



Speedwell Close

Melksham SN12 7TE

- Three bedrooms
- Kitchen/diner for family meals
- Garage and parking available
- Close to local schools
- Modern semi-detached house
- Downstairs toilet
- Walking distance to town centre
- Ideal for families

£289,000 Freehold





Hall

External door to front, radiator, stairs to first floor and doors to living room and WC.

Living Room

Window to front elevation, under stairs storage, radiator and double doors to kitchen/diner.

Kitchen/Diner

10'0" x 14'10"

Fitted with a matching range of base and eye level units with worktop space over, 1+1/2 bowl stainless steel sink, integrated dishwasher, space for fridge/freezer and washing machine, built-in eye level electric fan assisted oven, built-in four ring gas hob with extractor hood over, built-in microwave, window to rear elevation, radiator and sliding door to garden.

WC

Window to front elevation, fitted with two piece suite comprising wash hand basin and WC with radiator.



Landing

Window to side elevation, radiator and doors to bedrooms and bathroom.

Bedroom One

Window to front elevation, radiator and fitted wardrobes.

Bedroom Two

Window to rear elevation, radiator and fitted wardrobes.

Bedroom Three

Window to front elevation, radiator and over stairs storage.

Bathroom

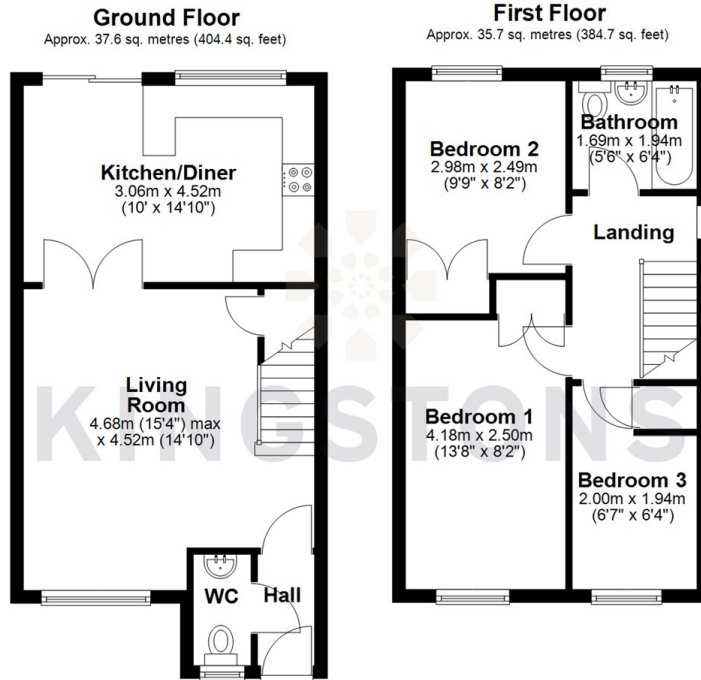
Fitted with three piece suite comprising bath with shower over and glass screen, wash hand basin and low-level WC, window to rear elevation and radiator.

Outside

Enclosed rear garden, garage with driveway parking in front and workshop built behind.



Local Authority **Wiltshire**
Council Tax Band **C**
EPC Rating **D**



Total area: approx. 73.3 sq. metres (789.1 sq. feet)




KINGSTONS
Melksham Office

11 High Street, Melksham,
Wiltshire, SN12 6JR

Contact

01225709115
sales@kingstons.biz
www.kingstons.biz

Agents Note: Whilst every care has been taken to prepare these particulars, they are for guidance purposes only. All measurements are approximate and for general guidance purposes only and whilst every care has been taken to ensure accuracy, they should not be relied upon and potential buyers/tenants are advised to recheck the measurements.