

Property ref: 145348

## Joseph Huntley Walk, Reading, RG1 3NP

**£2,000 PCM**

**HASLAM'S**  
Lettings



A modern, two double bedroom second floor apartment located in Reading town centre, built by Berkeley Homes. Reading Borough Council- Tax Band D. £75 Sundry for Hot Water and Heating. Broadband/Mobile Info: Connections available. For an indication of specific speeds and supply of Broadband and Mobile, we advise applicants go to the Ofcom website Broadband and Mobile Coverage Checker.

### Available Now

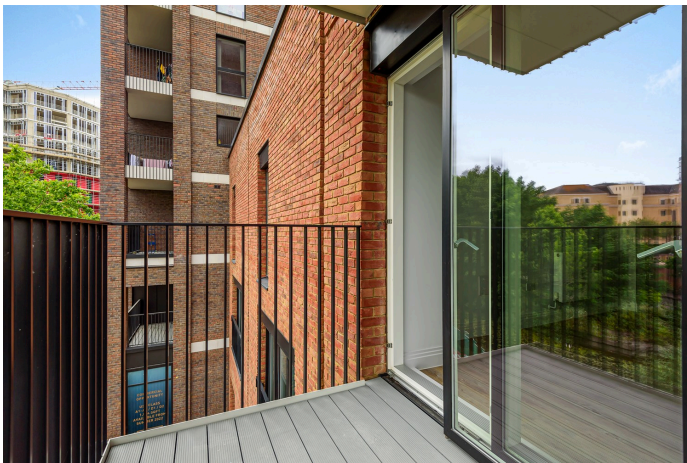
- Two double bedrooms; Master with en suite
- Family bathroom with shower over the bath
- Fully fitted kitchen with appliances
- EPC rating B; Unfurnished
- Private balcony; Communal Boiler
- No parking; Managed by HASLAM'S

\*Fees For Assured Periodic Tenancies: when you rent a property from us you will be required to pay a sum equivalent to one weeks' rent for a holding deposit. Upon successful application, this amount will be off set against your first months' rent. You will also be required to pay a security deposit equivalent to 5 weeks' rent which will be held and protected in line with Deposit legislation. For more information about our fees please visit: [www.haslams.net](http://www.haslams.net)  
Fees for all other tenancies (Non Housing Act Tenancies / Company Lets): when you rent a property from us we will charge you a one-off fee per property. This charge is the equivalent of 15 days of the monthly rental charge (+VAT) with a minimum fee of £450 (inc.VAT) up to a maximum of £650 (inc.VAT). Other fees may apply depending on your circumstances.

**0118 960 1055**

**[lettings@haslams.net](mailto:lettings@haslams.net) [www.haslams.net](http://www.haslams.net)**

**Haslams Estate Agents Ltd, 159 Friar Street, Reading, Berkshire, RG1 1HE**

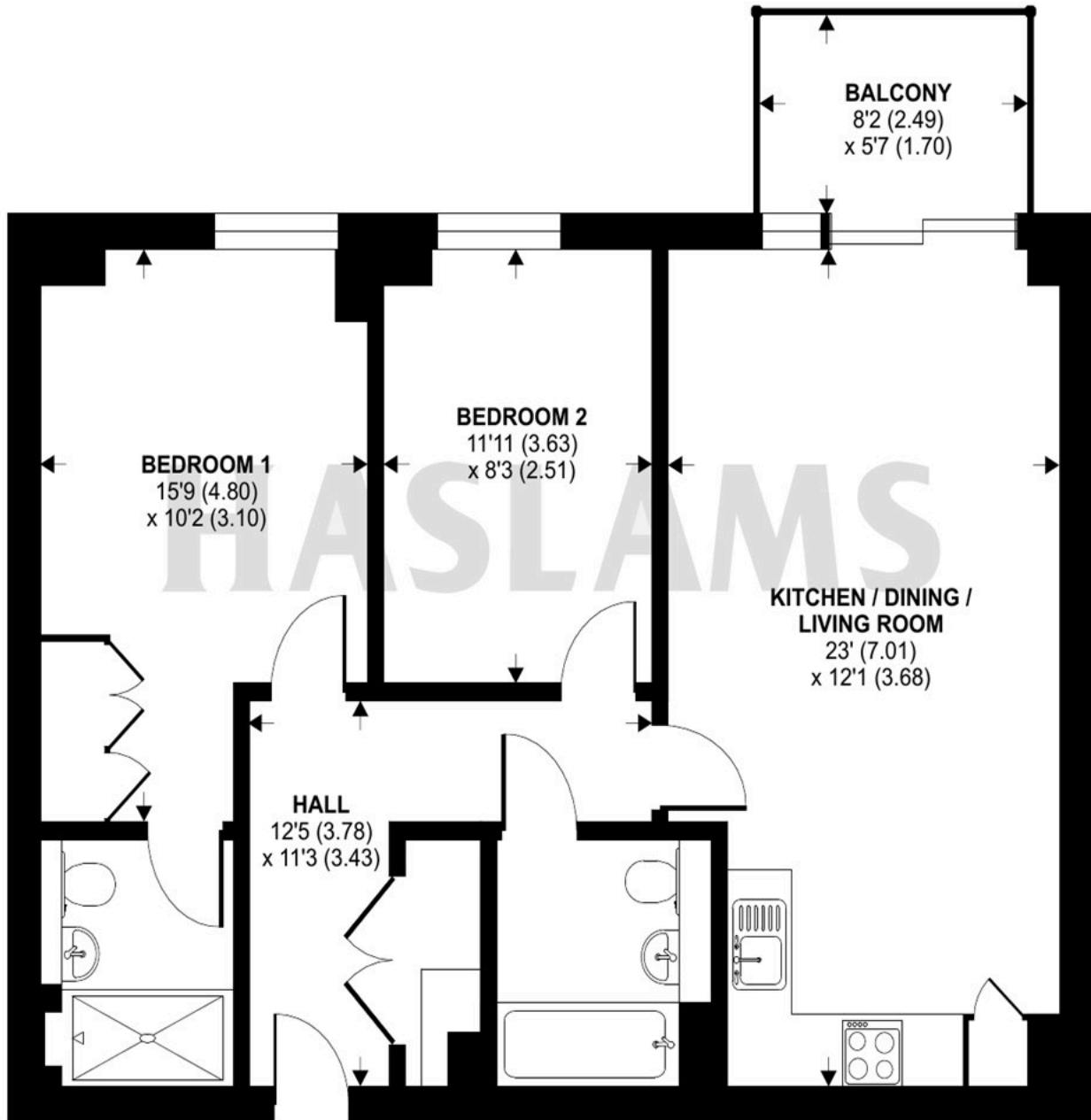




# Joseph Huntley Walk, Reading, RG1

Approximate Area = 722 sq ft / 67.1 sq m

For identification only - Not to scale



## SECOND FLOOR



Floor plan produced in accordance with RICS Property Measurement Standards incorporating International Property Measurement Standards (IPMS2 Residential). © n|cheom 2022. Produced for Haslam's. REF: 870271