



Harrow Road, Deeping St. Nicholas Spalding
£235,950 OIEO Freehold

**Sharman
Quinney**

Key Features



- Semi Detached Home
- Three Bedrooms
- Two Reception Rooms
- Downstairs Shower Room
- Private Rear Garden

Accommodation Includes

Front door to:

Entrance Hall

Radiator, understairs storage space, stairs to first floor and landing.

Kitchen

6.07m x 2.82m (19'11" x 9'3"). Range of base and eye level units with worktops over, Belfast sink with mixer tap, built in electric oven, hob and extractor, radiator, space for fridge freezer.

Utility Room

2.54m x 1.63m (8'4" x 5'4"). Fitted with a range of base units with worktop space, sink with mixer tap, space for fridge freezer.



Dining Area

4.62m x 4.17m (15'2" x 13'8"). Radiator, door to side, French doors to rear garden.

Downstairs Shower Room

Fitted with a three piece suite comprising walk in shower cubicle, wash hand basin with cupboards below, close coupled wc, heated towel rail.

Lounge

4.37m x 3.51m max (14'4" x 11'6" max). Window to front, radiator.

Family Room

3.28m x 3.05m (10'9" x 10'). Window to front, radiator.

Stairs to first floor and landing

Radiator, storage cupboard, loft access.

Family Bathroom

Window to rear, radiator, wc, vanity wash hand basin, panel bath with mixer tap shower.

Bedroom One

3.51m x 3.38m (11'6" x 11'1"). Window to front, radiator, built in wardrobe.

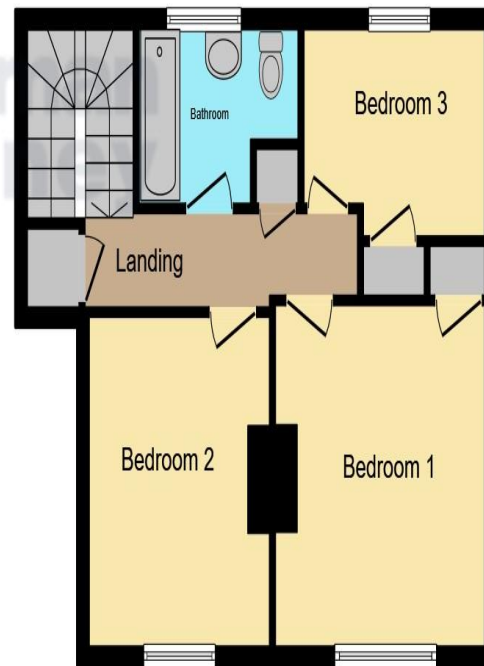
Bedroom Two

3.28m x 3.05m (10'9" x 10'). Window to front, radiator.





Ground Floor



First Floor

Bedroom Three
3.15m x 2.16m (10'4" x 7'1"). Window to rear, radiator, built in wardrobe.

Outside
The low maintenance front garden is laid mainly to gravel providing ample parking space with side gate access leading to a private enclosed rear garden offering views over open fields, and laid mainly to lawn with raised decking area.

This floor plan is for illustrative purposes only. It is not drawn to scale. Any measurements, floor areas (including any total floor area), openings and orientation are approximate. No details are guaranteed, they cannot be relied upon for any purpose and they do not form part of any agreement. No liability is taken for any error, omission or misstatement. A party must rely upon its own inspection(s). Powered by www.focalagent.com

To view this property call Sharman Quinney on:
01778 343322

Selling your property?

Contact us to arrange a **FREE**
home valuation.

 01778 343322

 25 Market Place, Market Deeping,
PETERBOROUGH, Cambridgeshire, PE6 8EA

 marketdeeping@sharmanquinney.co.uk

 www.sharmanquinney.co.uk



 SCAN ME



Sharman Quinney Holdings Limited is registered in England and Wales under company number 4174227, Registered Office is Cumbria House, 16-20 Hockliffe Street, Leighton Buzzard, Bedfordshire, LU7 1GN. VAT Registration Number is 500 2481 05.

1: These particulars do not constitute part or all of an offer or contract. 2: The measurements indicated are supplied for guidance only and as such must be considered incorrect. 3: Potential buyers are advised to recheck the measurements before committing to any expense. 4: Sharman Quinney has not tested any apparatus, equipment, fixtures, fittings or services and it is the buyers interests to check the working condition of any appliances. 5: Sharman Quinney has not sought to verify the legal title of the property and buyers must obtain verification from their legal representative. 6: Intending purchasers will be asked to produce identification documentation at a later stage and we would ask your co-operation in order that there will be no delay in agreeing the sale. Ref: MRD204039 - 0005

