



Overlinks Drive

Salford

HILLS

In Excess of £260,000

Overlinks Drive

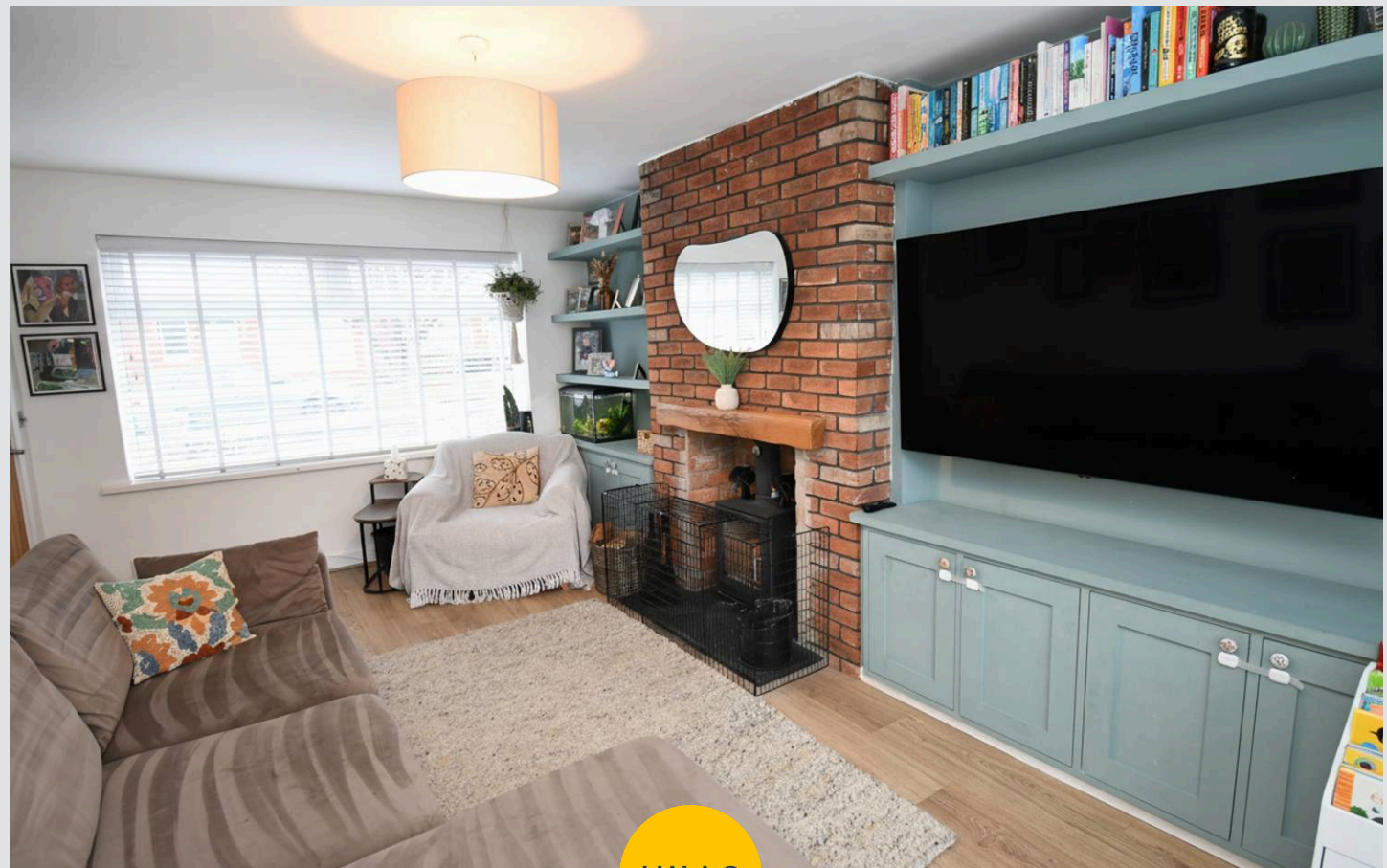
Salford

Beautifully presented, extended three bedroom semi-detached property, featuring a driveway to the front and a fantastic low maintenance rear garden!

Council Tax band: B

Tenure: Freehold

- Stunning three bedroom extended semi-detached property
- Situated in a Popular Location Close to Several Well-Kept Parks and Local Schooling
- Spacious lounge
- Contemporary fitted extended kitchen
- Three generous sized bedrooms
- Modern bathroom suite
- Driveway to the front for Off-Road Parking
- Beautifully presented low maintenance rear garden
- Within Easy Access of Salford Royal Hospital
- Viewing is Highly Recommended!



HILLS



Lounge

18' 11" x 10' 11" (5.76m x 3.34m)

Kitchen / Diner

25' 2" x 7' 8" (7.68m x 2.34m)

Landing**Bedroom One**

10' 11" x 9' 5" (3.34m x 2.86m)

Bedroom Two

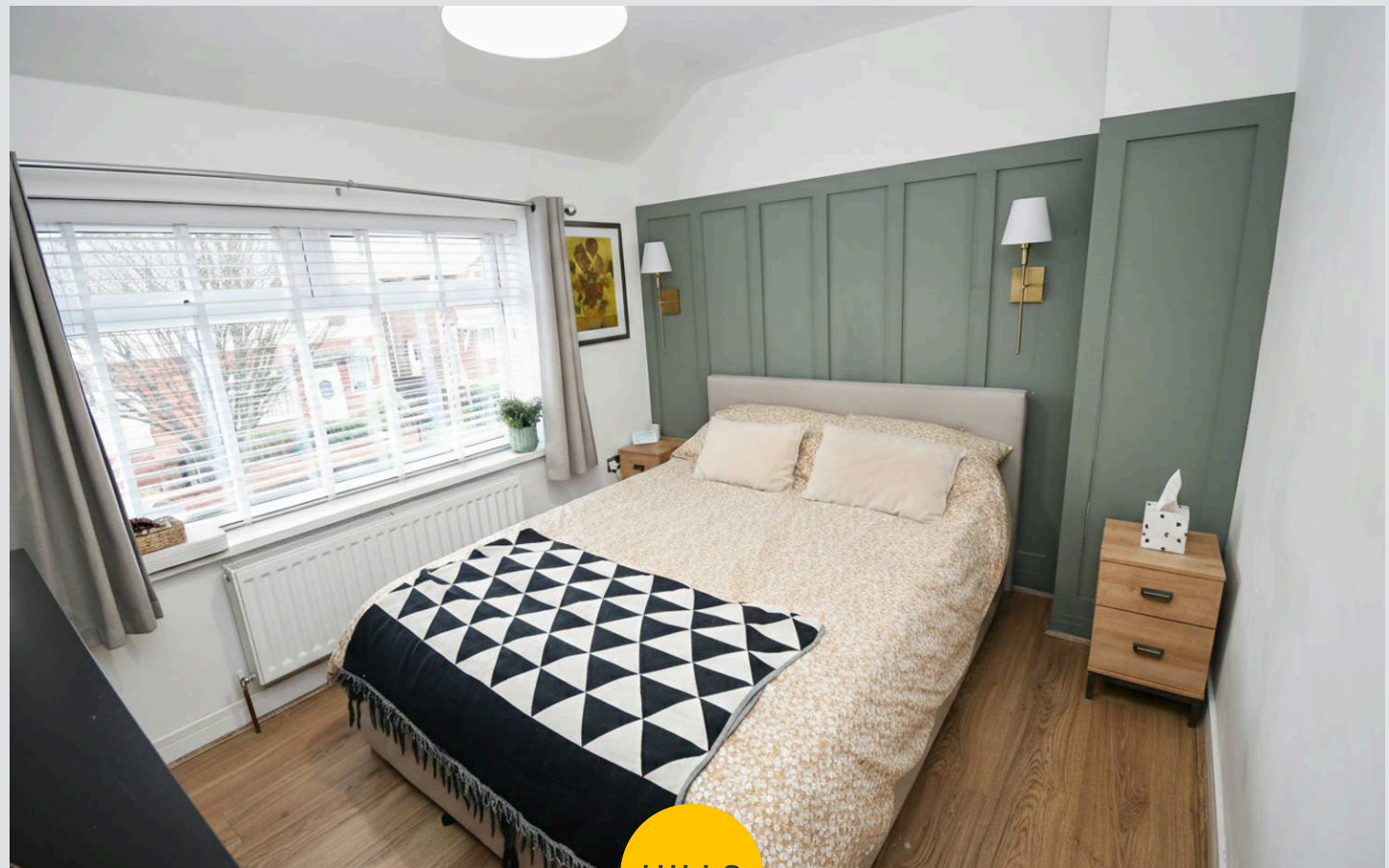
11' 1" x 7' 11" (3.38m x 2.41m)

Bedroom Three

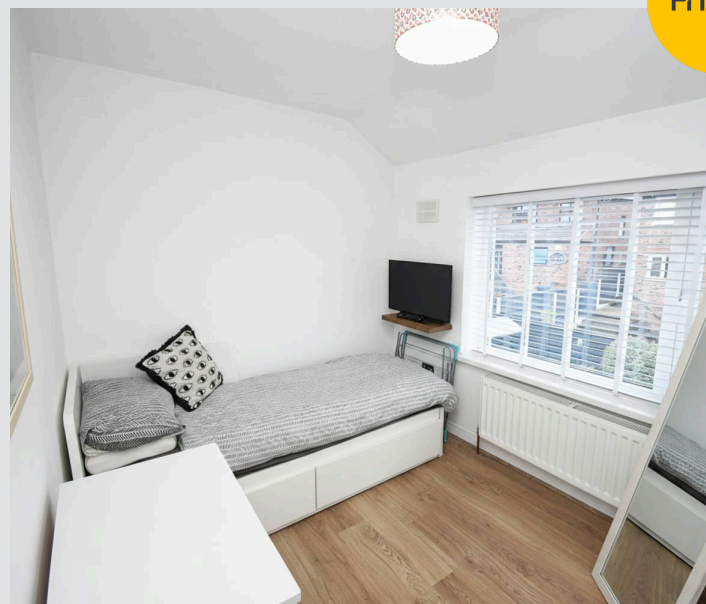
7' 10" x 7' 9" (2.40m x 2.36m)

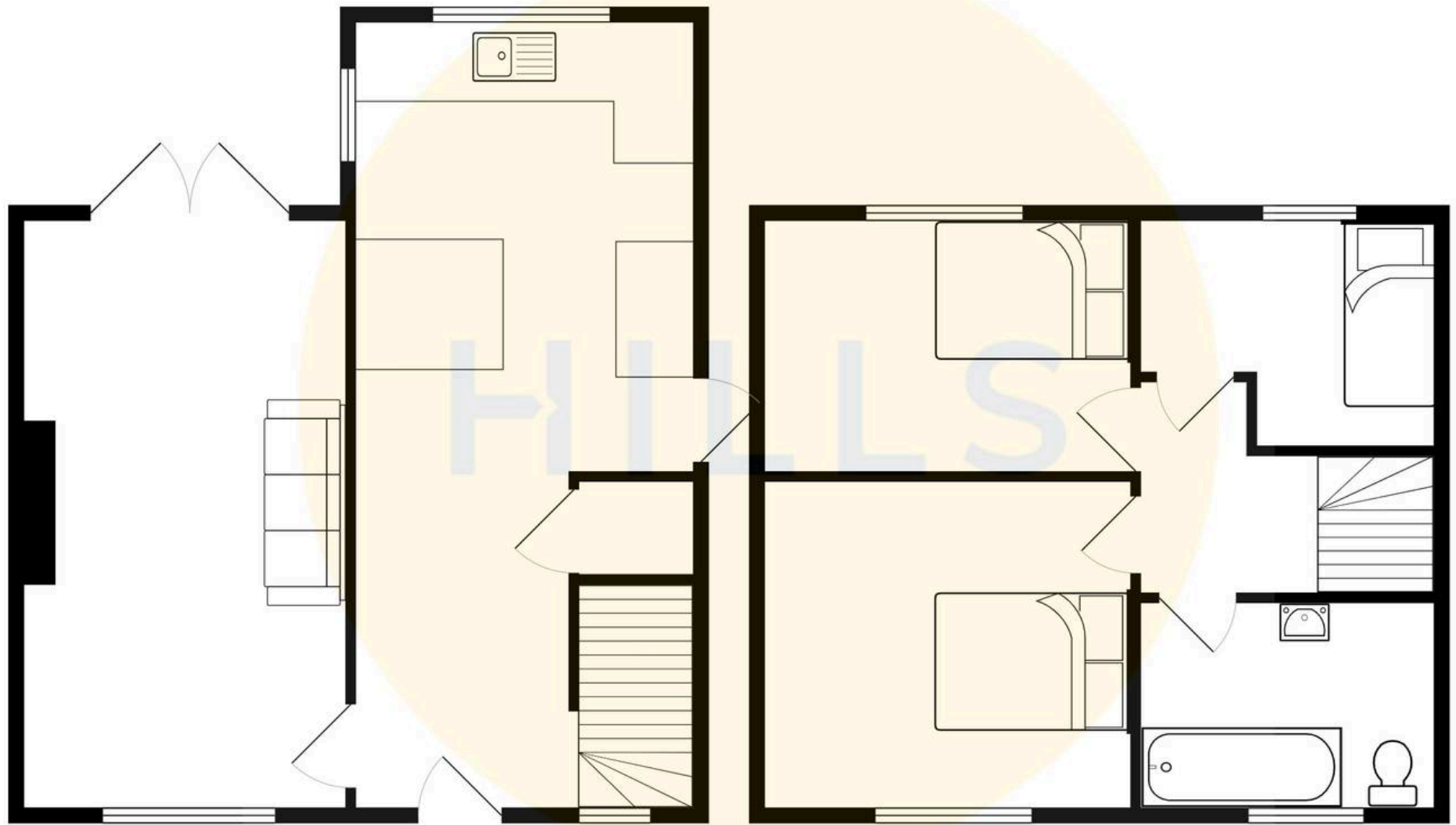
Bathroom

7' 7" x 5' 11" (2.31m x 1.81m)



HILLS







Hills | Salfords Estate Agent

Hills Residential, Sentinel House Albert Street – M30 0SS

0161 707 4900

sales@hills.agency

www.hills.agency/



By law, we are required to conduct anti-money laundering checks on all potential buyers and sellers. In line with HMRC guidelines, our trusted partner, Coadjute, will securely manage these checks on our behalf. A non-refundable fee of £45 + VAT per person will apply, and Coadjute will handle the payment. Once an offer is accepted, Coadjute will send a secure link for you to complete the biometric checks. These checks must be completed before we can send the memorandum of sale to all parties. PLEASE NOTE: The Agent has not tested any equipment, fixtures, fittings or services so cannot verify that they are in working order or fit for the purpose. References to the properties tenure are based on information supplied by the seller. You are advised to check the availability of this property before travelling any distance to view. Every effort has been made to ensure these particulars are correct and not misleading but their accuracy is not guaranteed nor do they form part of any contract.