



Beta Road
Farnborough, GU14 8PQ

£460,000 Offers In Excess Of

Property Details

-  3 bedrooms
-  Modern refitted shower
-  EPC Rating TBC
-  1300 sq foot
-  Farnborough mainline 0.8 miles
 - Modern semi detached bungalow
 - Living room and Dining room
 - Kitchen breakfast room
 - Modern refitted shower room
 - New driveway
 - Large garden room/office
 - Attractive landscaped rear garden
 - Conveniently located for shops and amenities

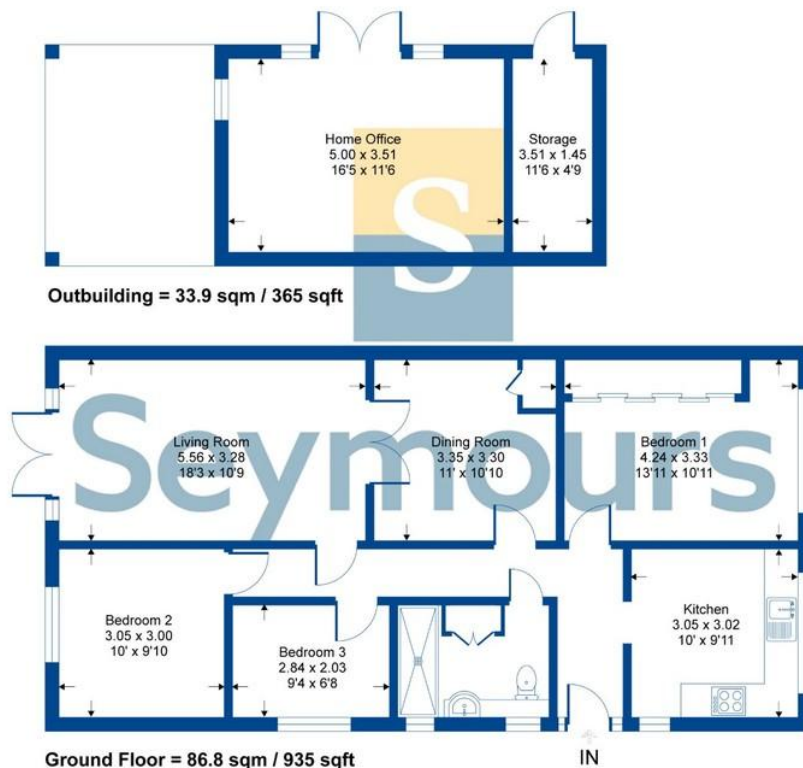
This very well presented and modernised three bedroom bungalow also has the benefit of a new driveway with parking for several cars. There is the addition of a large office/garden room too. The actual bungalow incorporates a kitchen breakfast room as well as a spacious living room with access out onto the attractive patio and garden. There is also a dining area and a modern refitted shower room as well as three bedrooms. The property is ideally placed for local shops and amenities as well as Farnborough mainline station being under a mile away.



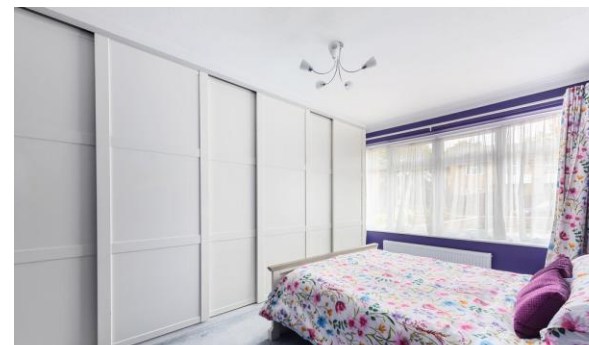
Property Details

Beta Road

Approximate Gross Internal Area = 86.8 sq m / 935 sq ft
 Approximate Outbuilding Internal Area = 33.9 sq m / 365 sq ft
 Approximate Total Internal Area = 120.7 sq m / 1300 sq ft



Whilst every attempt has been made to ensure the accuracy of the floor plan contained here, measurements of doors, windows, rooms and any other items are approximate and no responsibility is taken for any error, omission or mis-statement. This plan is for illustrative purposes only and should be used as such by any prospective purchaser.



Seymours Blackwater Office 6 Kings Parade, 34 London Road, Blackwater, Camberley, Surrey, GU17 9AA
 01276 534100 / james@seymours-blackwater.co.uk / seymours-estates.co.uk

The information contained in these Sales Particulars does not form part of any contract neither is any warranty given or implied by Seymours or their clients as to the accuracy of measurements of details stated. Every effort is made to ensure that our Sales Particulars are correct and reliable. We do not test service, systems and appliances and we are unable to verify they are in working order.