



## Manoel Road, TW2

£675,000

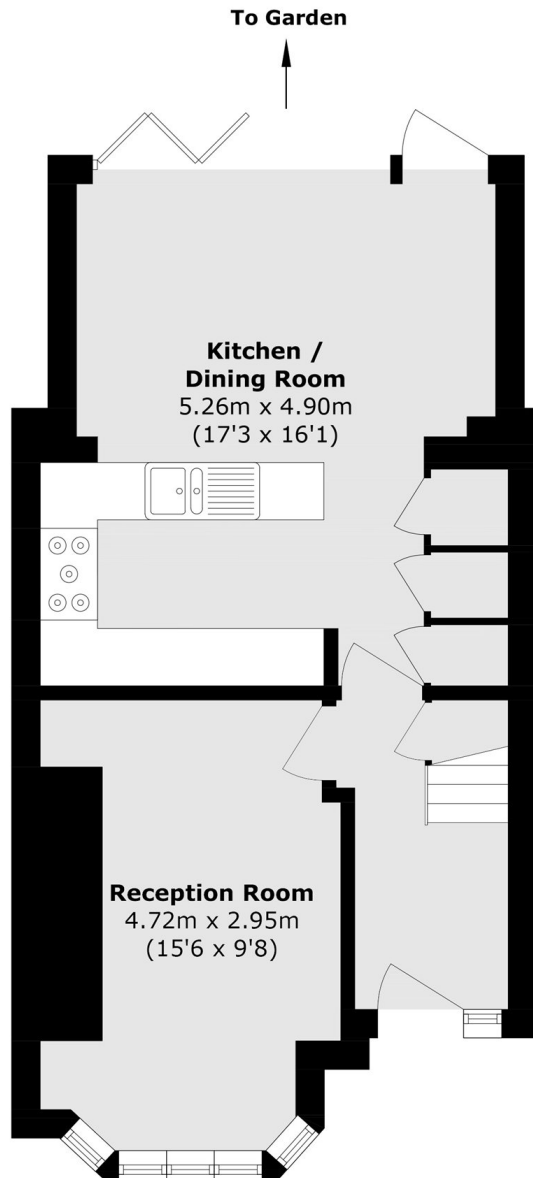
A fantastic opportunity to acquire this 1930's house situated in a popular residential road just over a mile from Twickenham town centre. With potential to extend STPP, and presented beautifully throughout this property is not to be missed.

Manoel Road is a popular residential road located off Staines Road with Twickenham town centre just over a mile away. There are many great transport links which will take you into Richmond, Kingston and Teddington town centres and the A316 with its links to the M3, M4 & M25 is also easily accessible. Fulwell mainline station with its trains into London Waterloo is just 0.6 miles away.

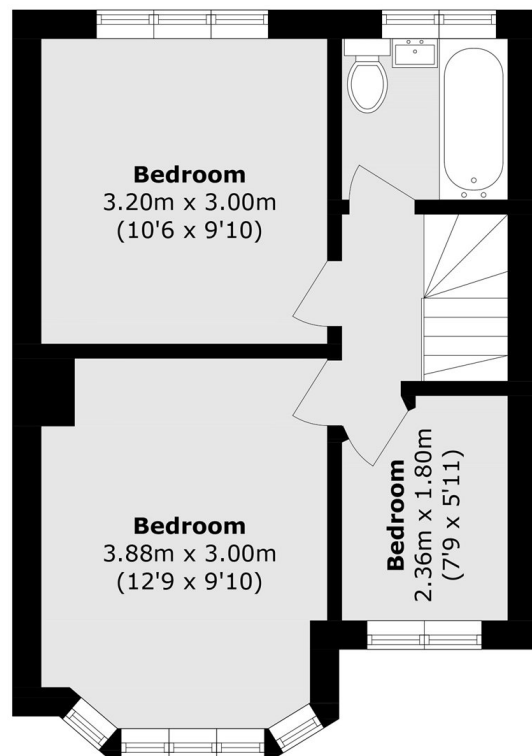
### Features

1930's Mid Terrace House  
Potential To Extend STPP  
Three Bedrooms  
Fantastic Location  
Presented Beautifully  
Summer House In Garden

# Manoel Road, Twickenham, TW2



**Ground Floor**



**First Floor**

Total area (approx.): 77.5 sq. m (834.2 sq. ft)