

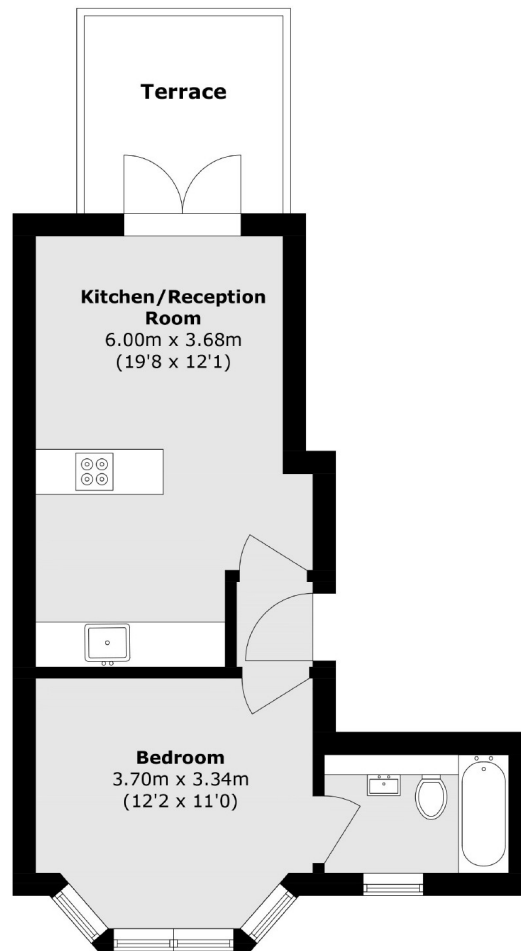


Lynton Road, W3

£375,000

A newly converted one bedroom period conversion apartment. Forming part of this imposing semi-detached property this first floor flat has been finished to the highest standard throughout, has a private terrace and is offered with no onward chain.

Lynton Road is moments from the Elizabeth line station, Acton Main Line and within half a mile of the shops and amenities of Churchfield Road.



Robertson Smith & Kempson Acton Sales
137 High Street, Acton,
London, W3 6LY
020 8896 3996
actonsales@robertsonsmithandkempson.co.uk

Energy Rating: C. We aim to make our particulars both accurate and reliable. However they are not guaranteed; nor do they form part of an offer or contract. If you require clarification on any points then please contact us, especially if you're traveling some distance to view. Please note that appliances and heating systems have not been tested and therefore no warranties can be given as to their good working order.