

**19 Barry Road, Pontypridd, CF37 1HY**  
**£850 Per Calendar Month**

**\*\* Move in Straight Away \*\* Newly Fitted Kitchen & Shower Room \*\* Three Bedrooms \*\***

Internal viewing is strongly recommended on this well presented and improved house, located on Barry Road in the popular area of Pwllgwaun.

Conveniently located for amenities, shops, schools, town centre and transport links.

Comprising entrance hall, lounge/diner, contemporary kitchen with oven & hob, utility space, newly fitted shower room and three bedrooms.

There is a rear garden with lane access together with new flooring and fresh, neutral decor throughout.

Available now. Unfurnished.

## Entrance Hall

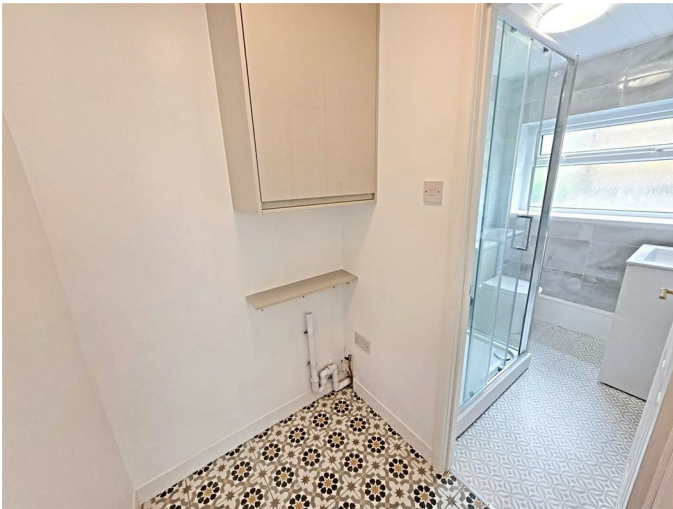
Lounge/Diner 22'1" x 11'11" (6.75 x 3.65)



Kitchen 11'0" x 6'2" (3.37 x 1.90)



## Utility Space

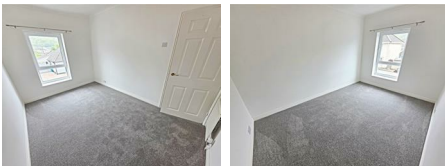


## Shower Room



## First Floor Landing

Bedroom 1 12'7" x 8'6" (3.86 x 2.61)



Bedroom 2 9'2" x 8'11" (2.80 x 2.73)



Bedroom 3 9'4" x 6'3" (2.87 x 1.92)



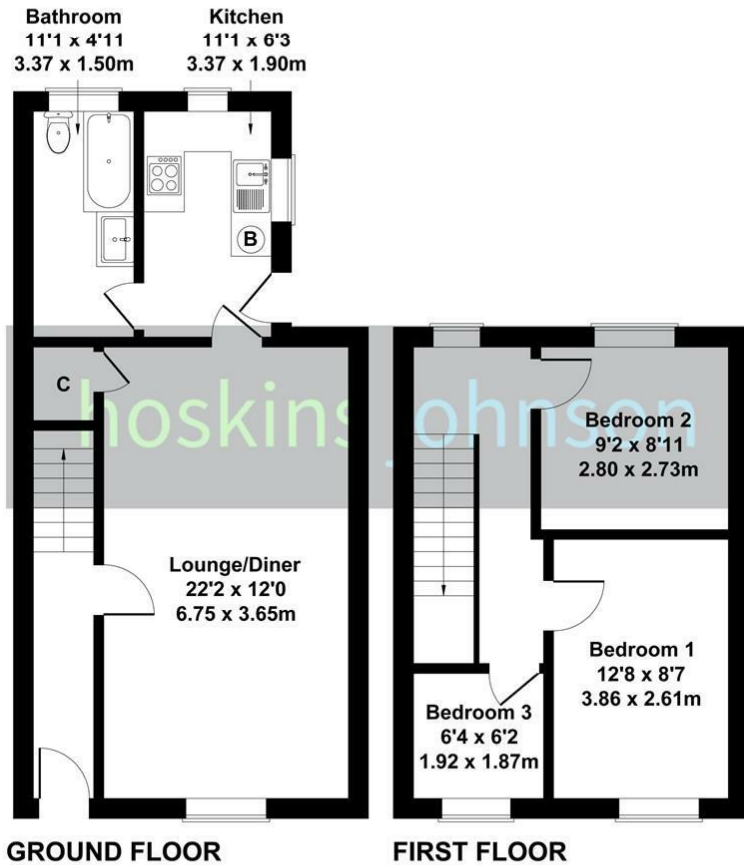
## Outside



Floor Plan

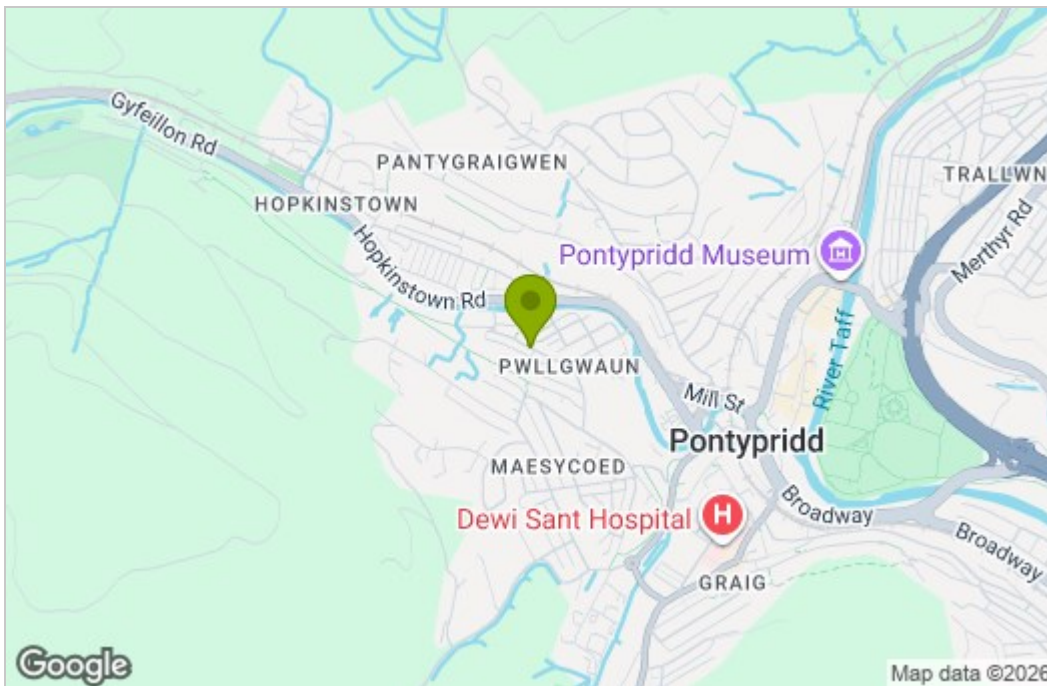
# 19 Barry Road, Pwllgwaun

Approximate Gross Internal Area  
818 sq ft - 76 sq m

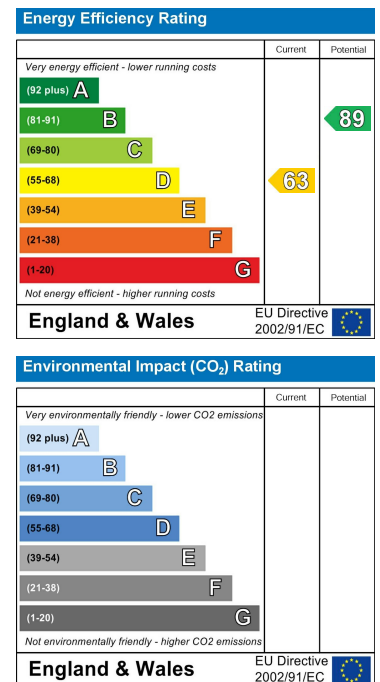


Not to Scale. Produced by The Plan Portal 2025  
For Illustrative Purposes Only.

Area Map



Energy Efficiency Graph



These particulars, whilst believed to be accurate are set out as a general outline only for guidance and do not constitute any part of an offer or contract. Intending purchasers should not rely on them as statements of representation of fact, but must satisfy themselves by inspection or otherwise as to their accuracy. No person in this firm's employment has the authority to make or give any representation or warranty in respect of the property.