



Queensland Road, N7

£300,000

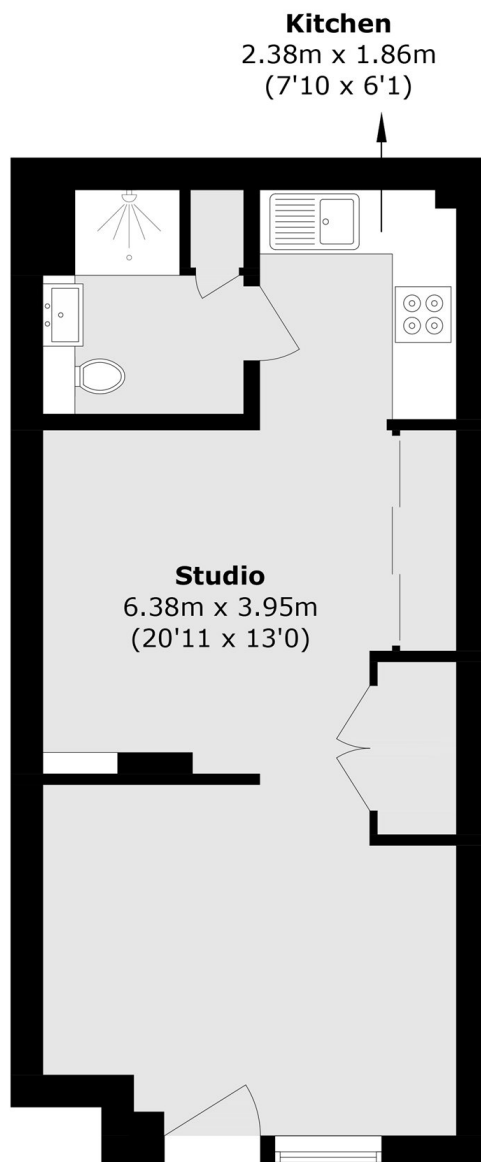
A spacious and well proportioned studio flat located within a modern development. This property benefit from it's own private entrance, modern appliances, and 24 hour concierge.

Queensland Road is ideally located for transport, with Holloway Road (Piccadilly Line) and Drayton Park (Overground) both within easy walking distance and allowing for access to both Kings Cross and The City. For green space Highbury Fields is less than a half mile away.

Features

- Stuido Flat
- Private Entrance
- Modern Development
- 24hr Concierge
- Gym
- Chain Free

Queensland Road, London, N7



Total area (approx.): 34.4 sq. m (370.2 sq. ft)