



Guide Price
£435,000

Freehold

5x  2x  2x 

**Oakvale Close, Elms
Vale, Dover, Kent, CT17**

Wards
Helping you move forwards



Main features

- Extended family home in Elms Vale
- Quiet cul-de-sac in sought after area
- Driveway parking for 3 cars
- Close to Dover Priory railway station with high speed links to London
- Close to a selection of schools and Dover town

Accommodation

GROUND FLOOR

- Entrance Hallway
- Lounge : 19'7 x 12'11 (5.97m x 3.94m)
- Dining Room: 10'6 x 10'1 (3.20m x 3.08m)
- Breakfast Area : 14'7 x 10'4 (4.45m x 3.15m)
- Kitchen : 10'6 x 10'3 (3.20m x 3.13m)
- Utility Room : 10'2 x 5'8 (3.10m x 1.73m)
- Conservatory : 12'11 x 9'4 (3.94m x 2.85m)

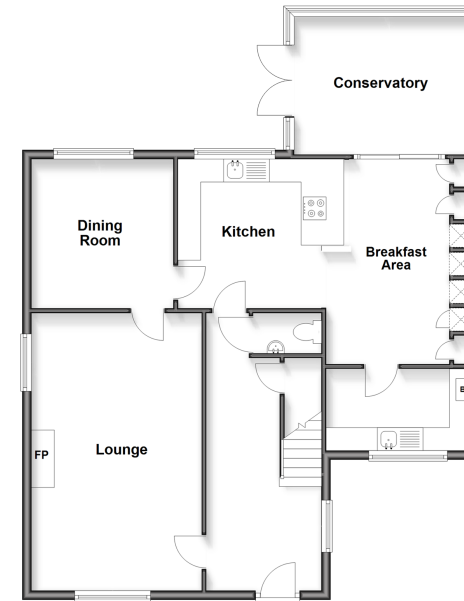
FIRST FLOOR

- Landing
- Bedroom 1 : 15'8 x 10'1 (4.78m x 3.08m)
- En-Suite Shower Room : 10'2 x 4'7 (3.10m x 1.40m)
- Bedroom 2 : 10'4 x 10'3 (3.15m x 3.13m)
- Bedroom 3 : 11'7 x 10'2 (3.53m x 3.10m)
- Bedroom 4 : 10'7 x 10'4 (3.23m x 3.15m)
- Bedroom 5 : 8'8 x 8'3 (2.64m x 2.52m)
- Bathroom: 7'7 x 5'7 (2.31m x 1.70m)

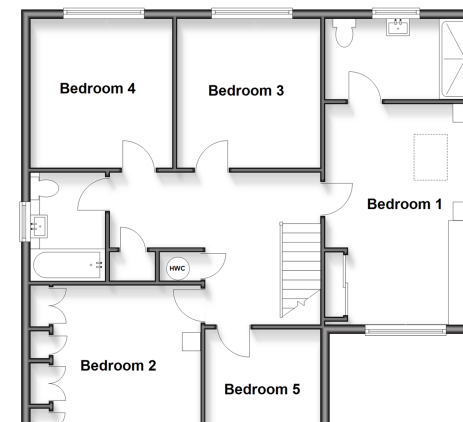
OUTSIDE

- Front Garden
- Rear Garden
- Driveway Parking To The Front

Ground Floor
Approx. 82.7 sq. metres (897.5 sq. feet)



First Floor
Approx. 81.7 sq. metres (879.1 sq. feet)



Unable to display material information. Please check with the branch for material information details for this property



10734273/20260424/RW/OV