



Avalon Road, W13

£657 Per week

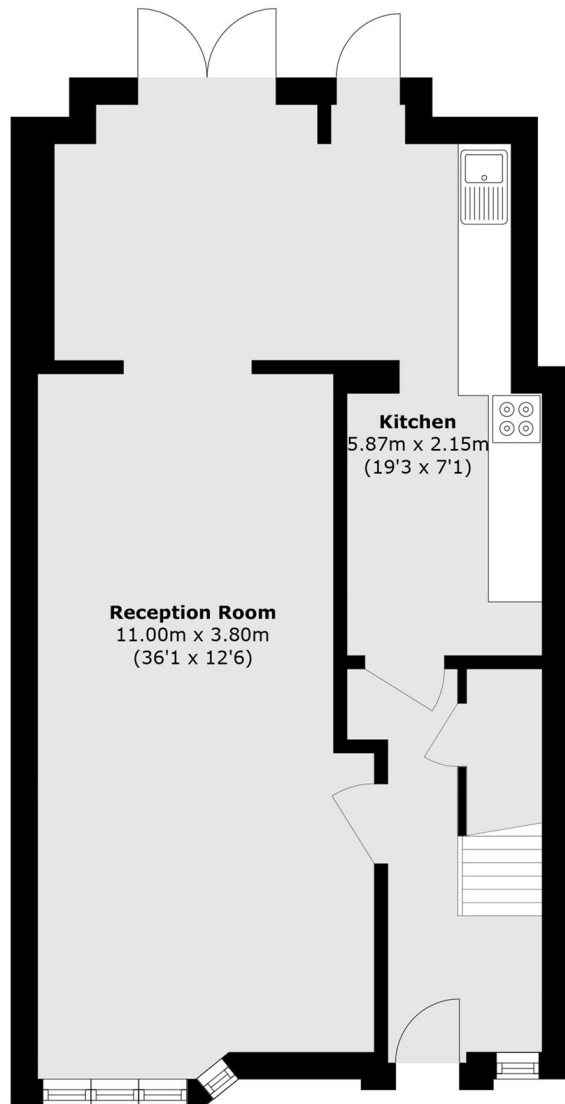
A spacious three bedroom house ideal for a family. The property offers plenty of living space with a double reception and a separate dining area leading to a large garden. The property has the added bonus of off street parking.

Located on a quiet residential road in the heart of West Ealing surrounded by local parks and schools. Also ideal for transport links into and out of London.

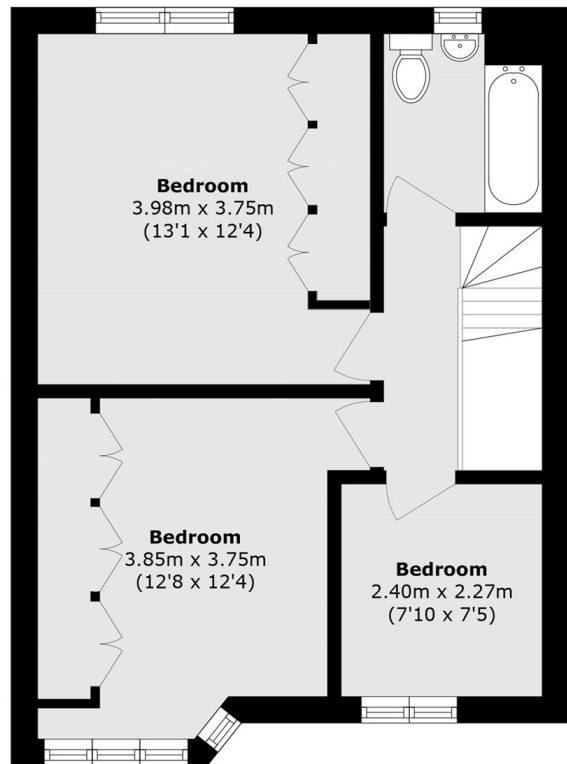
Features

- Three Bedroom House
- Modern Kitchen
- Private Garden
- Gas Central Heating
- Off Street Parking
- Close to Station

Avalon Road, London, W13



Ground Floor



First Floor

Total area (approx.): 102.6 sq. m (1104.3 sq. ft)