

Ashtons



329 The Residence Bishopthorpe Road YO23 1DQ

£1,100 Per Month

1



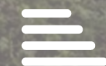
1



1



C

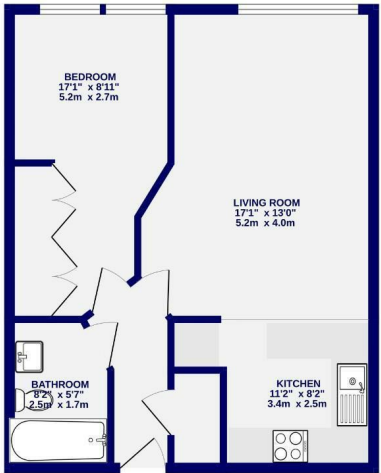


Located within the iconic building of Terry`s Chocolate Factory which has been sympathetically converted in to apartments is this third floor luxury one bedroom apartment. Located within walking distance of the City Centre but also the popular cafes and shops on Bishopthorpe Road, the apartment is offered for let on an unfurnished or part furnished basis. Accommodation comprises of entrance hall; open plan living kitchen equipped with electric oven, hob, integrated fridge, freezer, dishwasher, washer/dryer and microwave; double bedroom with fitted wardrobe; luxury fully tiled bathroom with shower over the bath. Large windows make this apartment light and airy.

The apartment has the added bonus of an allocated parking space, building concierge, lift access and bike storage.

Available Now / 6+ Month Tenancy / Deposit £1200 / Council Tax Band D / Unfurnished or Part Furnished

3RD FLOOR
506 sq.ft. (47.0 sq.m.) approx.



TOTAL FLOOR AREA: 506 sq ft (47.0 sq.m.) approx.
While every effort has been made to ensure the accuracy of the figures, measurements of rooms and any other items are approximate. It is intended to give the prospective tenant a general idea of the space.
The plan is not to scale and is for information only. It is not intended to be used as a basis for any legal proceedings. The actual layout and dimensions may vary slightly from the plan. The plan is for information only and is not intended to be used as a basis for any legal proceedings. The actual layout and dimensions may vary slightly from the plan. The plan is for information only and is not intended to be used as a basis for any legal proceedings. The actual layout and dimensions may vary slightly from the plan.

Ashtons
Ashtons Lettings



01904 731404



lettings@ashtonsnet.com

