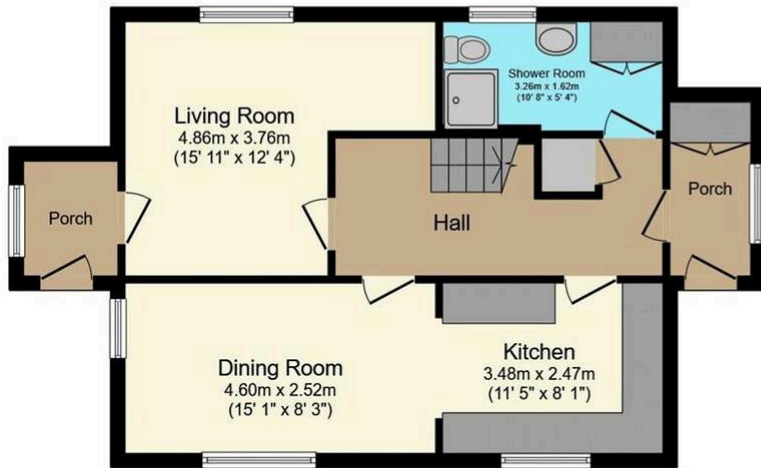




Hafod Lon, Cynwyd, LL21 0NE - £475,000

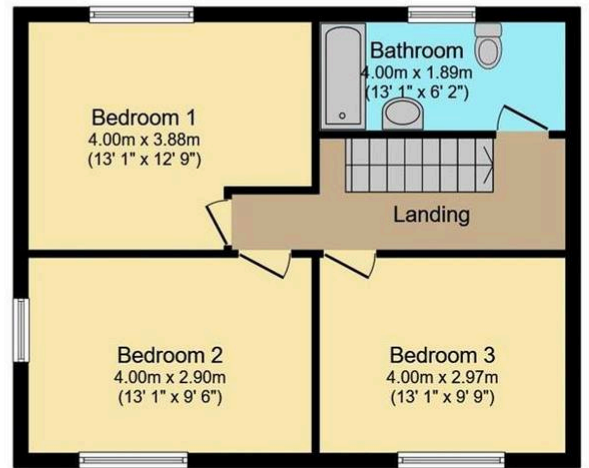
Tenure: Freehold | EPC: E41 | Council Tax: E

A unique and character filled property located just outside of Cynwyd, a mere 4 miles to Historic Corwen and 10 miles to Bala. Hafod Lon is a charming converted chapel situated in a peaceful rural setting and enjoying panoramic countryside views. This three double bedroom family home retains many beautiful original features. The accommodation briefly comprises living room, kitchen, dining room, reception hallway, entrance porch/utility room, downstairs shower room, rear vestibule, three double bedrooms and bathroom. Further benefits include an adjoining enclosed paddock, detached garage, immaculately kept garden, driveway providing off road parking for three vehicles and oil fired central heating.



Ground Floor

Floor area 65.1 sq.m. (701 sq.ft.) approx



First Floor

Floor area 50.8 sq.m. (547 sq.ft.) approx

Total floor area 115.9 sq.m. (1,248 sq.ft.) approx

This Floor Plan is for illustration purposes only and may not be representative of the property. The position and size of doors, windows and other features are approximate. Unauthorized reproduction prohibited. © PropertyBOX



YOUR FREE PROPERTY REPORT



WE OFFER FREE ADVICE

MORTGAGES - SURVEYS - SOLICITORS

