

Property ref: 179674

Tean House, Havergate Way, Reading, RG2 0GU

£1,350 PCM

HASLAM'S
Lettings



A very well presented, two bedroom second floor apartment, situated in the sought-after Kennet Island development. Within walking distance of Green Park, local amenities, bus routes into Reading town centre and with easy access to the M4 Motorway. Reading borough council tax band C. Please note, this building does not have a lift.

Reading Borough Council Tax Band B
No pets allowed - Leasehold restriction

Available 01/05/2026

- Two bedrooms; one double and one single
- Family bathroom with shower over bath
- Kitchen with integrated appliances
- Gas central heating; EPC rating C
- Private balcony; Allocated parking
- Furnished; managed by Landlord

*Fees For Assured Shorthold Tenancies: when you rent a property from us you will be required to pay a sum equivalent to one weeks' rent for a holding deposit. Upon successful application, this amount will be off set against your first months' rent. You will also be required to pay a security deposit equivalent to 5 weeks' rent which will be held and protected in line with Deposit legislation. For more information about our fees please visit: www.haslams.net
Fees for all other tenancies (Non Housing Act Tenancies / Company Lets): when you rent a property from us we will charge you a one-off fee per property. This charge is the equivalent of 15 days of the monthly rental charge (+VAT) with a minimum fee of £450 (inc.VAT) up to a maximum of £650 (inc.VAT). Other fees may apply depending on your circumstances.

0118 960 1055

lettings@haslams.net www.haslams.net

Haslams Estate Agents Ltd, 159 Friar Street, Reading, Berkshire, RG1 1HE

Water supply: Mains
Drainage info: Mains
Electricity supply: Mains
Gas supply: Mains
Broadband/Mobile Info: Connections available. For an indication of specific speeds and supply of Broadband and Mobile, we advise applicants go to the Ofcom website Broadband and Mobile Coverage Checker.

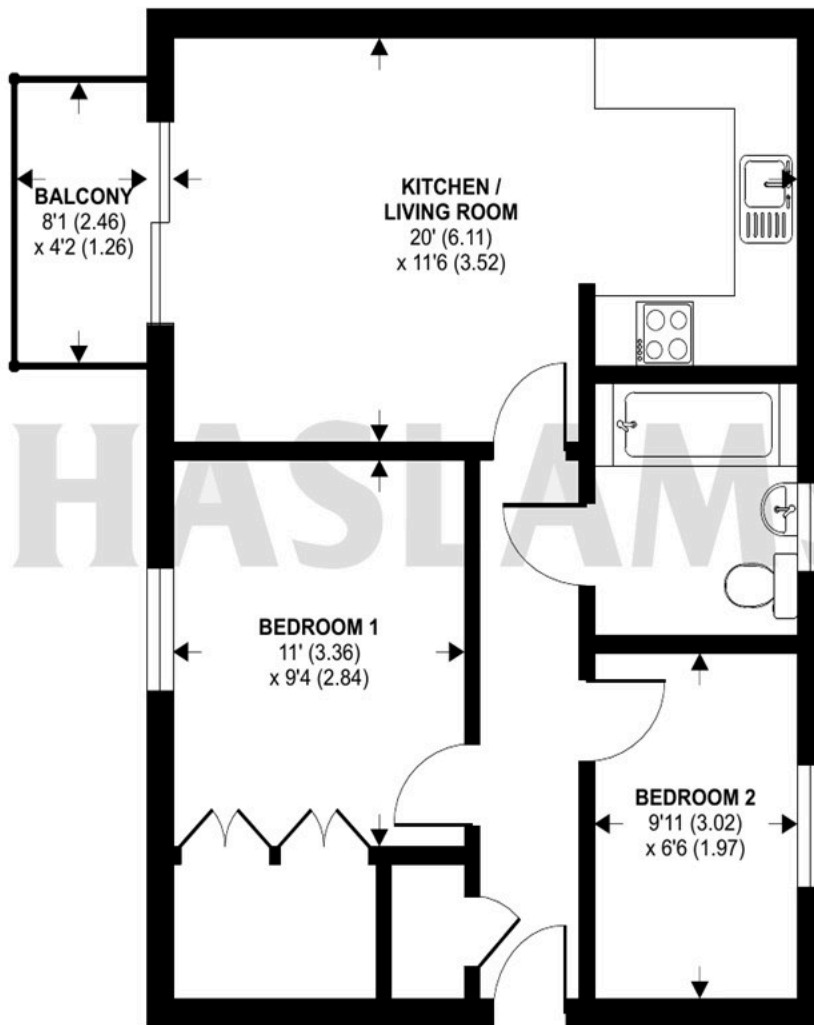




Tean House, Havergate Way, Reading, RG2

Approximate Area = 547 sq ft / 50.8 sq m

For identification only - Not to scale



 Floor plan produced in accordance with RICS Property Measurement 2nd Edition, Incorporating International Property Measurement Standards (IPMS2 Residential). © nchecon 2026. Produced for Haslams. REF: 1436106