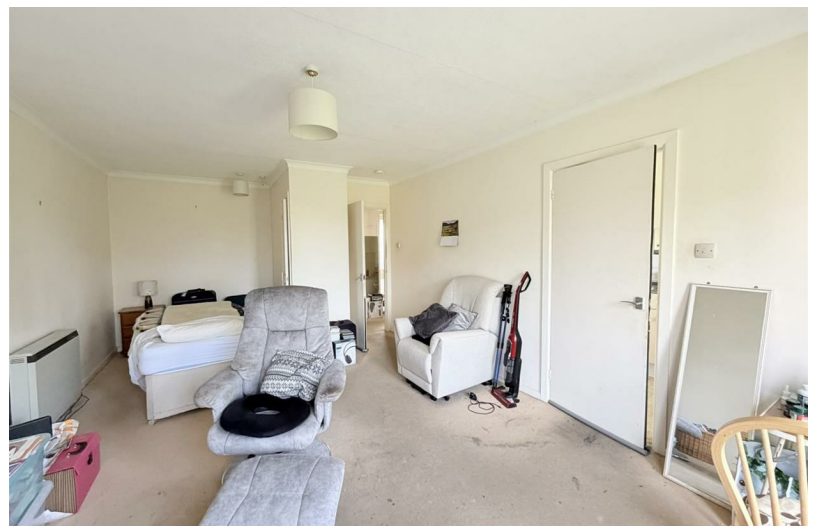


1  
BED

# Studio Flat Available, Close To Town!

17 Hamilton House, Belgrave Road, Seaford, BN25 2EL



Price £125,000

Share of Freehold

**phillipmann**  
we do more

[www.phillipmann.com](http://www.phillipmann.com)



## inbrief...

This first-floor studio flat is part of a purpose-built block situated in a favored location approximately half a mile from Seaford town centre and railway station. Local shops and bus routes are conveniently close by on Claremont Road.

The flat comprises a small entrance lobby, shower room, kitchen, and a studio room currently divided between sleeping and living areas with a balcony. Residents also benefit from a southerly aspect communal garden.

Lease: 999 years from 18th September 1970. Service charge to be confirmed Approx £1560 P/A

### Accommodation:

Communal Hallway: Staircase and lift to upper floors.

Entrance Lobby: Built-in storage cupboard housing electric meters, clothes rail, and shelves; additional built-in cupboard with hot and cold water tanks and slatted shelves; single-glazed window to the communal hallway.

Bathroom: Part-tiled with bath mixer shower taps, W/C and wash-hand basin.

Studio: Living area with double-glazed window to front and door to balcony; sleeping area with built-in wardrobe.

Kitchen: Double-glazed window to front; range of wall and base units; work surface with sink and drainer; four-ring electric hob with cooker hood above and oven below; space for fridge, freezer, and washing machine.

### Outside – Communal Gardens:

Extensive, well-maintained gardens surround Hamilton House, mostly laid to lawn with mature shrubs and trees.

There is a parking area, and the grounds are enclosed by an attractive flint wall boundary.



Council Tax Band: A

Energy Rating Level: C

moreinfo...

Phillip Mann Seaford Office

1-3 Dane Road, Seaford, East Sussex, BN25 1LG

01323 898666

To see more details on this & all our homes go to

[www.phillipmann.com](http://www.phillipmann.com)

