



## **Victoria Riverside, Dantzic Street, Manchester, M4 4DD**

**£347 Per Week**

VICTORIA RIVERSIDE A FLAGSHIP NEW DEVELOPMENT IN MANCHESTER M4

AMENITIES INC: CONCIERGE, GYM, CO-WORKING SPACES, RESIDENTS BAR AND LOUNGE PLUS COMMUNAL GARDENS

CLOSE TO VICTORIA STATION  
LOCATED NORTH OF THE CITY CENTER BETWEEN THE GREEN QUARTER & ANCOATS

Our 2 bedroom 2 bathroom apartment is located on the 12th floor.

COMES FURNISHED.

AVAILABLE FROM NOW

- VICTORIA RIVERSIDE M4
- LOCATED BETWEEN GREEN QUARTER & ANCOATS
- RESIDENTS BAR & LOUNGE
- AVAILABLE FROM NOW
- FLAGSHIP NEW DEVELOPMENT
- 2 BEDROOM 2 BATHROOM APARTMENT
- CLOSE TO VICTORIA STATION & CITY CENTER
- LOCATED NORTH OF THE CITY CENTER
- CONCIERGE, GYM, CO WORKING, COMMUNAL GDNS
- COMES FURNISHED

## Victoria Riverside, Dantzic Street, Manchester, M4 4DD



VICTORIA RIVERSIDE



BEDROOM



BATHROOM



BEDROOM



BEDROOM



BEDROOM



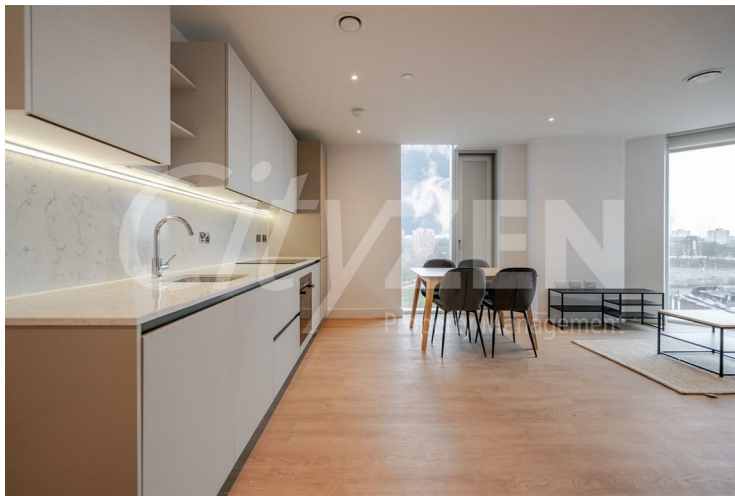
## Victoria Riverside, Dantzic Street, Manchester, M4 4DD



EN SUITE SHOWER ROOM



RECEPTION



KITCHEN



RECEPTION



KITCHEN



RECEPTION

## Victoria Riverside, Dantzic Street, Manchester, M4 4DD



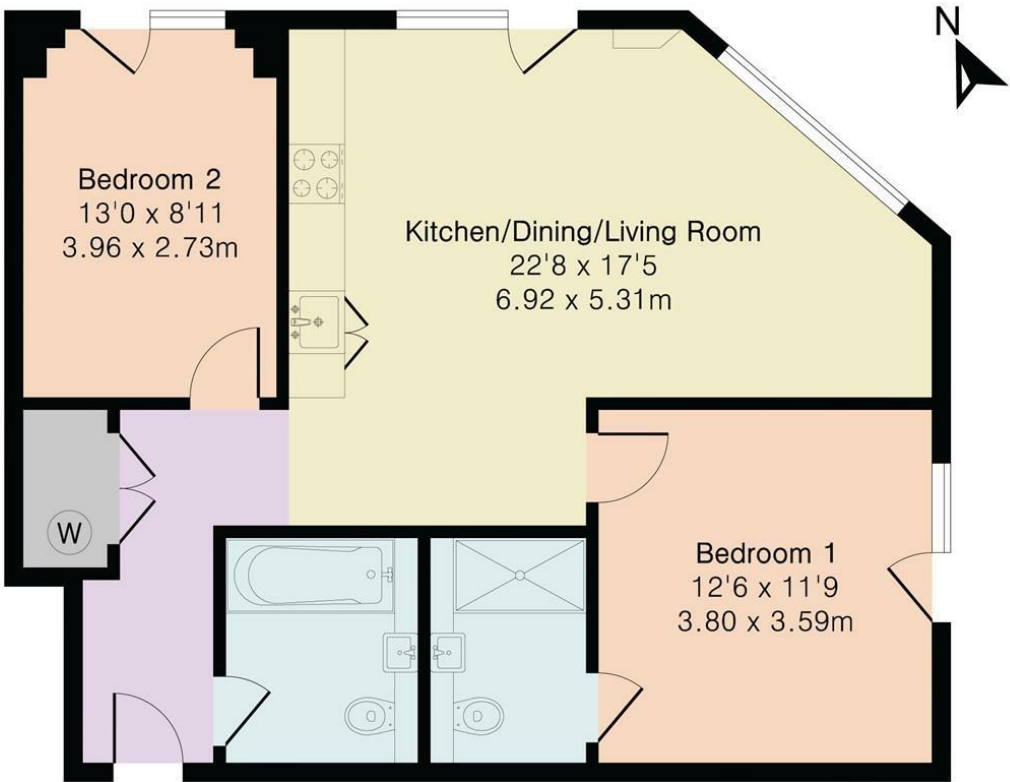
RECEPTION



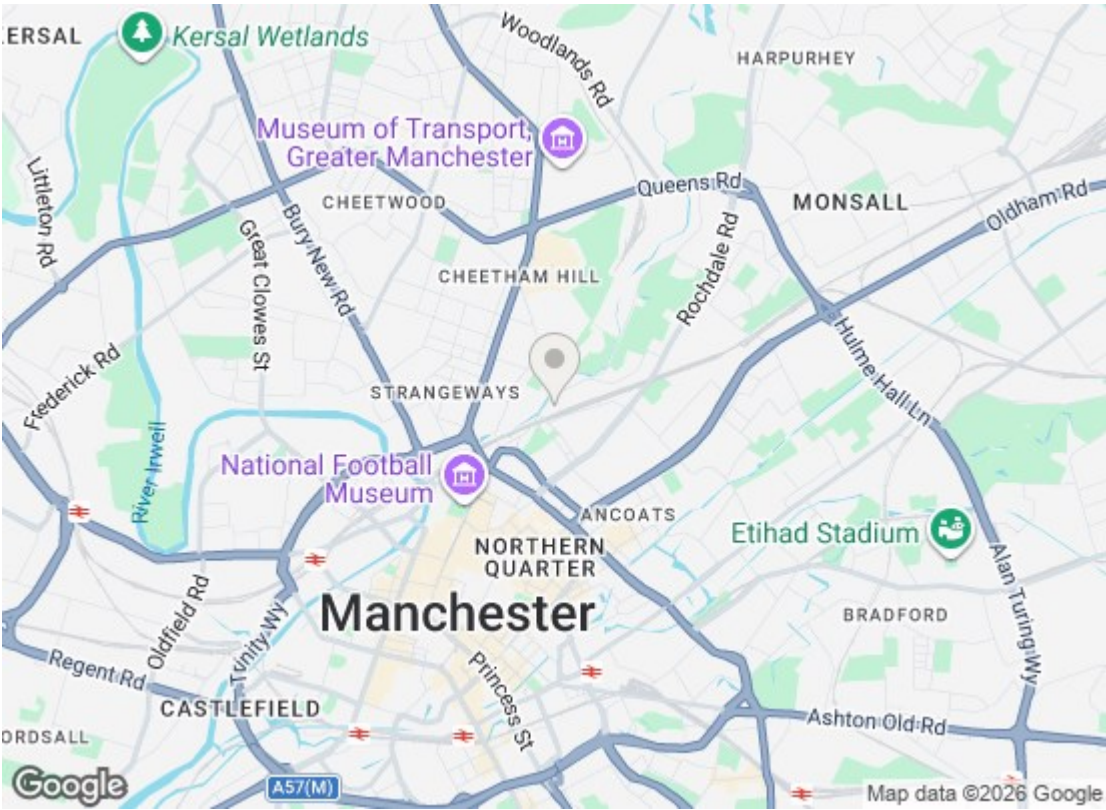
HALLWAY



Approximate Gross Internal Area 783 sq ft - 73 sq m



Twelfth Floor



Energy Efficiency Rating		
	Current	Potential
Very energy efficient - lower running costs		
(92 plus) A		
(81-91) B	83	83
(69-80) C		
(55-68) D		
(39-54) E		
(21-38) F		
(1-20) G		
Not energy efficient - higher running costs		
England & Wales EU Directive 2002/91/EC		
Environmental Impact (CO <sub>2</sub> ) Rating		
	Current	Potential
Very environmentally friendly - lower CO <sub>2</sub> emissions		
(92 plus) A		
(81-91) B		
(69-80) C		
(55-68) D		
(39-54) E		
(21-38) F		
(1-20) G		
Not environmentally friendly - higher CO <sub>2</sub> emissions		
England & Wales EU Directive 2002/91/EC		

We have prepared these property particulars as a general guide to a broad description of the property. They are not intended to constitute part of an offer or contract. We have not carried out a structural survey and the services, appliances and specific fittings have not been tested. All photographs, measurements, floorplans and distances referred to are given as a guide only and should not be relied upon for the purchase of carpets or any other fixtures or fittings. Lease details, service charges and ground rent (where applicable) and council tax are given as a guide only and should be checked and confirmed by your Solicitor prior to exchange of contracts.