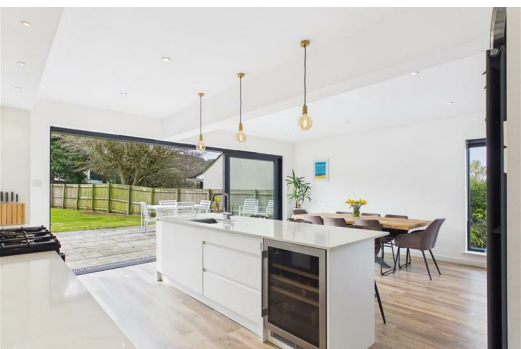




Olive

ESTATE AGENTS



Cedarwood Top Road, Shipham, BS25 1TB £800,000

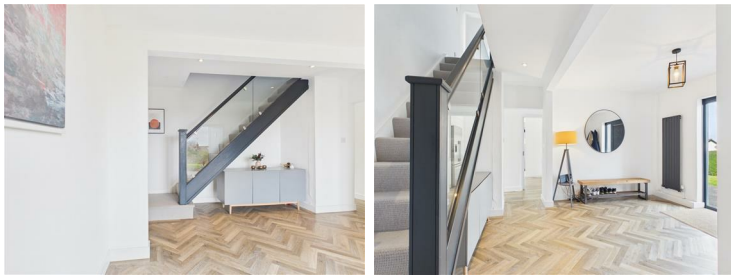
*** STUNNING FOUR/FIVE BEDROOM DETACHED HOME *** OPTIONS TO MAKE A FIFTH BEDROOM *** EXTENDED AND COMPLETELY RENOVATED THROUGHOUT TO A HIGH STANDARD *** OPEN PLAN KITCHEN/DINING/FAMILY ROOM *** SEPARATE UTILITY *** STUDY *** LIVING ROOM *** RECEPTION ROOM TWO *** DOWNSTAIRS CLOAKROOM *** BALCONY, DRESSING ROOM AND EN SUITE TO THE MAIN BEDROOM *** FAMILY BATHROOM *** PRIVATE AND ENCLOSED REAR GARDEN *** LARGE GARDEN TO THE FRONT *** OFF STREET PARKING *** GARAGE *** ELEVATED POSITION WITH FAR REACHING VIEWS OUT TOWARDS THE CHANNEL *** CENTRAL VILLAGE LOCATION *** COUNCIL TAX BAND G *** EPC D *** FREEHOLD ***

*** Please call our local Olive Branch to book a viewing at this luxurious modern property with breathtaking views from the main bedroom, and sizable living space ***

Entrance Hallway



Kitchen/Dining/Family Room



Cloakroom



Study



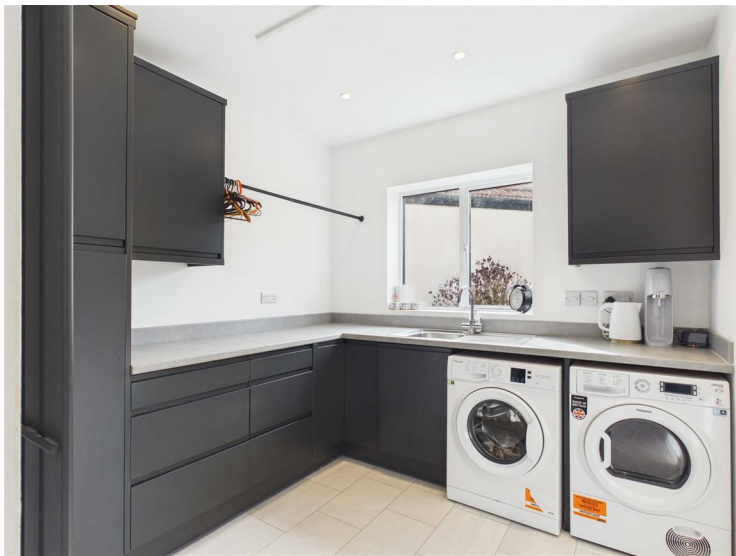
Second Sitting Room

Balcony



Laundry Room

Dressing Room



Main Bedroom Suite



En-Suite



Bedroom Four



Guest Suite/Bedroom Two



Family Bathroom



Bedroom Three



Shower Room



Rear Garden

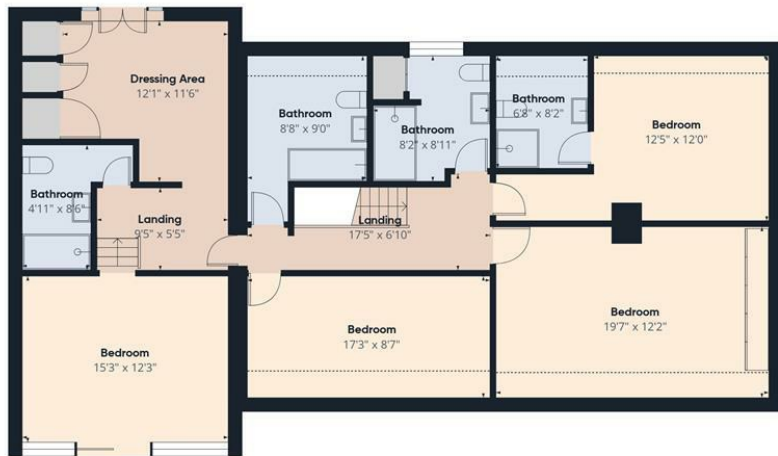


To the Front of The Property





Floor 0



Floor 1

Approximate total area⁽¹⁾
2679 ft²
Reduced headroom
114 ft²

(1) Excluding balconies and terraces

Reduced headroom
..... Below 5 ft

Calculations reference the RICS IPMS 3C standard. Measurements are approximate and not to scale. This floor plan is intended for illustration only.

GIRAFFE360

