



Falcon

01752 600444

53 Crossway

Plympton, Plymouth, PL7 4HX

Guide Price £340,000 - £350,000





In Brief

Stylish 3-bed Stanbury home with stunning kitchen extension and gorgeous sunny garden

Reception Rooms Two large reception room plus kitchen extension

Bedrooms 3 Good sized bedrooms

Heating Gas central heating

Parking Shared driveway and single garage

Area 1081 sq ft

Council Tax C

Tenure Freehold

Description

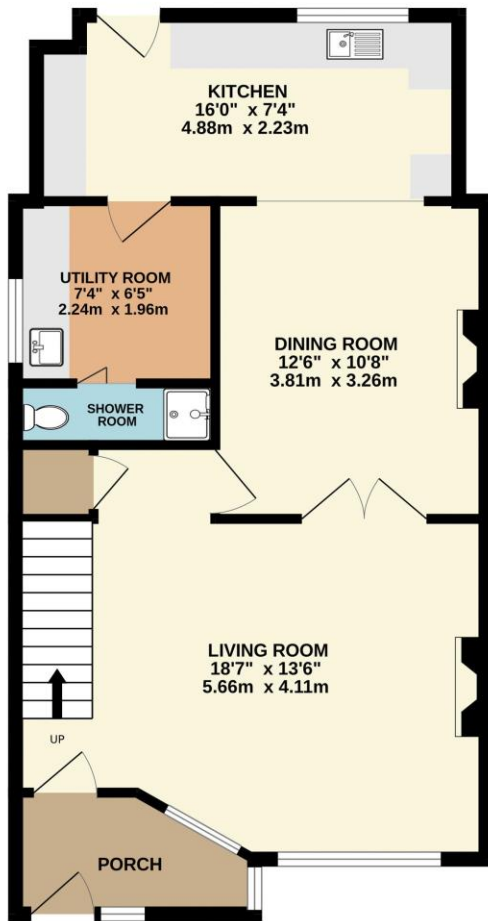
Set within an exceptionally desirable location, this attractive 1950s 'Stanbury' built home offers spacious, beautifully presented accommodation ideal for modern family living. A welcoming entrance porch leads into a fabulous, light-filled living room, where large windows create a bright and airy atmosphere. Double doors open through to a separate dining room, perfect for both everyday use and entertaining. To the rear, a superb extended kitchen forms the heart of the home, featuring stylish contemporary fittings and Velux-style roof windows that flood the space with natural light. A door leads to a useful utility room and on to a convenient ground floor shower room. Upstairs, the property offers three well-proportioned bedrooms along with a modern family bathroom complete with a mixer shower over the bath. Additional benefits include gas central heating and uPVC double glazing throughout. Externally, the home continues to impress. A shared driveway leads to a single garage, while the beautifully landscaped rear garden provides a wonderful outdoor retreat. A generous patio area immediately outside the house is ideal for relaxing or entertaining, with steps rising to a main lawn and a further patio beyond. The garden has been thoughtfully designed to enjoy sunshine throughout the day. Ideally positioned for families, the property is within close proximity to highly regarded local schools including Borringdon Primary and Hele's Secondary School. This is a truly exceptional extended family home, combining character, space, and a fantastic location.

Need A Mortgage?

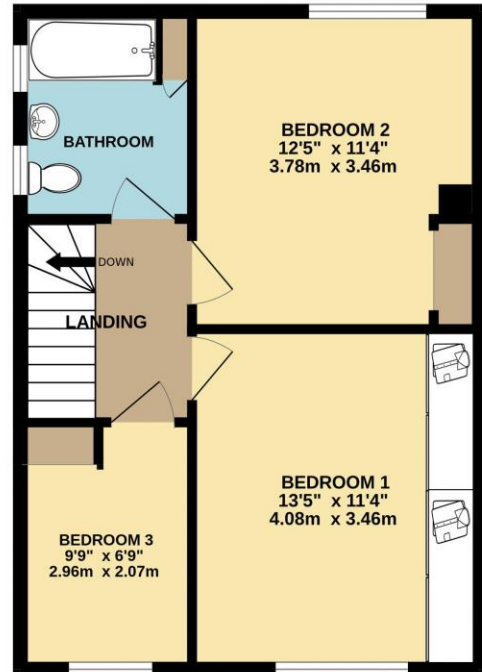
Don't pay more than you need to for your mortgage advice:
ours is only £195 paid when you move!

Floor Plans

GROUND FLOOR
614 sq.ft. (57.0 sq.m.) approx.



1ST FLOOR
467 sq.ft. (43.4 sq.m.) approx.



TOTAL FLOOR AREA : 1081 sq.ft. (100.4 sq.m.) approx.
Made with Metropix ©2026



Fixed Price Conveyancing

A complete solution from just £600 with No sale – No Fee



We have not tested any apparatus, equipment, fixtures and fittings or services and so cannot verify that they are connected, in working order or fit for the purpose. Neither have we had sight of the legal documents to verify the Freehold or Leasehold status of any property; or sight of any consents, including Planning Permissions, building Regulations and Breaches of Covenants that may be required for alterations to the property. A buyer is advised to obtain verification from their Solicitor and/or Surveyor. Items shown in photographs are NOT included unless specifically mentioned within the Sales Particulars. Any floor plans on these details are not drawn to scale and are intended for guidance only

Falcon Property is an Introducer to Bradleys Financial Management Ltd. They are appointed representatives of Sesame Ltd who are authorised and regulated by the Financial Services Authority. Bradleys do not charge for mortgage advice, however a fee paying option is available. Typical fee is £195. Bradleys Financial Management: 16 Mannamead Road, Mutley, Plymouth, PL4 7AA

Your home may be repossessed if you do not keep up repayments on your mortgage.

