

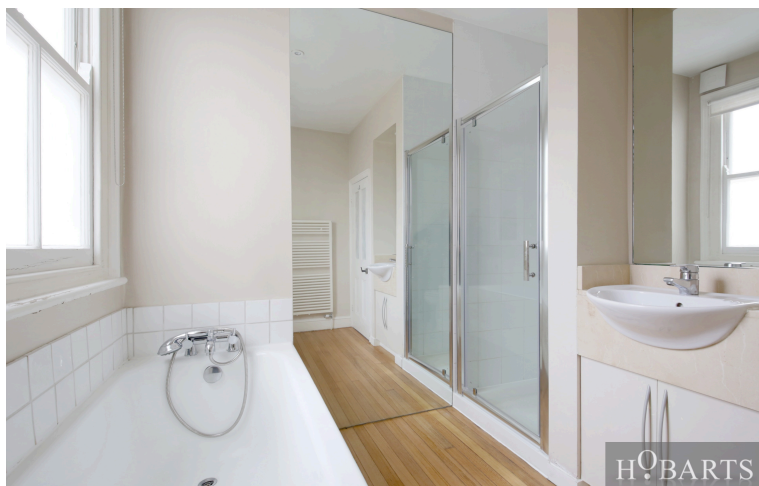
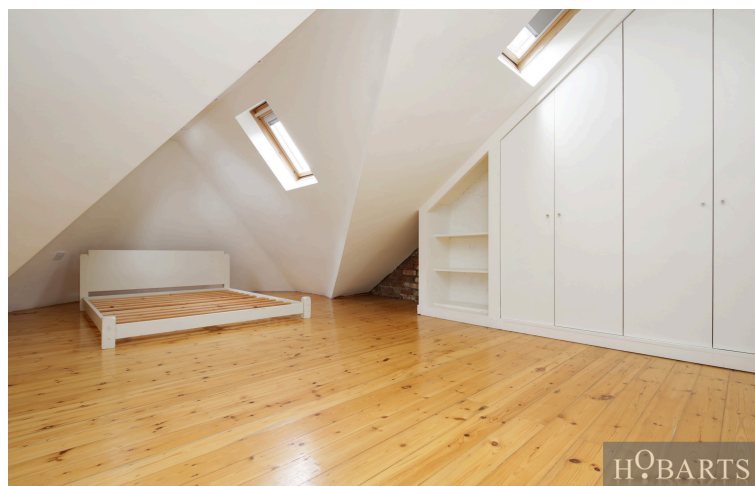


Rosebery Road, Muswell Hill, N10 2LD

Asking Price £2,250,000

This attractive period family home offers generous, well-apportioned accommodation arranged over three floors, blending original character with modern living. A master bedroom plus three additional well-apportioned bedrooms and a family bathroom. A further bedroom with its own en suite. Two spacious reception rooms flow with period features throughout. The modern kitchen/diner is the hub of the home with direct access to the private secluded garden.

Hobarts Estate Agents
23 Ferme Park Road, Stroud Green, London, N4 4DS
stroudgreen@hobarts.co.uk
www.hobarts.co.uk
442083429000



- Five-bedroom period family home
- Two spacious reception rooms
- Modern kitchen/diner with garden access
- Prime Muswell Hill location
- Close to Broadway, schools & Alexandra Park
- Separate utility room
- Attractive period features throughout
- Family bathroom plus guest cloakroom
- Private, secluded rear garden with decked patio
- Catchment for popular schools



ROSEBERRY ROAD
TOTAL APPROX. FLOOR AREA (EXCLUDING EAVES) 2581 SQ.FT. (240 SQ.M.)

Whilst every attempt has been made to ensure the accuracy of the floor plan contained here, measurements of doors, windows, rooms and any other items are approximate and no responsibility is taken for any error, omission, or mis-statement. This plan is for illustrative purposes only and should be used as such by any prospective purchaser. The services, system and appliances shown have not been tested and no guarantee as to their operability or efficiency can be given.



Score	Energy rating	Current	Potential
92+	A		
81-91	B		
69-80	C		78 C
55-68	D	58 D	
39-54	E		
21-38	F		
1-20	G		

Tenure:
Freehold

Ground rent:

Service Charges:

Local Authority:

Viewings:

Strictly by appointment via
HOBARTS ESTATE AGENTS
442083429000

Contact:

23 Ferme Park Road, Stroud
Green, London, N4 4DS

stroudgreen@hobarts.co.uk
www.hobarts.co.uk

rightmove

PrimeLocation.com

homes24.co.uk

Zoopla.co.uk

propertyfinder.com



These property details, including measurements, floor plans and items depicted in photographs etc. are intended only as a brief guide to prospective purchasers and are not intended to be relied upon for any purpose whatsoever. Any interested party should satisfy themselves by inspection or otherwise as to the correctness of each statement contained in these details.