



Connells

Bluebell Lane
Sharphorne East Grinstead



Property Description

This beautifully presented three-bedroom semi-detached home enjoys stunning views across surrounding woodlands and offers stylish, modern living throughout. The property features two generous double bedrooms, with the principal bedroom benefiting from a contemporary en-suite shower room, alongside a well-proportioned single bedroom ideal for a child's room, home office or guest space.

Finished to a high standard, the home offers bright and modern accommodation throughout, perfectly suited for families, first-time buyers or those looking to upsize. Externally, the rear garden provides a wonderful space to relax and entertain, boasting a patio seating area complemented by beautiful shrubbery and established planting, creating a peaceful outdoor retreat.

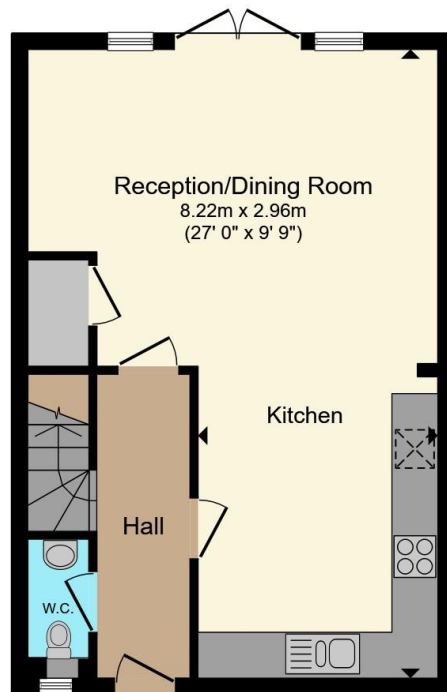
Early viewing is highly recommended to fully appreciate the setting, finish and woodland outlook this fantastic home has to offer.



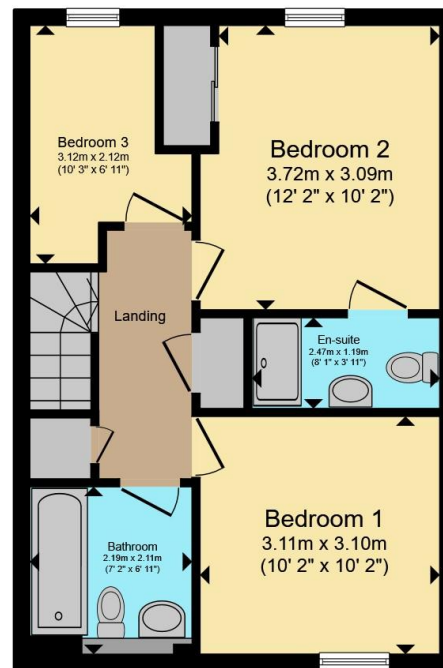








Ground Floor



First Floor

Total floor area 88.0 m² (947 sq.ft.) approx

This floor plan is for illustrative purposes only. It is not drawn to scale. Any measurements, floor areas (including any total floor area), openings and orientation are approximate. No details are guaranteed, they cannot be relied upon for any purpose and they do not form part of any agreement. No liability is taken for any error, omission or misstatement. A party must rely upon its own inspection(s). Powered by www.propertybox.io



To view this property please contact Connells on

T 01342 325 911
E eastgrinstead@connells.co.uk

90 London Road
EAST GRINSTEAD RH19 1EP

EPC Rating: C Council Tax
Band: D

Tenure: Freehold

view this property online connells.co.uk/Property/EGR404872



1. MONEY LAUNDERING REGULATIONS Intending purchasers will be asked to produce identification documentation at a later stage and we would ask for your co-operation in order that there will be no delay in agreeing the sale. 2. These particulars do not constitute part or all of an offer or contract. 3. The measurements indicated are supplied for guidance only and as such must be considered incorrect. Potential buyers are advised to recheck measurements before committing to any expense. 4. We have not tested any apparatus, equipment, fixtures, fittings or services and it is in the buyers interest to check the working condition of any appliances.

Connells Residential is registered in England and Wales under company number 1489613, Registered Office is Cumbria House, 16-20 Hockliffe Street, Leighton Buzzard, Bedfordshire, LU7 1GN. VAT Registration Number is 500 2481 05.

See all our properties at www.connells.co.uk | www.rightmove.co.uk | www.zoopla.co.uk

Property Ref: EGR404872 - 0003