



Elmwood Road, Hartlepool TS26 0JS

welcome to

Elmwood Road, Hartlepool

This wonderful two-bedroom semi-detached home is quietly positioned within a well-regarded residential setting and offers a superb blend of comfort, character, and practicality.

Entrance Lobby

Entered via a UPVC double glazed door into the entrance lobby, stairs to first floor, radiator, door leading into lounge.

Lounge

UPVC double glazed bay window to front, radiator, laminate flooring, coved cornicing, TV point, feature dual fuel log burner with a marble surround and hearth and a feature tiled surround, door leading into the kitchen/ diner.

Kitchen/ Diner

Kitchen area
Bright and airy with a UPVC double glazed window to the rear and side, laminate flooring, beautiful range of cream country style wall and base units with complimentary wood chop effect working surfaces and matching upstands, plumbing and recess for washing machine, white inset sink/ drainer with swan neck mixer tap, four ring electric hob with a splashback and glass and stainless steel extractor over, inset electric oven, inset electric microwave, integrated fridge/ freezer, inset wine cooler, radiator, coved cornicing, space for dining table, understairs storage cupboard.

Dining/ living area

Radiator, UPVC double glazed French doors to side giving access to garden, door leading to a downstairs shower room.

Downstairs Shower Room

Ultra modern, two UPVC double glazed picture window to front and rear, tiled walls, tiled floor, clad ceiling, spotlights to ceiling, extractor fan, white heated towel rail, low level low flush wc, wash hand basin with mixer tap on a vanity unit, shower cubicle with electric Triton shower and hand held

attachment.

Landing

Stairs from entrance, UPVC double glazed window to side, doors leading to all principal rooms.

Bedroom 1

UPVC double glazed bay window to front, radiator, coved cornicing, door that leads to stairs to the first floor, UPVC double glazed window to the front, radiator, fixed staircase that leads to the loft space.

Loft Space

Built in storage in the eaves, power, light, radiator, skylight window to the rear.

Bedroom 2

UPVC double glazed window to the rear, radiator.

Family Bathroom

UPVC double glazed window to rear, vinyl flooring, built in storage cupboard housing the wall mounted Ideal combi boiler, chrome heated towel rail, low level low flush wc, panel bath with mixer tap with a hand held shower over and a Concertina shower screen, wall mounted wash hand basin with mixer tap and tiled splashback, built in storage units, spotlights to ceiling.

Externally

Front Of Property

Wall enclosed with a block paved driveway, ease of maintenance with stone bed section and mature planted areas, outdoor tap, outdoor sockets to side.

Rear Garden

Well maintained, attractive, fence enclosed, lawned area, mature planted borders, wood built pergola



with patio area, garden pond, wood built summerhouse with power, not directly overlooked.



view this property online mannersandharrison.co.uk/Property/HAR120676



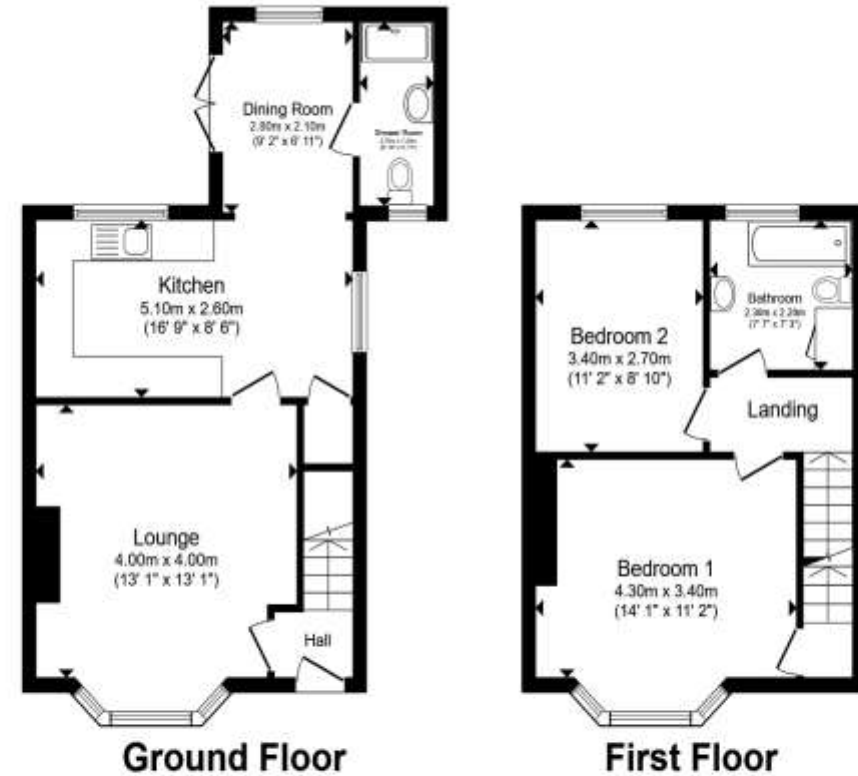
welcome to

Elmwood Road, Hartlepool

- QUIET RESIDENTIAL LOCATION
- MODERN BATHROOMS
- PRIVATE GARDEN
- OFF-STREET PARKING
- USEFUL LOFT SPACE

Tenure: Freehold EPC Rating: Awaited
Council Tax Band: B

£150,000



Total floor area 79.9 m² (860 sq.ft.) approx

This floor plan is for illustrative purposes only. It is not drawn to scale. Any measurements, floor areas (including any total floor area), openings and orientation are approximate. No details are guaranteed, they cannot be relied upon for any purpose and they do not form part of any agreement. No liability is taken for any error, omission or misstatement. A party must rely upon its own inspection(s). Powered by www.propertybox.io



view this property online mannersandharrison.co.uk/Property/HAR120676



Property Ref:
HAR120676 - 0003

1. MONEY LAUNDERING REGULATIONS Intending purchasers will be asked to produce identification documentation at a later stage and we would ask for your co-operation in order that there is no delay in agreeing the sale. 2. These particulars do not constitute part or all of an offer or contract. 3. The measurements indicated are supplied for guidance only and as such must be considered incorrect. Potential buyers are advised to recheck measurements before committing to any expense. 4. We have not tested any apparatus, equipment, fixtures or services and it is in the buyers interest to check the working condition of any appliances. 5. Where an EPC, or a Home Report (Scotland only) is held for this property, it is available for inspection at the branch by appointment. If you require a printed version of a Home Report, you will need to pay a reasonable production charge reflecting printing and other costs. 6. We are not able to offer an opinion either written or verbal on the content of these reports and this must be obtained from your legal representative. 7. Whilst we take care in preparing these reports, a buyer should ensure that his/her legal representative confirms as soon as possible all matters relating to title including the extent and boundaries of the property and other important matters before exchange of contracts.

Manners & Harrison is a trading name of Sequence (UK) Limited which is registered in England and Wales under company number 4268443, Registered Office is Cumbria House, 16-20 Hockliffe Street, Leighton Buzzard, Bedfordshire, LU7 1GN. VAT Registration Number is 500 2481 05.

manners & harrison



01429 261351



Hartlepool@mannersandharrison.co.uk



Shrewsbury House 129 York Road,
HARTLEPOOL, Durham, TS26 9DW



mannersandharrison.co.uk