



# 62 Auckland Hill

, SE27 9QQ

**£2,300 PCM**

Galloways are delighted to present to the market this beautifully presented three-bedroom semi-detached house on Auckland Hill. The property is bright and airy throughout and has been recently redecorated to a high standard.

The accommodation comprises a spacious reception room, a dining room, and a separate kitchen on the ground floor. Upstairs, the property offers three bedrooms and a contemporary bathroom. Externally, the home benefits from a large rear garden, providing excellent outdoor space.

The property is situated in a fantastic location, within easy reach of an array of local amenities, shops, cafés, and restaurants, and is within walking distance of West Norwood Station. West Norwood Station provides direct rail links to London Bridge (approximately 23 minutes) and London Victoria (approximately 28 minutes), making it an ideal location for commuters.

Lambeth Council  
Council Tax Band D £1954.00  
Total Deposit ££2653.84 (5 Weeks Rent)

## Viewing

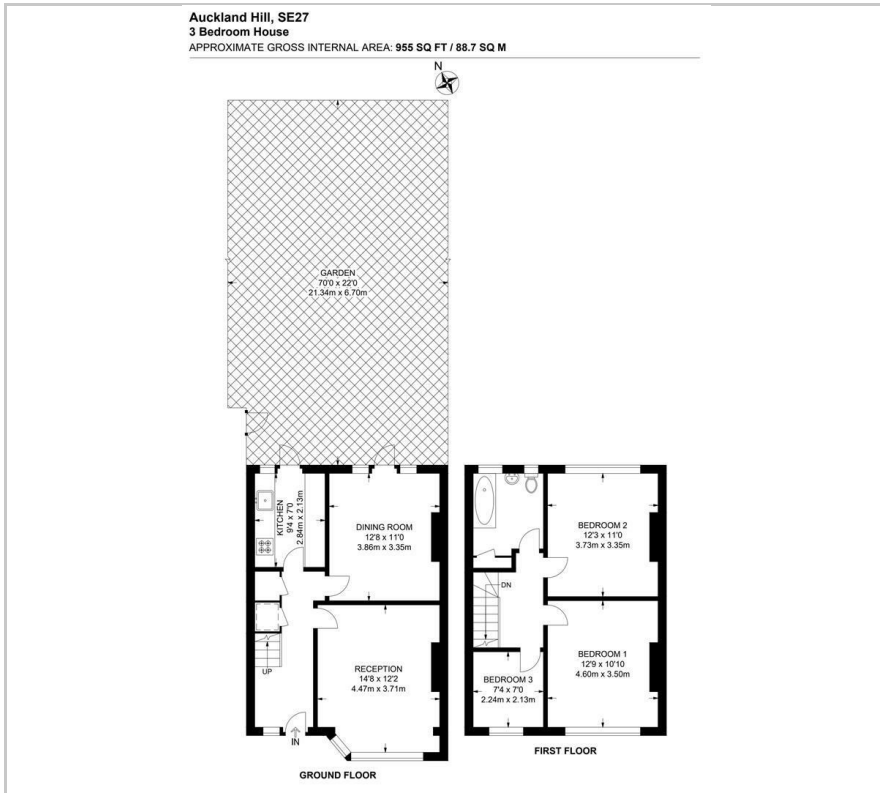
Please contact our Galloways West Norwood Office on 020 8766 6111

if you wish to arrange a viewing appointment for this property or require further information

- BEAUTIFULLY PRESENTED THREE-BEDROOM SEMI-DETACHED HOUSE
- BRIGHT AND AIRY THROUGHOUT, RECENTLY REDECORATED
- SPACIOUS RECEPTION ROOM
- SEPARATE DINING ROOM
- THREE BEDROOMS
- GAS CENTRAL HEATING
- UNFURNISHED
- LARGE REAR GARDEN
- WITHIN WALKING DISTANCE OF WEST NORWOOD STATION
- DIRECT RAIL LINKS TO LONDON BRIDGE AND LONDON VICTORIA



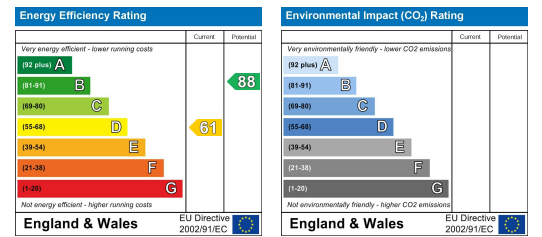
## Floor Plan



## Area Map



## Energy Efficiency Graph



These particulars, whilst believed to be accurate are set out as a general outline only for guidance and do not constitute any part of an offer or contract. Intending purchasers should not rely on them as statements of representation of fact, but must satisfy themselves by inspection or otherwise as to their accuracy. No person in this firm's employment has the authority to make or give any representation or warranty in respect of the property.