



West Hill, Blunsdon, Swindon, SN26 7BQ

£550,000
(Subject to Contract)

Hanley's

West Hill Blunsdon SN26 7BQ

Situated on the edge of this sought after village with far reaching rural views to the front, this three bedroom detached bungalow is set on a large plot and offers the potential for extension and loft conversion subject to planning. The accommodation comprises: Entrance hall with access to a large loft area, dual aspect living room, re-fitted kitchen with built-in oven and hob, dining area with sliding patio doors opening onto the rear garden, bathroom with shower over the bath and three bedrooms. The property also benefits from gas radiator central heating and double glazing. Outside there is a block paved driveway to the front with ample parking leading to the attached garage. Side access leads to the large attractive rear garden which has been well maintained with patio areas, steps down to the shaped lawn with flower and shrub borders, selection of mature trees and bushes, detached workshop with power and light. The property is offered for sale with no onward chain.



1 Bathroom



3 Bedrooms



2 Receptions

EPC: TBA

Council Tax Band: D

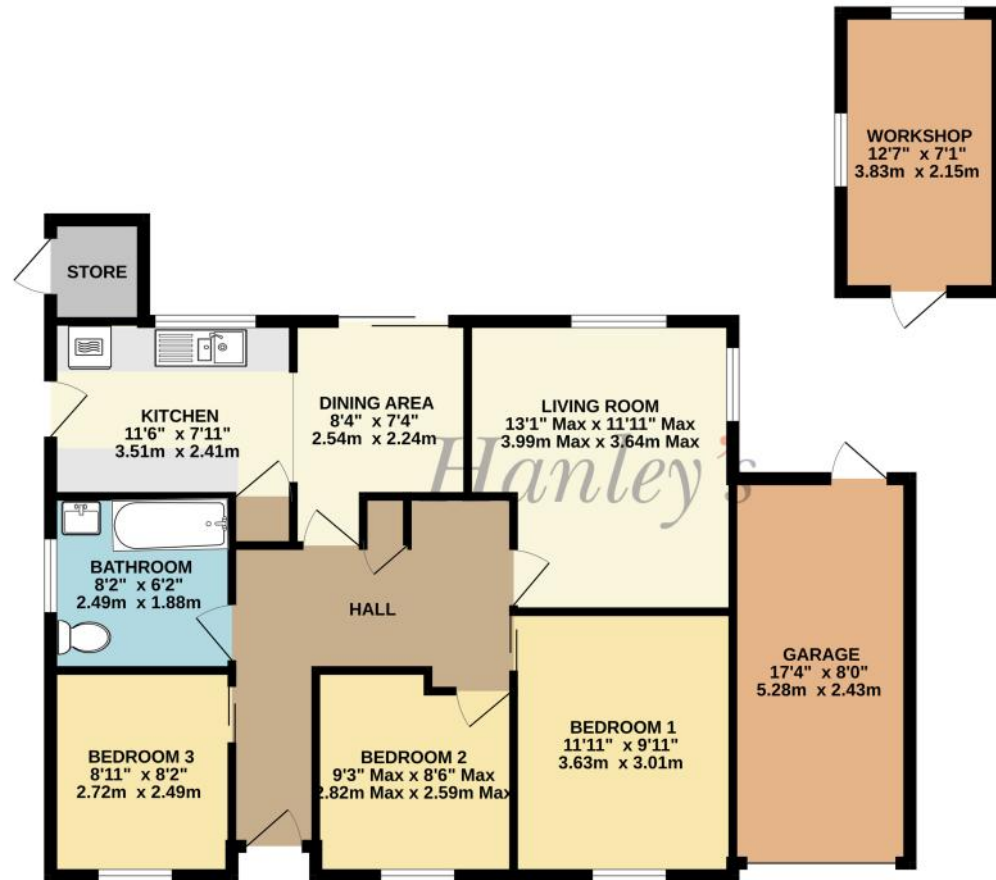
Tenure: Freehold



DISCLAIMER. These particulars, whilst believed to be accurate are set out as a general outline for guidance and do not constitute any part of an offer or contract. Intending purchasers should not rely on them as statements or representation of fact, but must satisfy themselves by inspection or otherwise as to their accuracy. No person in this firm's employment has the authority to make or give any representation or warranty in respect of the property. Floor plan measurements and distances are approximate only. We have not carried out a detailed survey nor tested the services, appliances or specific fittings. Your home is at risk if you do not keep up repayments on a mortgage or other loan secured on it.



1008 sq.ft. (93.6 sq.m.) approx.



TOTAL FLOOR AREA: 1008 sq.ft. (93.6 sq.m.) approx.

Whilst every attempt has been made to ensure the accuracy of the floorplan contained here, measurements of doors, windows, rooms and any other items are approximate and no responsibility is taken for any error, omission or mis-statement. This plan is for illustrative purposes only and should be used as such by any prospective purchaser. The services, systems and appliances shown have not been tested and no guarantee as to their operability or efficiency can be given.
Made with Metropix ©2026

Hanley's Estate Agents
 25 High Street, Highworth, SN6 7AG
 Tel: 01793 762005 mail@hanleys.co.uk

