

Towers Wills

Town & Country

📞 01935 577 032 | 01460 298 530 | ✉ info@towerswills.co.uk



11, Rye Gardens, Yeovil, Somerset BA20 2TF

£425,000

Towers Wills are delighted to bring to the market this impressive and exceptionally well-presented four-bedroom detached family home, situated within the highly sought-after Watercombe Heights development on the western side of Yeovil. Offering excellent commuter links via the surrounding road network and conveniently positioned within easy reach of Yeovil Town Centre and local amenities, this superb property provides spacious, versatile accommodation ideally suited to modern family living. Lovingly maintained and beautifully presented by the current owners, the property offers well-proportioned accommodation throughout, together with driveway parking, a single garage and a wonderfully established rear garden.

Accommodation:

The accommodation briefly comprises a welcoming and spacious entrance hall providing access to the principal ground floor rooms. The generous lounge/dining room enjoys an abundance of natural light and benefits from double doors opening onto the rear garden, creating an ideal space for both everyday living and entertaining. The recently updated kitchen is stylishly appointed and complemented by a useful adjoining utility room with access to the cloakroom/WC.

To the first floor, the landing leads to four well-proportioned bedrooms, three of which are comfortable doubles, whilst the fourth bedroom offers flexibility as a child's bedroom, home office or study. The principal bedroom benefits from its own en-suite shower room, with the remaining bedrooms served by a well-appointed family bathroom.

Outside:

A particular highlight of the property is the beautifully maintained rear garden, offering a high degree of privacy and a wonderful outdoor space to enjoy throughout the year. A paved patio provides the perfect setting for al fresco dining, with the remainder of the garden predominantly laid to lawn and enhanced by mature trees, established shrubs and thoughtfully planted borders. Tucked away in one corner is an attractive summer house, ideal for relaxing during the warmer months, whilst a useful storage shed provides additional practicality.

To the front of the property is a driveway providing off-road parking for two vehicles, together with access to the single garage featuring an up-and-over door.

An internal viewing is strongly recommended to fully appreciate the quality, space and excellent position of this outstanding family home, located within one of Yeovil's most desirable residential developments.

Key Features

- Detached Family Home
- Four Bedrooms
- Master En-suite
- Driveway & Garage
- Delightful Rear Garden
- Popular Location

Contact Us

**Towers Wills Estate
Agents - Yeovil**

114, Hendford Hill
Yeovil

Somerset

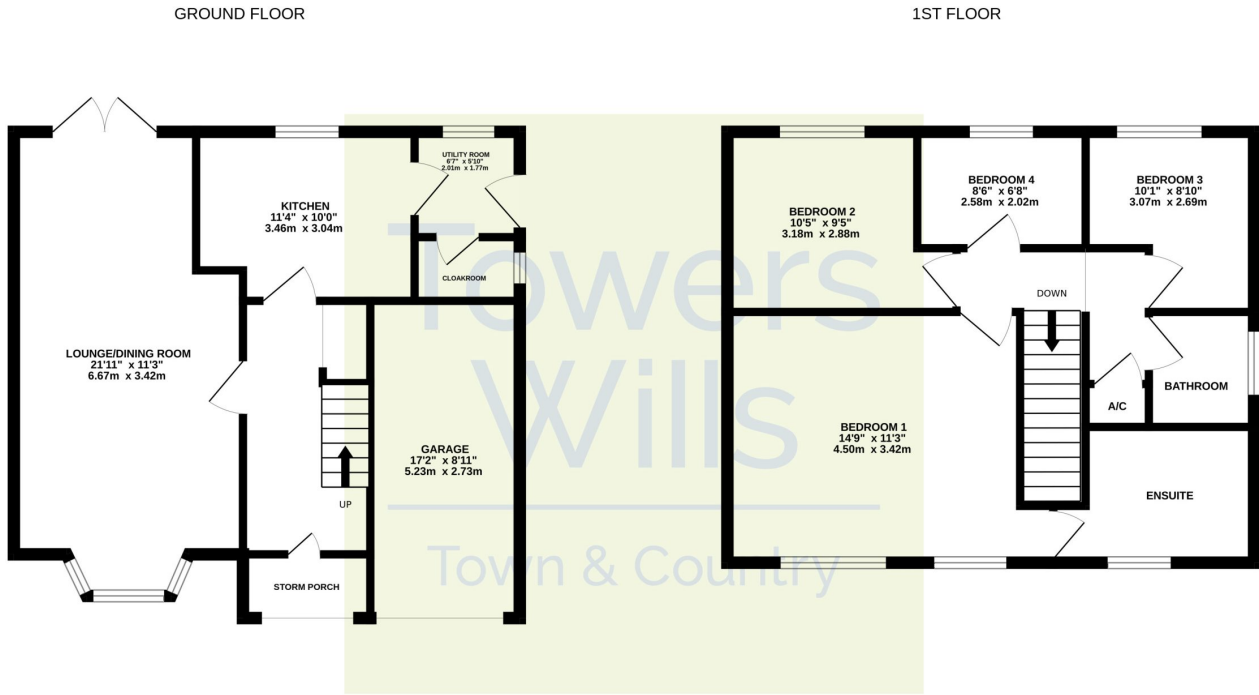
BA202RF

T: 01935 577032

E: info@towerswills.co.uk



Floor Plan



Whilst every attempt has been made to ensure the accuracy of the floorplan contained here, measurements of doors, windows, rooms and any other items are approximate and no responsibility is taken for any error, omission or mis-statement. This plan is for illustrative purposes only and should be used as such by any prospective purchaser. The services, systems and appliances shown have not been tested and no guarantee as to their operability or efficiency can be given.
Made with Metropix ©2026

Please Note No tests have been undertaken of any of the services and any intending purchasers should satisfy themselves in this regard. Towers Wills Ltd for themselves and for the vendor of this property whose agents they are, give notice that, (i) these particulars do not constitute any part of an offer or contract, (ii) all statements contained within these particulars are made without responsibility on the part of Towers Wills or the vendor, (iii) whilst made in good faith, none of the statements contained within these particulars are to be relied upon as a statement of representation or fact, (iv) any intending purchaser must satisfy him/herself by inspection or otherwise as to the correctness of each of the statements contained within these particulars, (v) the vendor does not make or give either Towers Wills or any person in their employment any authority to make or give representation or warranty whatsoever in relation to this property.

Photographs / Floor Plans Photographs are reproduced for general information and it must not be inferred that any item is included for sale with this property. Please note floor plans are not to scale and are for identification purposes only. The photographs used in these particulars may have been taken with the use of a wide angle lens. If you have any queries as to the size of the accommodation or plot, please address these with the agent prior to making an appointment to view

Towers Wills

The White House, 114 Hendford Hill, Yeovil BA20 2RF

Yeovil 01935 577032 / South Petherton 01460 298530

info@towerswills.co.uk | www.towerswills.co.uk