



WHITEHORNES

Buy. Sell. Let. Relax!

0114 268 8533
info@whitehorns.com
www.whitehorns.com



60 Rushdale Road, Meersbrook

Sheffield

Guide Price £250,000 – £260,000

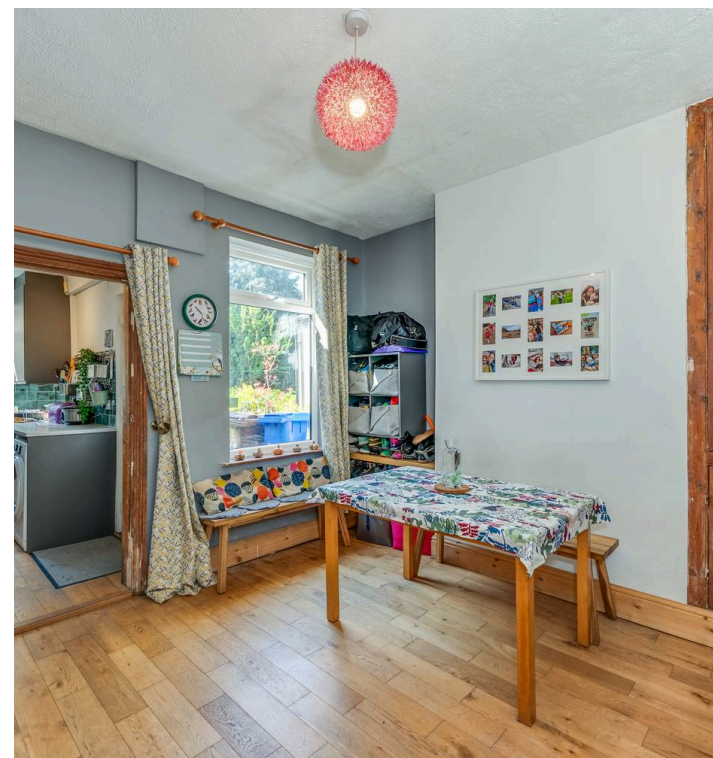
60 Rushdale Road

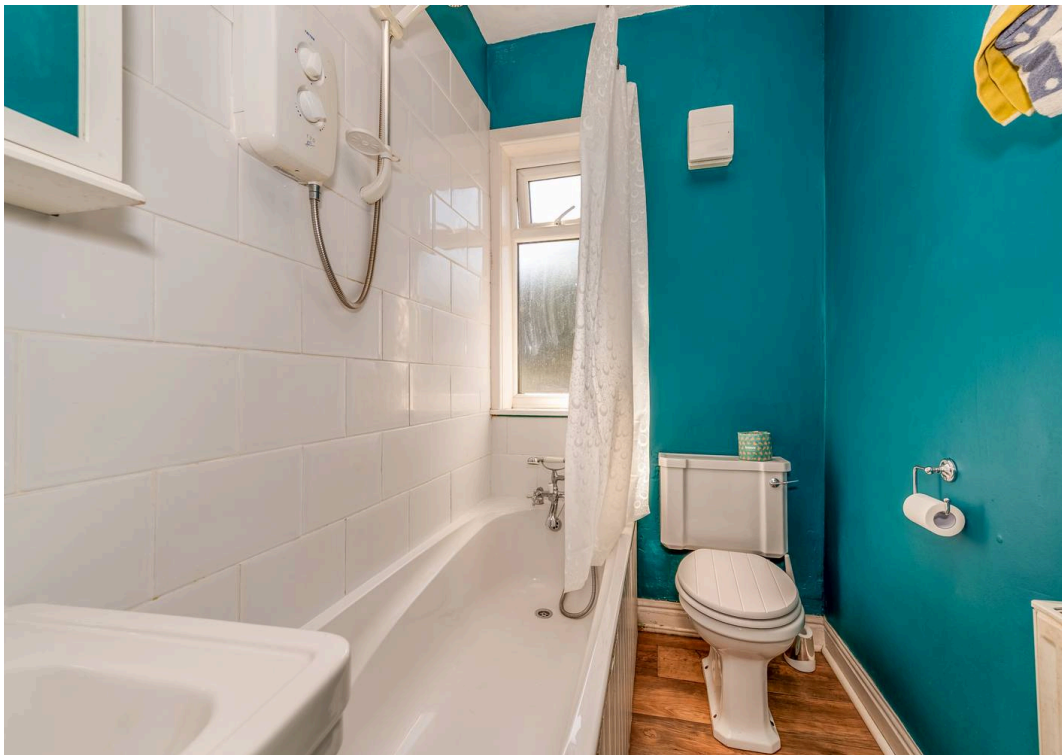
Meersbrook, Sheffield

This gorgeous three bedroom bay-windowed Victorian terraced home is set over three floors, offering an impressive 1,106 square feet of beautifully presented living accommodation. Ideally suited to first time buyers, professional couples, and families alike, this property is located in the heart of the ultra-popular Meersbrook area, with the renowned Meersbrook Park just a short stroll away. The house retains a wealth of original period features, including high ceilings, decorative coving, and fireplaces, all thoughtfully blended with contemporary finishes to create a home full of character and charm. The spacious lounge, with its striking bay window, leads through to a generous dining room and a stylish off-shot kitchen, providing the perfect setting for modern living and entertaining.

Council Tax band: A Tenure: Leasehold

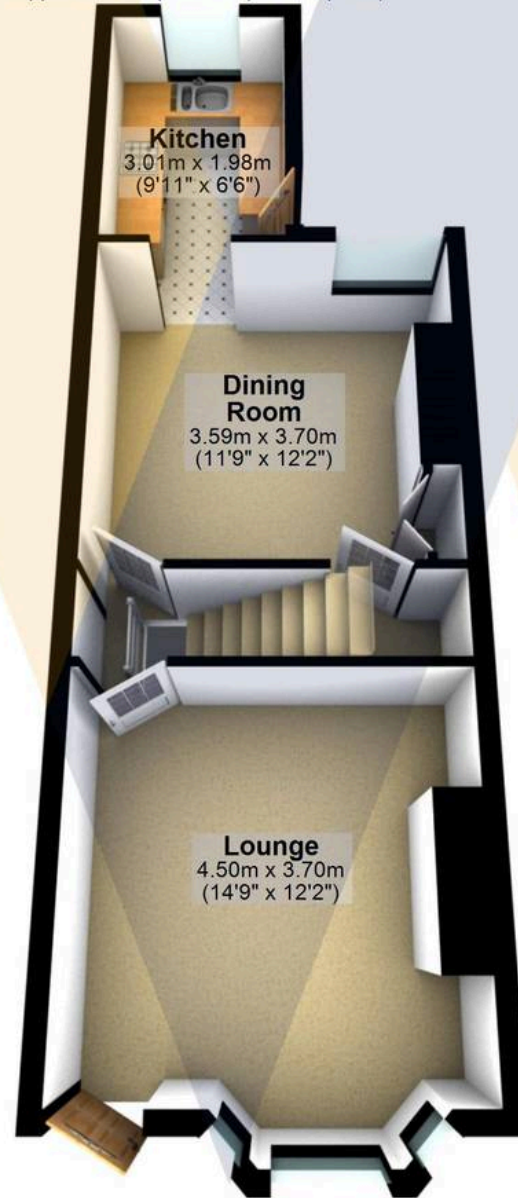
- GORGEOUS THREE BEDROOM BAY WINDOWED VICTORIAN TERRACED HOME
- SET OVER THREE FLOORS THAT TOTAL AN IMPRESSIVE 1,106 SQ FEET WITH AN OFF SHOT KITCHEN
- PERFECT FOR FIRST TIME BUYERS PROFESSIONAL COUPLE AND FAMILIES ALIKE WITH VIEWING ABSOLUTELY ESSENTIAL TO DO FULL JUSTICE
- HEART OF ULTRA POPULAR MEERSBROOK WITH THE PARK A SHORT STROLL
- WALKING DISTANCE TO NUMEROUS FASHIONABLE INDEPENDENT EATERIES CAFES AND SHOPS
- RETAINING A WEALTH OF THE ORIGINAL PERIOD FEATURES CHARACTER AND CHARM ASSOCIATED WITH A PROPERTY FROM THIS ERA AND FINISHED TO A MODERN STANDARD
- PRIVATE REAR LARGER THAN EXPECTED SUNNY GARDEN AND EASY ON ROAD PARKING TO THE FRONT POTENTIAL TO CONVERT THE EXISTING CELLAR AND





Ground Floor

Approx. 37.2 sq. metres (400.4 sq. feet)



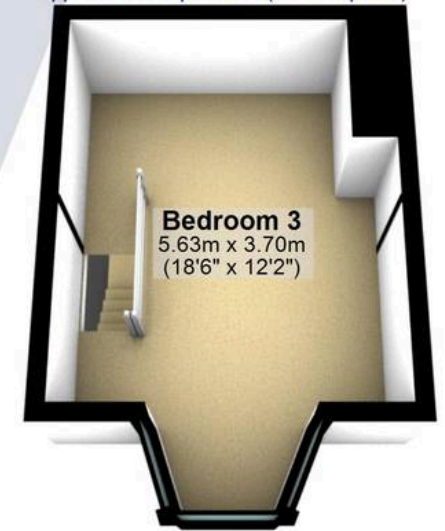
First Floor

Approx. 30.8 sq. metres (331.2 sq. feet)



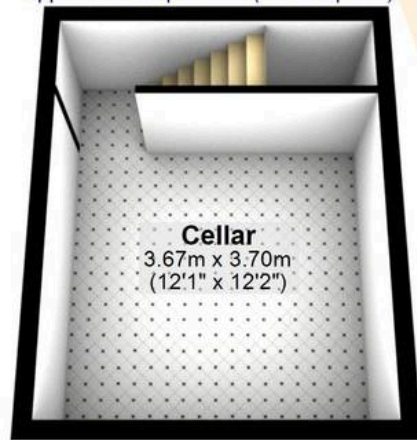
Second Floor

Approx. 17.9 sq. metres (192.2 sq. feet)



Cellar

Approx. 17.1 sq. metres (184.2 sq. feet)



Total area: approx. 102.9 sq. metres (1108.0 sq. feet)

All measurements are approximate
Plan produced using PlanUp.

60 Rushdale Road



WHITEHORNS

Buy. Sell. Let. Relax!

0114 268 8533
info@whitehorns.com
www.whitehorns.com