



 3

 2

 1

 D

**DavidJames**  
the estate agent

**Bennett Road, Mapperley, Nottingham, NG3 6BT**

**£1,300 Per Calendar Month**

# About This Property

Situated in the popular area of Mapperley, this beautifully presented three-bedroom semi-detached house presents a perfect blend of modern living and charm. The property offers a welcoming and spacious living room, complete with a feature fireplace and a large bay window that fills the space with natural light. The dining room, accessed through stylish double bifold doors, provides a seamless transition to the outdoors with patio doors leading to a generous rear garden. The modern kitchen is a highlight, featuring integrated appliances, including an oven, hob, extractor, and washing machine. The shower room is equally impressive, equipped with a contemporary white suite and a convenient walk-in shower. Outside, the property benefits from a large garden with a small decking area, a spacious driveway, and there is a garage for additional storage.

## TENANCY DETAILS

Available From: 30th June 2026

Furnishing: Unfurnished

EPC Rating: D

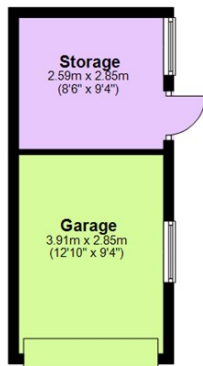
Council Band: B

- Well-presented semi-detached house
- Three bedroom
- Spacious living room with feature fireplace and bay window
- Dining room with patio doors leading to rear garden
- Modern kitchen with integrated appliances
- Modern shower room with white suite and walk-in shower
- Gas central heating and double glazed windows
- Large rear garden with small decking area
- Garage and driveway
- Close to Mapperley's local amenities & transport links

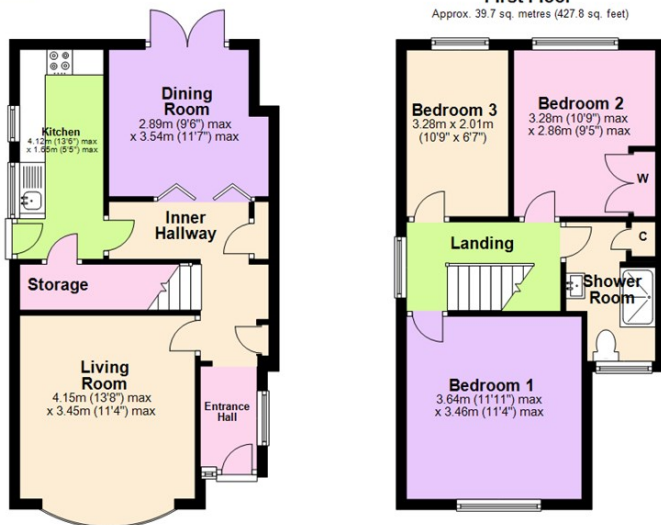




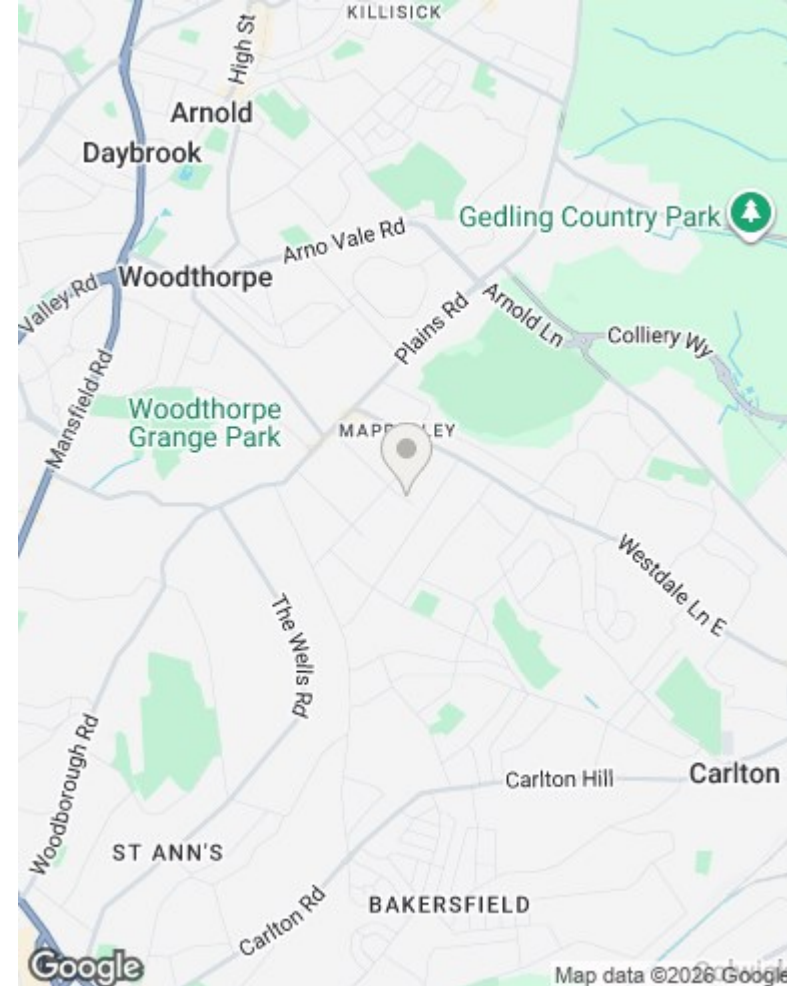
**Ground Floor**  
Approx. 61.4 sq. metres (660.4 sq. feet)



**First Floor**  
Approx. 39.7 sq. metres (427.8 sq. feet)



Total area: approx. 101.1 sq. metres (1088.3 sq. feet)



These particulars are produced in good faith, are set out as a general guide only and do not constitute any part of a contract. No person in the employment of David James Estate Agents Ltd has any authority to make any representation whatsoever in relation to the property. All services, together with electrical fittings or fitted appliances have NOT been tested. All the measurements given in the details are approximate. Floor plans are for illustrative purposes only and are not drawn to scale. The position and size of doors, windows, appliances and other features are approximate only. The photographs of this property have been taken with a 10mm wide-angle lens. No responsibility can be accepted for any loss or expense incurred in viewing. If you have a property to sell you may wish to take advantage of our free valuation service. David James Estate Agents have established professional relationships with third-party suppliers for the provision of services to Clients. As remuneration for this professional relationship, the agent receives referral commission from the third-party company. David James Estate Agents receives the following commission from each third party supplier on a per referral basis: W A Barnes Ltd: £60 including VAT. All Moves UK Ltd: 18% including VAT of the invoice total (£107 including VAT average). MoveWithUs Limited: £188 including VAT (average).

**Council Tax Band: B**  
**Gedling Borough Council**

**DavidJames**  
the estate agent

David James Estate Agents  
45b Plains Road, Mapperley, Nottingham, NG3 5JU  
t: 0115 962 4213 e: lettings@david-james.com

