



1 Bedrooms | 1 Bathrooms | 1 Reception Rooms

Biddulph Road | South Croydon | CR2 6QB

Guide price £240,000

LOFT

Biddulph Road |
 South Croydon | CR2 6QB
 Guide price £240,000

- Beautifully presented apartment with a local parking space
- Share of freehold with affordable service charge
- Convenient separate storage unit located downstairs Exterior

- Spacious bedroom featuring custom fitted wardrobes
- Recently renovated throughout
- Bright and airy open-plan living accommodation

First Floor

Hallway

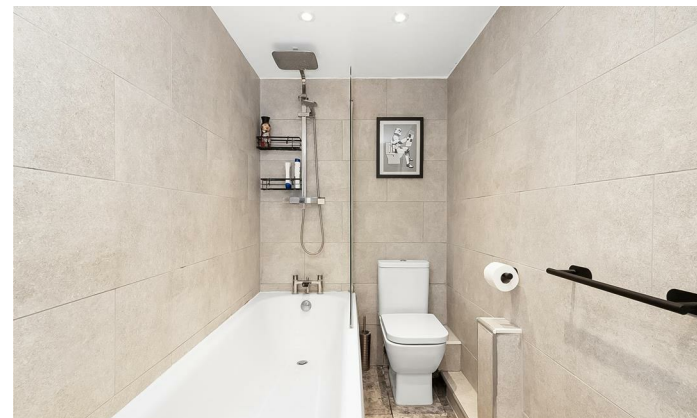
Bedroom
 13'8 x 11'8 (4.17m x 3.56m)

Bathroom

Reception room / Kitchen
 17'4 x 15'8 (5.28m x 4.78m)

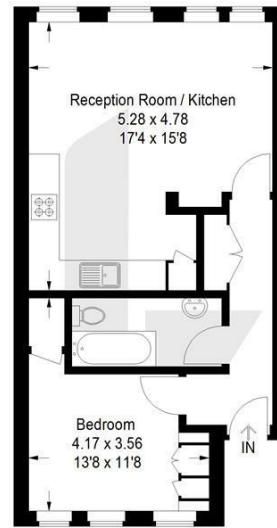
Parking

Storage cupboard



Dell House, Biddulph Road, CR2

Approximate Gross Internal Area
 44.4 sq m / 478 sq ft



First Floor

This plan is for layout guidance only. Not drawn to scale unless stated. Windows and door openings are approximate. Whilst every care is taken in the preparation of this plan, please check all dimensions, shapes and compass bearings before making any decisions reliant upon them. (ID1292310)

EPC Rating: E

hello@loft-estates.co.uk
 0208 660 8070