

## Tern Avenue, Horsham

Offers Over £400,000

2 1 1



A modern Two Double Bedroom Semi Detached Home located at the end of a small cul de sac, boasting an impressive Corner Plot Rear Garden and Driveway Parking for two cars.

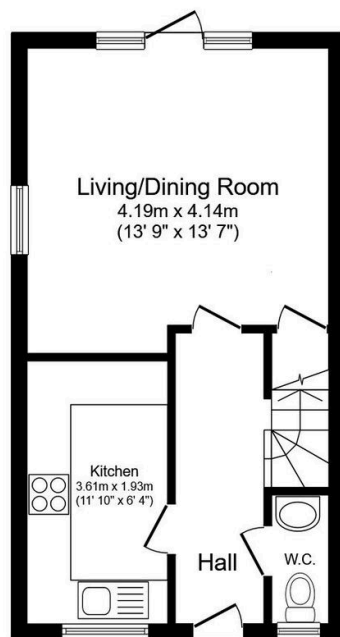
Tenure: Freehold

Council Tax Band: D

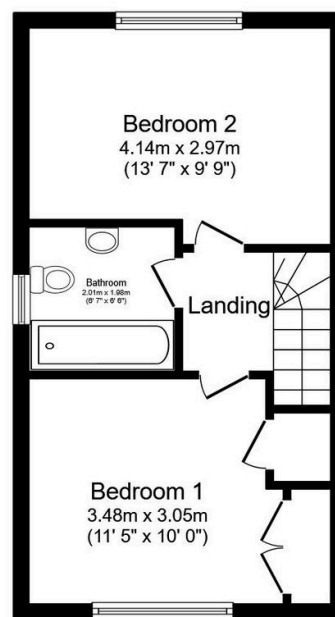
EPC: Current B - Potential A

## Key Features

- Watch Our Video Tour
- Attractive Semi Detached Home
- Cul De Sac Location
- Family Bathroom With Window
- 0.3 Miles From Littlehaven Station
- Two Generous Double Bedrooms
- Corner Plot Rear Garden
- 11ft Modern Fitted Kitchen
- Close To Local Shops
- Ground Floor WC



**Ground Floor**  
Floor area 32.7 sq.m. (352 sq.ft.)



**First Floor**  
Floor area 32.7 sq.m. (352 sq.ft.)

Total floor area: 65.4 sq.m. (704 sq.ft.)

This floor plan is for illustrative purposes only. It is not drawn to scale. Any measurements, floor areas (including any total floor area), openings and orientations are approximate. No details are guaranteed, they cannot be relied upon for any purpose and do not form any part of any agreement. No liability is taken for any error, omission or misstatement. A party must rely upon its own inspection(s). Powered by [www.Propertybox.io](http://www.Propertybox.io)