



PEAR
PROPERTIES



Richmond Road, Worthing

£160,000



Richmond Road, Worthing

Well presented studio in period building with private south facing garden, parking, modern kitchen and bathroom. Close to town, station and seafront. Long lease and share of freehold.

Council Tax band: A

Tenure: Leasehold

EPC Energy Efficiency Rating: E

EPC Environmental Impact Rating: E

- Well Presented Studio Flat
- Fitted Kitchen with Ample Storage
- Fully Tiled Bathroom
- Remainder of 999 Year Lease
- Share Of Freehold With No Fixed Charges
- Use of Parking Space
- Private South Facing Rear Garden
- Popular Residential Location Close to Town Centre, Train Station and Seafront
- Attractive Period Building
- Please Take A Look At The Virtual Tour



Entrance Hall

3' 8" x 3' 7" (1.13m x 1.09m)

Double glazed front door leading in to entrance.

Living Room/Bedroom

13' 6" x 12' 0" (4.12m x 3.66m)

A bright and spacious studio room with large double glazed window.

Kitchen

12' 3" x 6' 0" (3.73m x 1.84m)

A range of wall and base units with space for appliances.

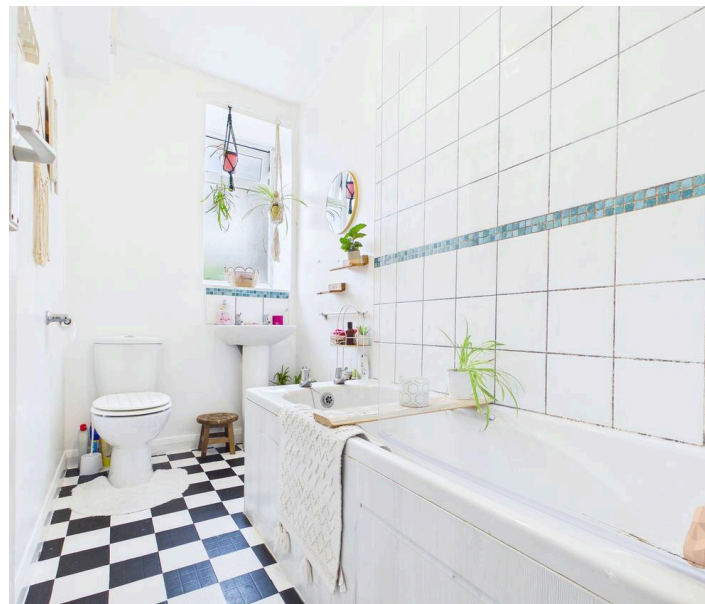
Hallway

3' 6" x 2' 10" (1.06m x 0.86m)

Bathroom

9' 0" x 4' 8" (2.75m x 1.43m)

A white suite comprising bath with shower over, wash hand basin and WC.



GARDEN

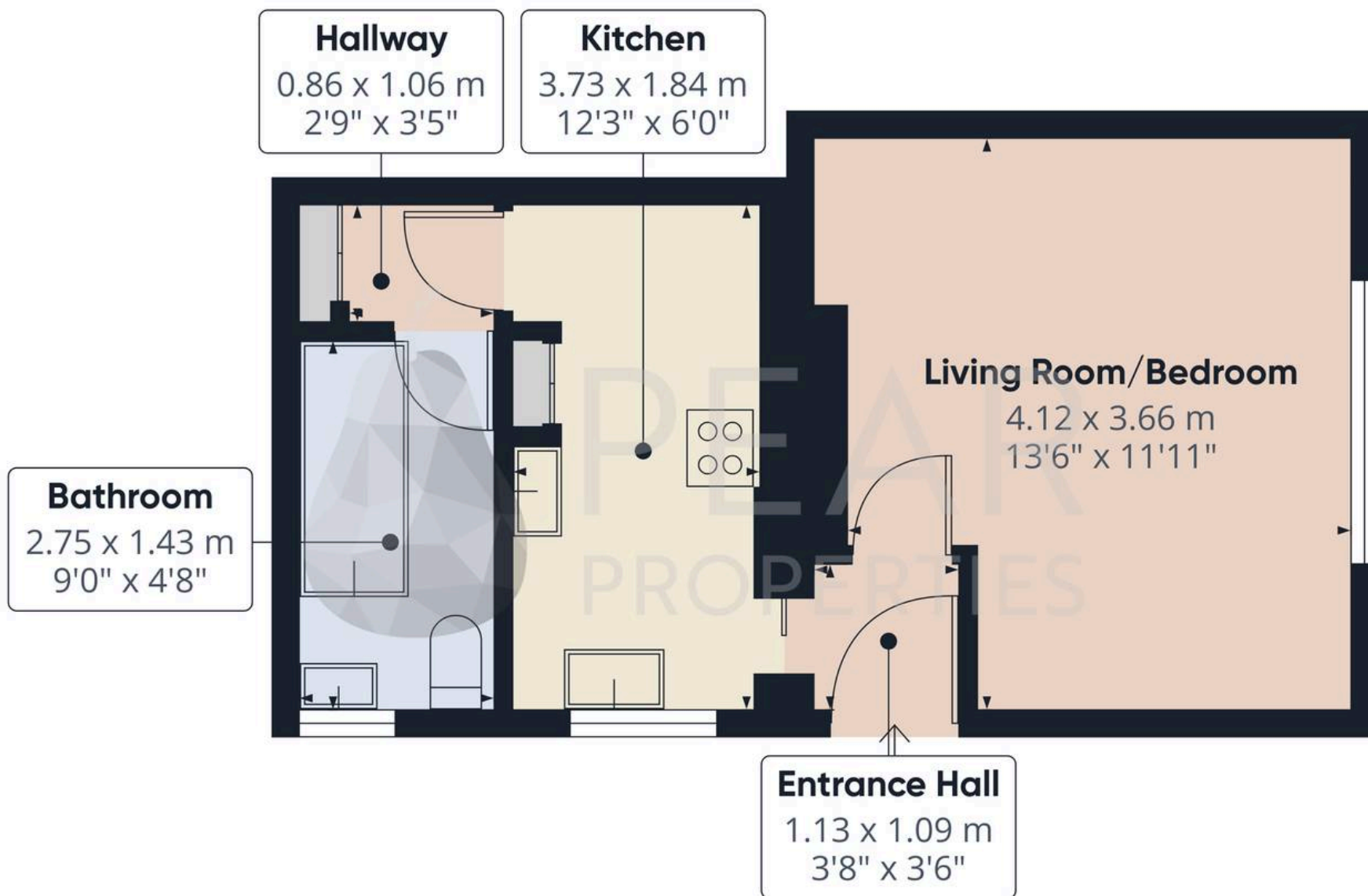
Private rear garden benefitting from being south facing with a range of trees and shrubs borders, shingle seating area and the rest being laid to lawn.

OFF STREET

1 Parking Space

Agreement to use parking space on the front drive.





Approximate total area⁽¹⁾

27.8 m²
299 ft²

(1) Excluding balconies and terraces

Calculations reference the RICS IPMS 3C standard. Measurements are approximate and not to scale. This floor plan is intended for illustration only.

GIRAFFE360





Pear Properties

20 Crabtree Lane, Lancing - BN15 9QP

01903 947337 · hello@pearproperties.uk · pearproperties.uk