



Christchurch Avenue, NW6

£299,950

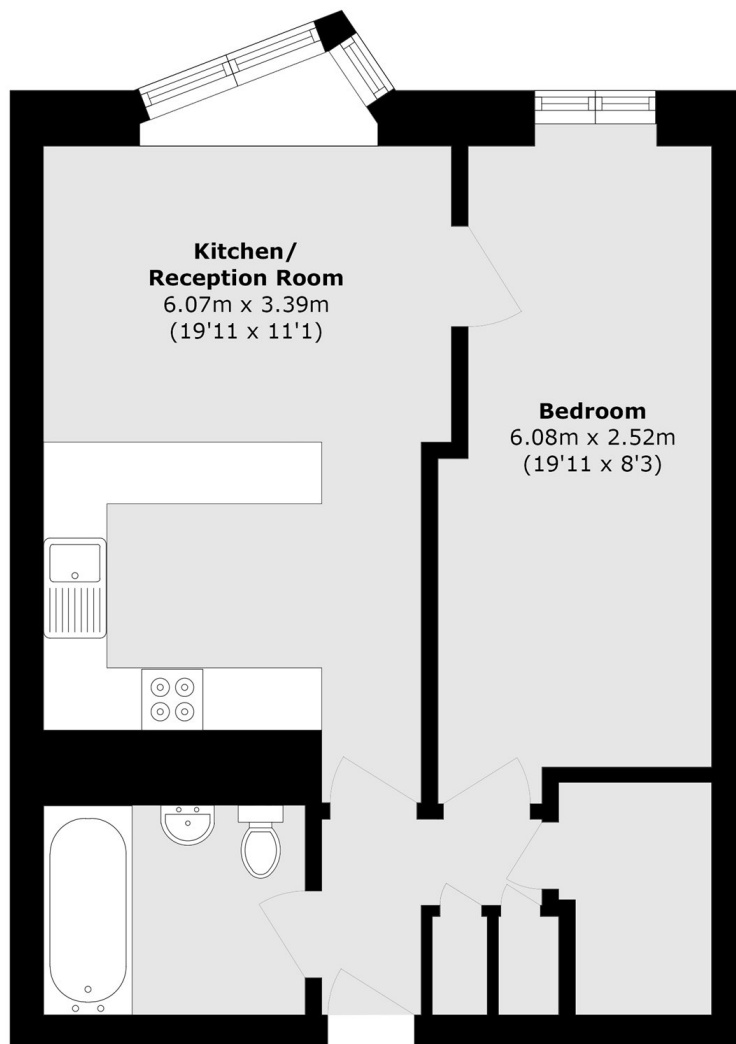
A fantastic opportunity to acquire a large one bedroom flat with gated off street parking and in recent decorative order. The property would make a great investment and will be sold with no onward chain.

Christchurch Avenue is located a short distance from the local shops and amenities of Kilburn High Road. The closest underground station is Kilburn (Jubilee line) and Brondesbury (Overground).

Features

- Off Street Parking
- One Bedroom
- Close To Stations
- First Floor
- Recently Decorated
- Chain Free

Christchurch Avenue, London, NW6



Total area (approx.): 48.4 sq. m (520.9 sq. ft)