



Floorplan

This floorplan is only for illustrative purposes and is not to scale. Measurements of rooms, doors, windows, and any items are approximate and no responsibility is taken for any error, omission or mis-statement. Icons of items such as bathroom suites are representations only and may not look like the real items. Made with Made Snappy 360.

Directions

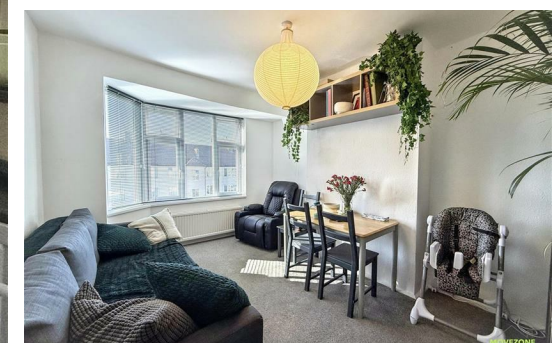
Contact

223 Southborough Lane
Bromley
Kent
BR2 8AT

E: info@movezone.co.uk

T: 0208 3139075

<https://www.movezone.co.uk>



**2 Bed
Flat
located in Chinbrook Road**



33 Robins Court Chinbrook Road London

£1,600 PCM



An excellent opportunity to rent this two double bedroom top floor flat, ideally located on Chinbrook Road, London, SE12. Offering bright and well proportioned accommodation, this property is perfect for professionals, couples or small families and is sure to let quickly, early viewing is highly recommended.

The accommodation comprises two good sized double bedrooms, a spacious separate lounge, a modern fitted kitchen, and a bathroom with bath. A unique feature of the property is access via an external stairway from the kitchen, providing additional convenience. Further benefits include residents' parking and well maintained communal gardens.

Situated in a convenient SE12 location, the property is within easy reach of local shops, cafés and amenities. Chinbrook Meadows is nearby, offering lovely green space, while Grove Park and Lee stations provide excellent transport links into Central London, making this an ideal home for commuters seeking both comfort and connectivity.

Council Tax Band: B
EPC Rating: C
Contingency Deposit: £1846.00

