



# Queens Gate Terrace, London SW7

Price £750 per week - Unfurnished







## Description

A superb lateral apartment with a patio area in this period building in the heart of South Kensington. The property consists of two double bedrooms, one bathroom, guest cloakroom, a large reception room, fully fitted kitchen and utility room. Further benefits include wooden flooring throughout and a small patio. Queen's Gate Terrace is ideally located minutes from the extensive shopping and transport facilities of Gloucester Road and South Kensington and the open spaces of Kensington Gardens.

Please note the apartment is offered on an unfurnished basis, the furniture shown in the photos is not included.

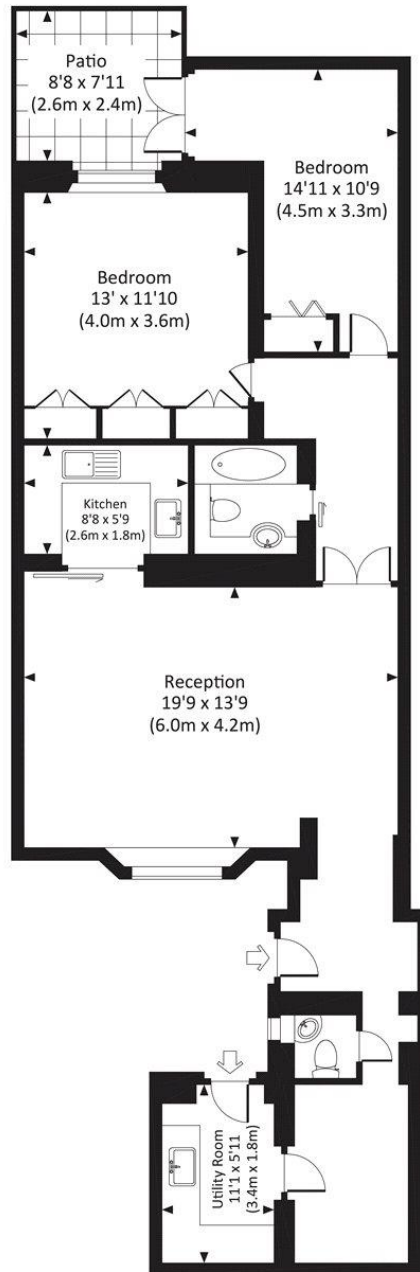
Council tax band: F. Rent is payable on a monthly basis, and you may be required to pay more than a month's rent in advance for tenancies with annual rents exceeding £100,000. You will be required to pay a 1 week holding deposit following a successful offer. Tenancies with annual rents up to £50,000 will require a 5 weeks' security deposit, while those exceeding this threshold will require a 6 weeks' deposit. Utility bills, council tax, telephone line and broadband are not included in the rent. As well as paying the rent, you may also be required to make some additional permitted payments. If your tenancy does not qualify as an APT, additional fees may apply. Please visit [jll.co.uk/fees](http://jll.co.uk/fees) for details of fees that may be payable when renting a property. To check broadband and mobile phone coverage please visit Ofcom here [ofcom.org.uk/phones-telecoms-and-internet/advice-for-consumers/advice/ofcom-checker](http://ofcom.org.uk/phones-telecoms-and-internet/advice-for-consumers/advice/ofcom-checker)

- 2 Double bedrooms
- 1 Bathroom
- Guest cloakroom
- Reception room
- Fully fitted kitchen
- Utility room
- Patio garden
- Approx. 964 sq ft (89 sq m)
- Unfurnished
- EPC: D

# Floorplan

964 sq ft | 90 sq m

Approx. gross internal area  
964 Sq.Ft. / 89.6 Sq.M.



LOWER GROUND FLOOR



All measurements have been made in accordance with RICS Code of Measuring Practice which are approximate only and only for illustrative purposes. For the avoidance of doubt, Dowling Jones Design shall not be liable for any reliance on these measurements. © 2015 www.dowlingjones.com 020 7610 9933

Chelsea  
2 Cale Street,  
London SW3 3QU  
+4420 7399 5010  
saleschelsea@jll.com

*Urban living, your way.*

[jll.co.uk/residential](http://jll.co.uk/residential)

© 2019 Jones Lang LaSalle IP, Inc. All rights reserved. All information contained herein is from sources deemed reliable; however, no representation or warranty is made to the accuracy thereof.

