



Canfield Gardens

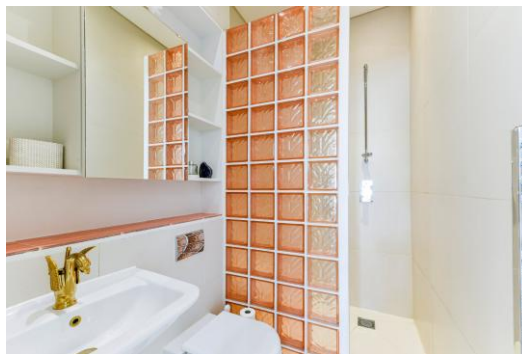
London, NW6

£8,450 per month
(£1,950 per week)

This first-floor apartment is located in prime South Hampstead, renovated to an exceptional standard. The property benefits from high ceilings, unique fixtures and fittings and natural light throughout. The reception room has wide sash windows which looks over the green gardens on Canfield Gardens. The eat in style family kitchen is stylish, special & sleek. Modern style cabinetry with quartz worktops and Siemens appliances, the dining side with a Carrara marble table paired with a curved velvet booth set this area apart from many.

The principal bedroom boasts a shower room and tonnes of wardrobe storage throughout. A second bedroom is also a great size which looks out onto the balcony and between both bedrooms is a separate study or bedroom where tall shuttered doors open to a private terrace. There is also a separate family bathroom which is located between the kitchen and reception room.

CHESTERTONS



Canfield Gardens

London, NW6

- Unique Style Renovation
- First Floor
- Spacious Reception Room
- Patio/Balcony
- 1227 SQFT



Minimum Term: 12 months
Deposit Required: £11,700.00
Local Authority: London Borough Of Camden
Council Tax Band: G
EPC Rating: B
Furnished, Part Furnished, Unfurnished

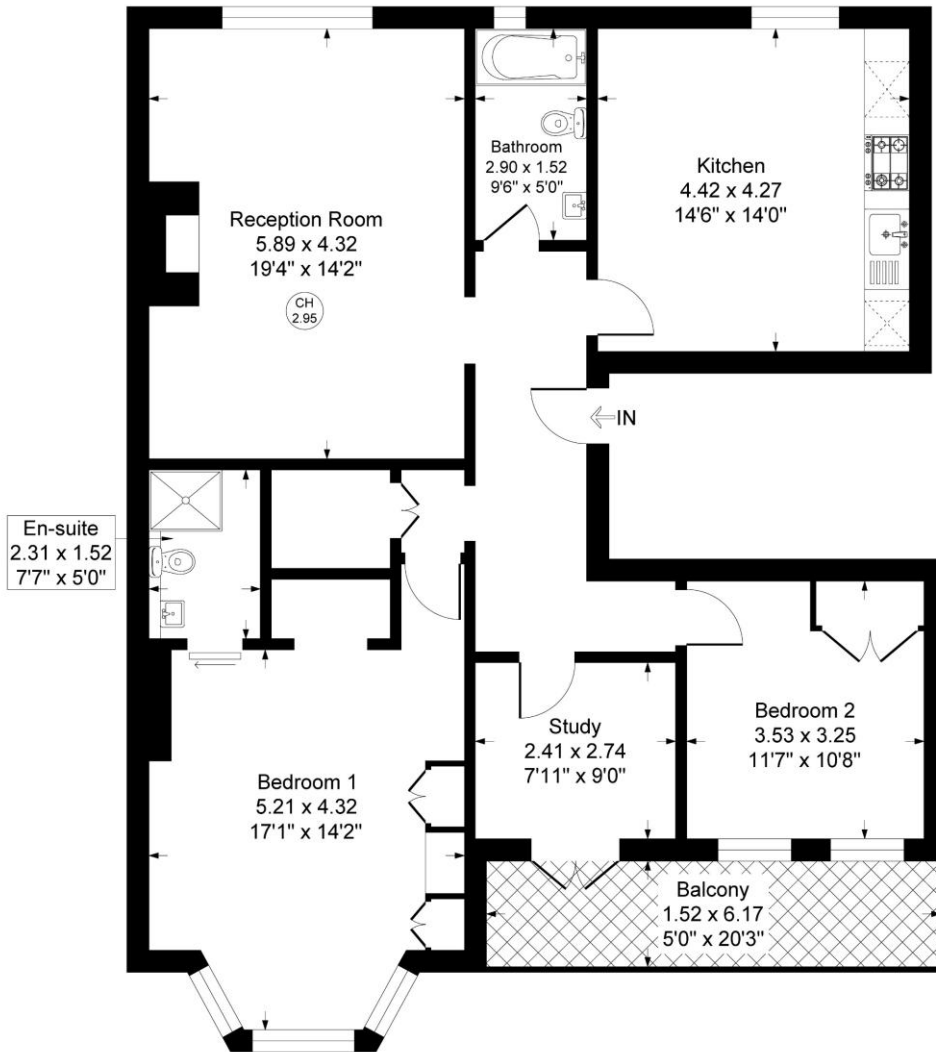
Score	Energy rating	Current	Potential
92+	A		
81-91	B	85 B	85 B
69-80	C		
55-68	D		
39-54	E		
21-38	F		
1-20	G		

Chestertons Hampstead Lettings

55-56 Hampstead High Street
Hampstead
London
NW3 1QH
hampsteadlettingsusers@chestertons.co.uk
02077941125
chestertons.co.uk

Additional tenant charges apply (fees apply to non-AST tenancies only)
Tenancy Agreement Fee: £300
References per Tenant/Guarantor: £60
Inventory check (approx. £100 – £250 inc. VAT)
chestertons.co.uk/property-to-rent/applicable-fees

Canfield Gardens, London, NW6
Approximate Gross Internal Floor Area = 114.0 sq m / 1227 sq ft



First Floor

Illustration for identification purposes only, measurements are approximate, not to scale.