

Sullivan Court, Peterborough Road, SW6

Fulham, London

 LAWSONRUTTER

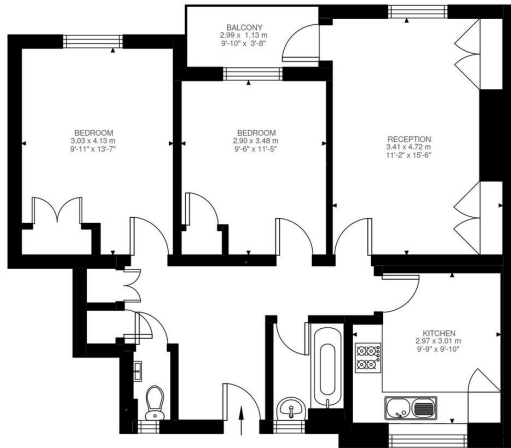




**Sullivan Court, Peterborough Road
London SW6**

**£425,000
Leasehold**

A well presented flat in this favoured estate, with two equal size double bedrooms, a private balcony and within a stone's throw to the excellent shops, bars and restaurants in Parsons Green. The block has recently been refurbished, including external redecoration, new front doors, a new lift and a new roof. The spacious accommodation comprises a generous reception room that opens onto the balcony which overlooks the well maintained communal gardens, a modern kitchen, a bathroom and a separate w/c. The flat also has good hallway storage and built in cupboards in both bedrooms. The estate offers parking on a low cost permit and there is bicycle storage too. Sullivan Court is within walking distance to Parsons Green underground station (District Line) as well as Hurlingham and South parks. The flat is offered with no onward chain, a lease of 170 years and would suit both a first time buyer and investor alike.



Second Floor
722 ft²

- * A WELL PRESENTED FLAT IN A FAVOURED LOCATION *
- TWO DOUBLE BEDROOMS * DOUBLE RECEPTION ROOM *
- * KITCHEN * BATHROOM & SEPARATE W/C * BALCONY *
- * WALKING DISTANCE TO THE EXCELLENT SHOPS, BARS & RESTAURANTS IN PARSONS GREEN *
- PARSONS GREEN UNDERGROUND STATION CLOSE BY (DISTRICT LINE) *
- *NO ONWARD CHAIN *
- * LONG LEASEHOLD *

All viewings by appointment through our **Fulham Office:**

T: 020 7731 3636
E: fulham@lawsonrutter.com

347 Fulham Palace Road, London SW6 6TB

Peterborough Road, SW6
Approximate Gross Internal Area
67.06 SQ.M / 722 SQ.FT

In accordance with the Property Misdescription Act 1991, we wish to emphasise that the information given in these particulars is intended to help you decide whether you wish to view this property. Whilst every care is taken to ensure the accuracy of these particulars please note that all measurements are approximate and we are, for the accuracy of other information, reliant on what the seller has provided. We strongly recommend that you rely on your own inspections and those of your advisors to establish the details of any aspects which are of particular importance. Please note that we have not undertaken any survey of the property or the appliances within it and the buyer must rely on their own

