



[www.jeffreygross.co.uk](http://www.jeffreygross.co.uk)

CARDIFF

VALE

CAERPHILLY

BRISTOL



*Filton Avenue*

HORFIELD



Comments by Ms Olivia Melville-Brown



**Property Specialist**  
Ms Olivia Melville-Brown  
Branch manager

[o.melvillebrown@thepropertyoutlet.com](mailto:o.melvillebrown@thepropertyoutlet.com)

Comments by the Homeowner



# Filton Avenue

Horfield, Bristol, BS7 0QH

PCM

£650 PCM



1 Bedroom(s)



1 Bathroom(s)



947.22 sq ft



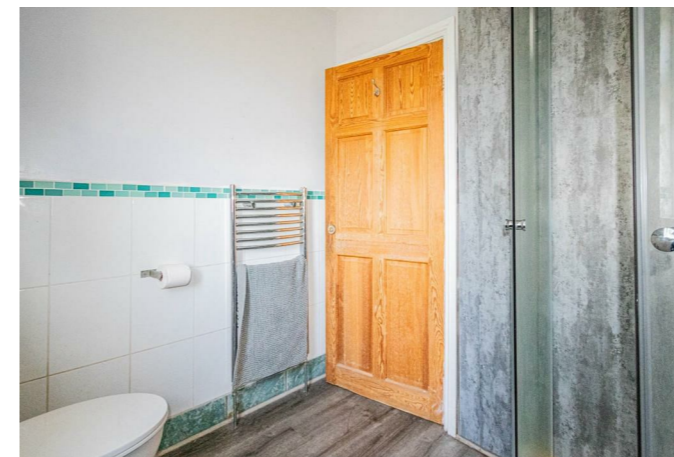
Contact our  
**Property Outlet Branch**

0117 935 4565

\* AVAILABLE 20.07.2026 \*

ROOM TO RENT in a four bedroom house - all bills included. Jeffrey Ross & The Property Outlet are delighted to offer this Furnished Double Room to the market, Suitable for a single professional. The room is located close to Southmead hospital, airbus, MOD and Rolls Royce and is close to local amenities, such as shops and bus routes. Areas for communal use include a fitted kitchen, Living/Dining Room. White goods include electric cooker/electric oven, fridge/freezer and a washing machine. Other benefits include double glazing, gas central heating and rear garden.

Holding Deposit £173.07





CARDIFF

VALE

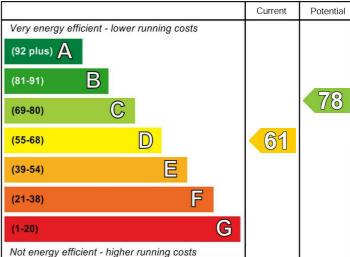
CAERPHILLY

BRISTOL

[www.jeffreygross.co.uk](http://www.jeffreygross.co.uk)



Energy Efficiency Rating



England & Wales EU Directive 2002/91/EC

