



challenger burgess

ESTATE AGENTS

Roath Road, Portishead, Bristol, BS20 6AW

Guide Price £375,000

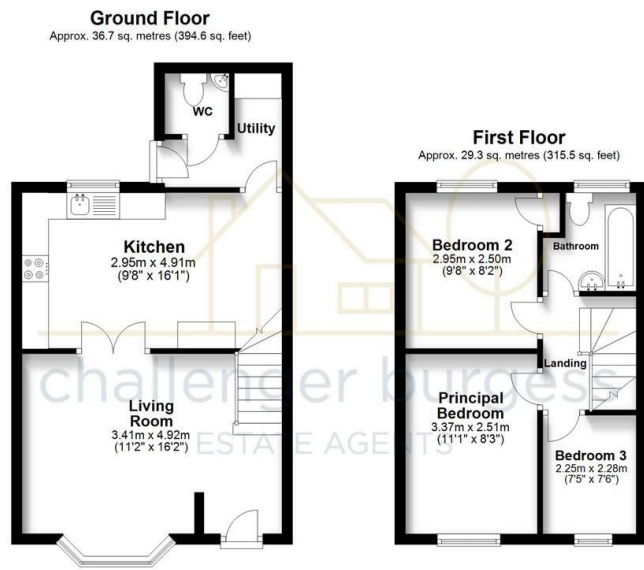
3 1 1



If you're wanting a period property full of character charm and within close proximity to the High Street, then this stone built home located on the desirable Roath Road offers this in abundance. This is a beautiful three bedroom semi-detached home, with view of St Peters Church and within catchment to both St Peters Primary & Gordano Secondary schools.

In brief the property comprises; entrance stepping into the open living room with bay window, through to the kitchen / breakfast room which is fitted with a range of base, drawer, larder and wall units. A door leads you through to the utility room and cloakroom with door to the rear garden. Rising up the spindle staircase you will find three bedrooms and the re-fitted family bathroom completing the internal of the home. Externally, a private rear garden laid is predominantly to lawn with a patio area, raised borders and the view of St Peters Church, the front of the property can be accessed down the side where it is raised. Steps lead you up to the front of this charming property.





Total area: approx. 66.0 sq. metres (710.1 sq. feet)



- Stunning Property
- Utility and Cloakroom
- Three Bedrooms
- Open Plan Living
- Freehold
- Semi Detached
- Re-Fitted Kitchen
- Re-Fitted Family Bathroom
- Walking Distance to Portishead High Street
- Council Tax Band C

Score	Energy rating	Current	Potential
92+	A		
81-91	B		90 B
69-80	C	77 C	
55-68	D		
39-54	E		
21-38	F		
1-20	G		