
BROMPTON SQUARE

CHELSEA SW3





A MAGNIFICENT GEORGIAN HOUSE SITUATED AT THE END OF A TERRACE BORDERING THE BROMPTON ROAD IN ONE OF KNIGHTSBRIDGE'S PREMIER GARDEN SQUARES.

This house has been in the same ownership since the square was developed (c. 1823) and that must be something very special in today's world.



ACCOMMODATION

- Principal bedroom with a walk-in dressing area and en-suite bathroom
- 4/5 further bedrooms
- 1 bathroom
- 1 shower room
- Cloakroom
- 3/4 reception rooms
- Study
- Kitchen
- Utility room
- Rear terrace at first floor
- Garden/patio
- Access to Square
- Gardens via a separate arrangement





Tenure: Freehold

Local Authority: Royal Borough of Kensington and Chelsea

Council Tax: Band H

EPC: Rating C

Guide Price: £5,250,000

Approximate Gross Internal Area
2,988 sq ft / 277.68 sq m
excluding vaults, including 1.8 sq m of
under 1.5m area

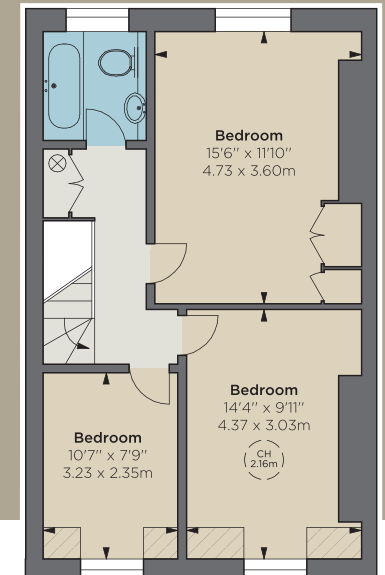
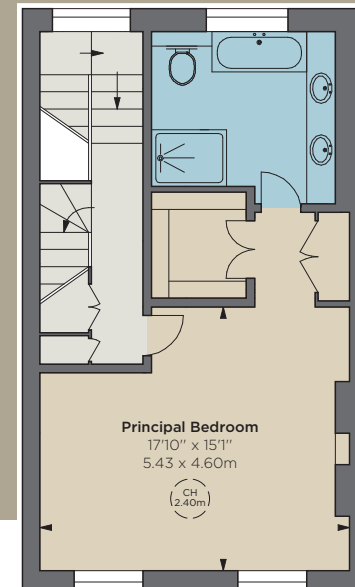
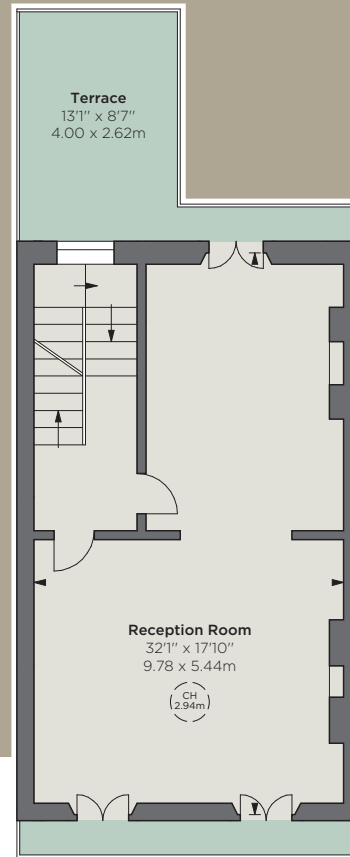
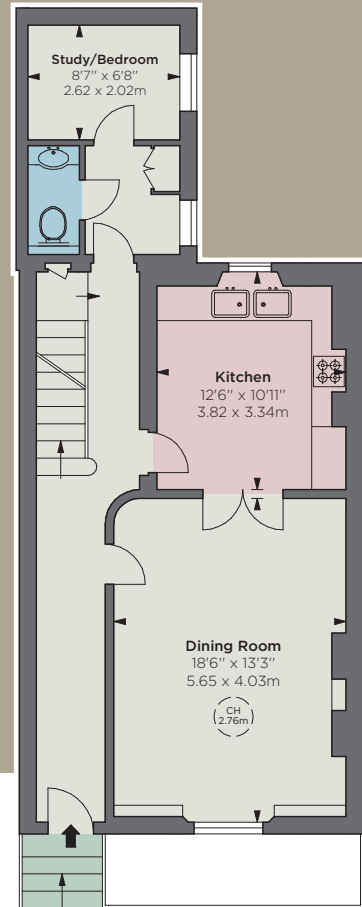
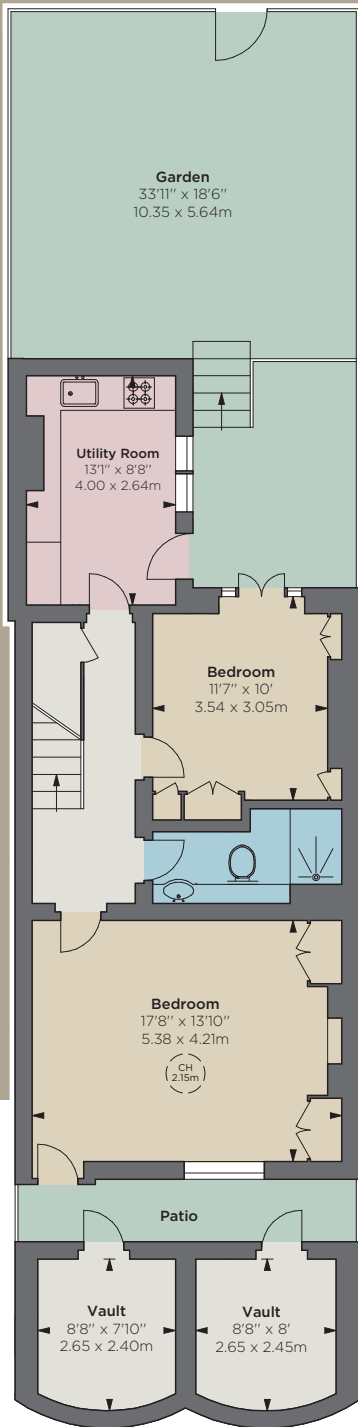
Approximate Vaults Area
144 sq ft / 13.47 sq m

Total Approximate Gross Internal Area
3,133 sq ft / 291.15 sq m

 Hatched Area: Under 1.5m
CH: Ceiling height

Floorplan for guidance only, not to scale or for valuations purposes. It must not be relied upon as a statement of fact. All measurements and areas are approximate and have been prepared in accordance with the current edition of the RICS Code of Measuring Practice.

© Alex Winship Photography Ltd.



THE BROCHURE ALEX WINSHIP

Lower Ground Floor

Raised Ground Floor

First Floor

Second Floor

Third Floor

These particulars are for general information only and do not constitute any part of an offer or contract. All statements contained therein are made without responsibility on the part of the vendors or lessors and are not to be relied upon as statement or representation of fact. Intending purchasers or lessees must satisfy themselves, by inspection, or otherwise, as to the correctness of each of the statements or dimensions contained in these particulars. This floorplan is for guidance only and not for valuation purposes. 29/04/26 JLL-260421-03-GG

JLL Chelsea
2 Cale Street
London SW3 3QU
020 7399 5010



jll.co.uk