



Randolph Avenue

Little Venice, W9

Asking Price £3,100,000

Set on Randolph Avenue, in central Little Venice, is this spectacular garden Maisonette with a west facing aspect from the garden and with direct access onto the wonderful Triangle Amenity communal garden.

Spanning approximately 1570 square feet and flooded with natural light, the owner has conscientiously refurbished the property and created the most spectacular family home. The accommodation comprises a bright west facing reception room with direct access onto a wonderful 756 square foot private patio with the communal garden beyond, a second reception room serving as a dining room, a separate fully fitted kitchen also offering direct access to the garden. The master bedroom has plentiful storage and an en suite bathroom, two further double bedrooms which are served by a family bathroom as well as a separate cloakroom.

Randolph Avenue is situated close to the local amenities of Little Venice including the boutique shops, cafes on Clifton Road and Formosa Street, the Regent's Canal, and Warwick Avenue Underground station (Bakerloo Line).

CHESTERTONS



Randolph Avenue

Little Venice, W9

- A stunning 3 bedroom garden maisonette spanning approx. 1570 square feet.
- Benefitting from a stunning west facing patio garden with direct access onto the Triangle communal garden.
- Finished to the most spectacular standard throughout.
- Positioned in central Little Venice.



Tenure: Share of Freehold 954 years 1 months

Service Charge: £4800 approx

Ground Rent: £0

Local Authority: Westminster

Council Tax Band: G

Chestertons Little Venice Sales

26 Clifton Road

Maida Vale

London

W9 1SX

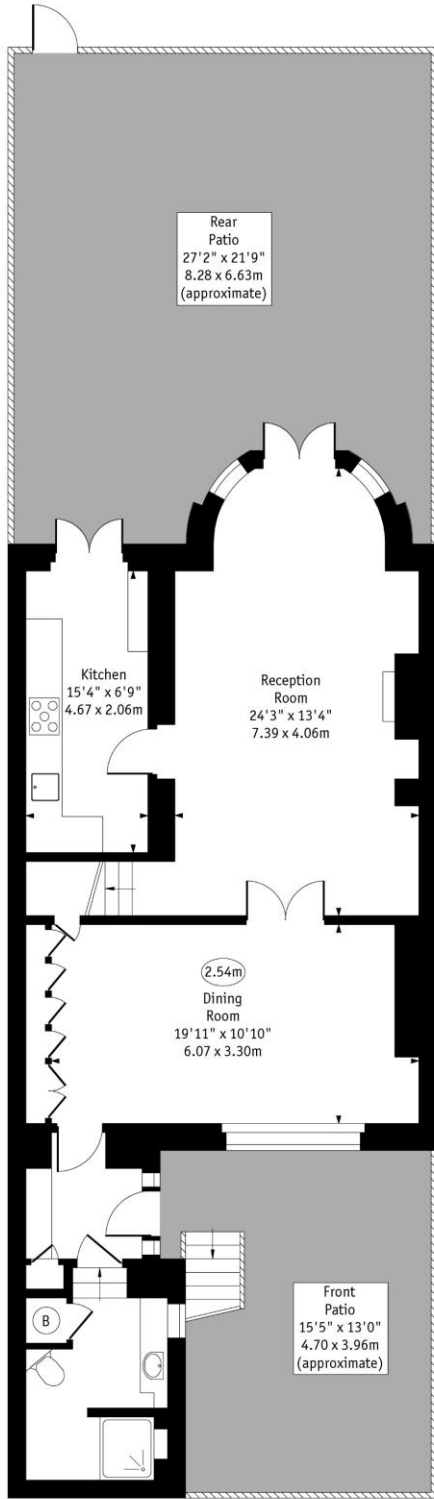
littlevenice@chestertons.co.uk

020 7286 4632

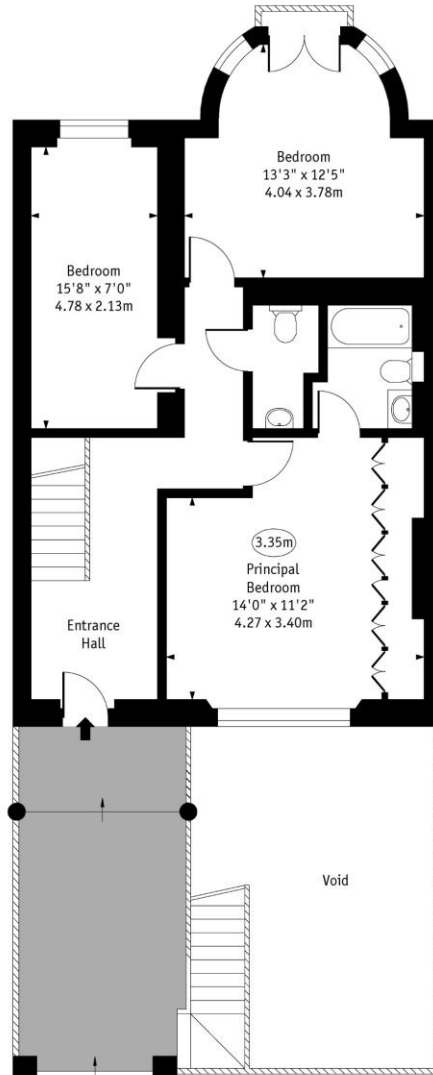
chestertons.co.uk

Randolph Avenue, W9

○ - Ceiling Height



Lower Ground Floor



Ground Floor

Approx Gross Internal Area 1570 Sq Ft - 145.85 Sq M

Every attempt has been made to ensure the accuracy of the floor plan shown. However, all measurements, fixtures, fittings, and data shown are approximate interpretations and for illustrative purposes only. Measured according to the RICS IPMS 2. Not To Scale. www.goldlens.co.uk Ref. No. 030997EH

