



Swaffham Road, Dereham, NR19 2BA

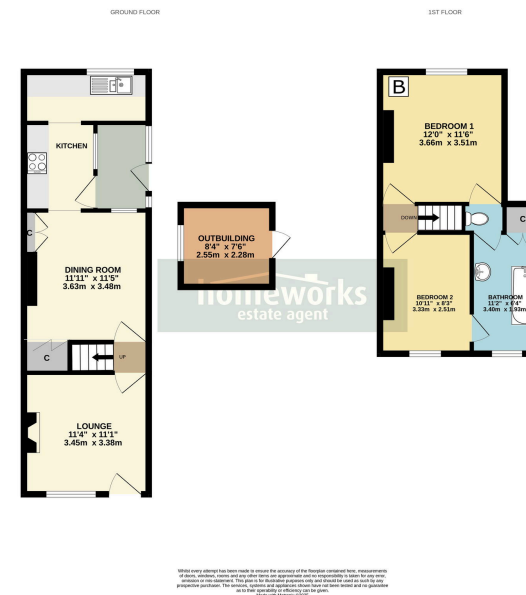
Guide Price £125,000

🛏 2 🚿 1 🛋 1

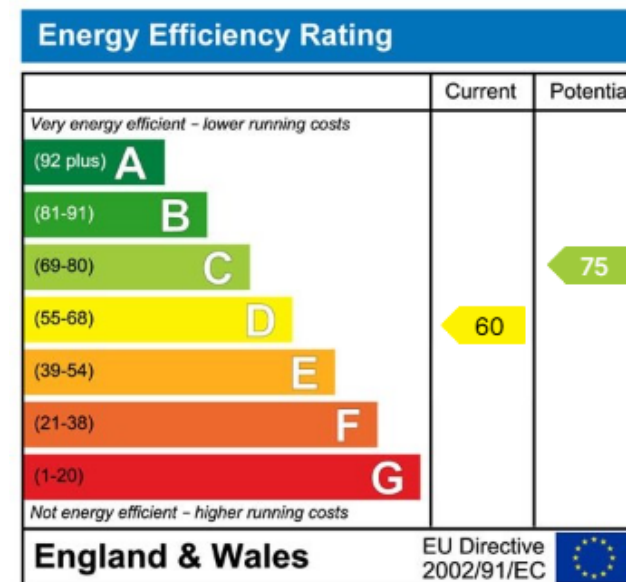


- TWO DOUBLE BEDROOM TERRACED COTTAGE WITH NO CHAIN
- 11'4 LOUNGE
- IN NEED OF UPDATING
- 11'11 DINING ROOM
- KITCHEN
- FAMILY BATHROOM
- ENCLOSED REAR GARDEN
- A STONES THROW FROM DEREHAM TOWN CENTRE
- £125,000-£150,000
- IDEAL FIRST TIME BUY OR INVESTMENT





* NO ONWARD CHAIN * THIS TWO DOUBLE BEDROOM COTTAGE IS IN NEED OF UPDATING BUT PRESENTS A GREAT OPPORTUNITY, WITH 11'4 LOUNGE | 11'11 SEPARATE DINING ROOM | KITCHEN | FAMILY BATHROOM | ENCLOSED REAR GARDEN | JUST A STONES THROW AWAY FROM THE TOWN CENTRE | £125,000-£150,000



C AMOS MNAEA Managing Director
VAT no. 185 328 683

