



3 Jardin Du Hocq

La Rue Du Hocq

3 Jardin Du Hocq, La Rue Du Hocq, St Clement, JE2 6LF

Built circa 2019, this beautifully presented two bedroom apartment forms part of a well built and thoughtfully designed development, offering stylish modern living in an enviable coastal location, just moments from the beach.

Benefiting from both east and west facing balconies, the property enjoys sunlight throughout the day — from morning coffee on the master bedroom balcony to evening sunsets from the main living space.

The accommodation comprises a spacious open plan kitchen/lounge/diner, creating a bright and sociable living area with doors opening directly onto the west facing balcony. There are two well-proportioned bedrooms, including a principal bedroom with its own private east facing balcony. Both bedrooms benefit from fitted wardrobes, while the apartment also features a contemporary house bathroom and a useful utility cupboard housing a washing machine and dryer.

Externally, the property further benefits from an allocated parking space and a separate store cupboard, providing excellent additional storage.

The development itself is perfectly suited for both families and those seeking a relaxed coastal lifestyle, with beautifully maintained communal green areas ideal for relaxing or allowing children to play safely. A footpath to the rear of the development leads directly into the meadow behind the parish hall, offering wonderful countryside walks and convenient access through to Le Hocq beach and restaurant.

A fantastic opportunity to acquire a modern apartment within a high-quality coastal development in a highly desirable beach side setting.



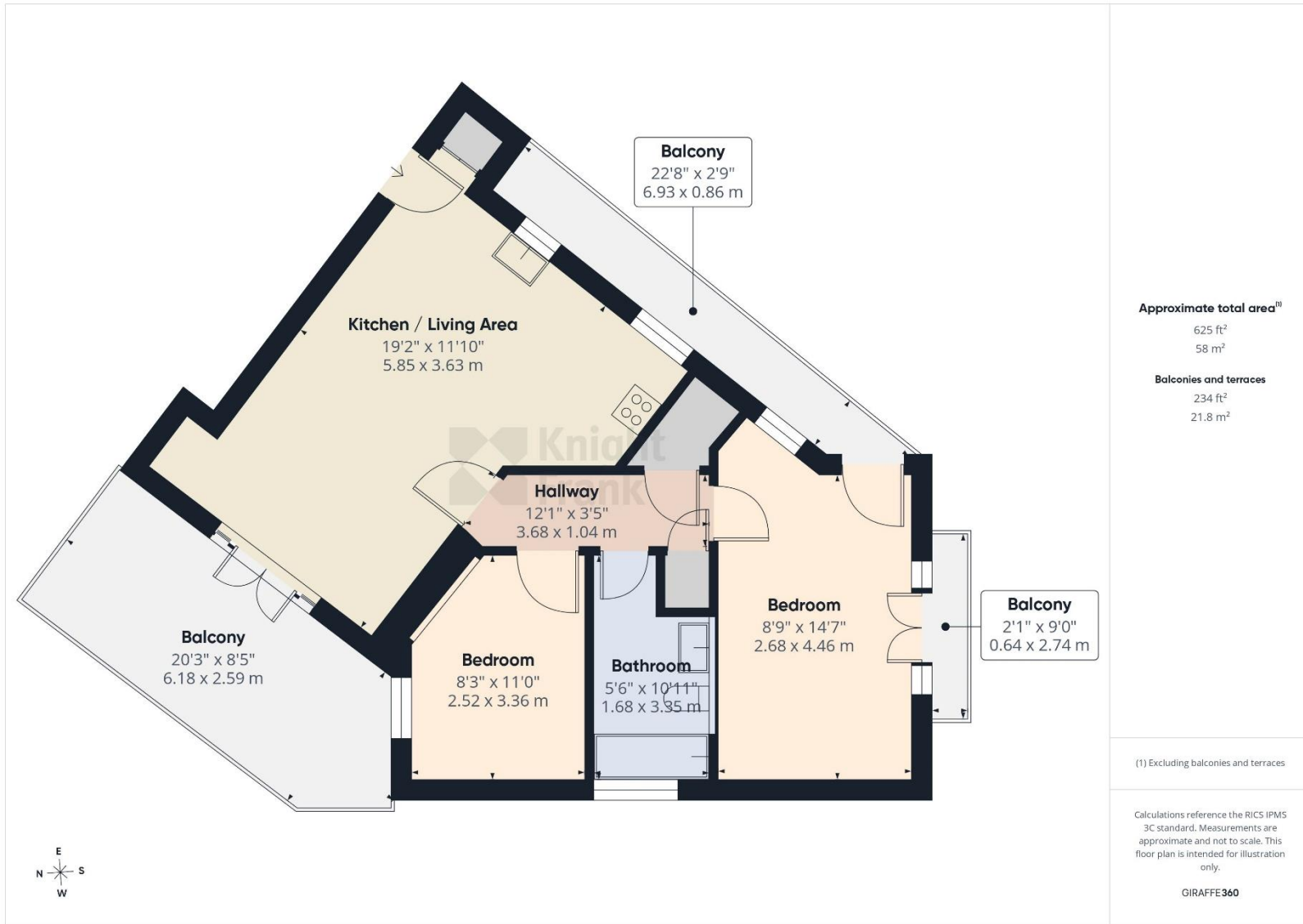
Parish: St Clement

Qualification: Qualified

Tenure: Share Transfer

Price £575,000

- Modern two bedroom apartment
- High quality coastal development
- Parking space and store cupboard
- East and west facing balconies
- Open plan living
- No onward chain



This plan is for layout guidance only. Not drawn to scale unless stated. Windows and door openings are approximate. Whilst every care is taken in the preparation of this plan, please check all dimensions, shapes and compass bearings before making any decisions reliant upon them.

Service Charge

£172.50 pcm (includes rates)

Services

Electric under floor heating throughout

All mains, except gas

+441534 877977

Knight Frank Jersey

37-39 Halkett Place St Helier, Jersey JE2 4WG

knightfrank.je

Your partners in property

1. Particulars: These particulars are not an offer or contract, nor part of one. You should not rely on statements given by Knight Frank Jersey in the particulars, by word of mouth or in writing (“information”) as being factually accurate about the property, its condition or its value. Neither Knight Frank Jersey nor any joint agent has any authority to make any representations about the property, and accordingly any information given is entirely without responsibility on the part of Knight Frank Jersey. 2. Material Information: Please note that the material information is provided to Knight Frank Jersey by third parties and is provided here as a guide only. While Knight Frank Jersey has taken steps to verify this information, we advise you to confirm the details of any such material information prior to any offer being submitted. If we are informed of changes to this information by the seller or another third party, we will use reasonable endeavours to update this as soon as practical. 3. Photos, Videos etc: The photographs, property videos and virtual viewings etc. show only certain parts of the property as they appeared at the time they were taken. Areas, measurements and distances given are approximate only. 4. Regulations etc: Any reference to alterations to, or use of, any part of the property does not mean that any necessary planning, building regulations or other consent has been obtained. A buyer must find out by inspection or in other ways that these matters have been properly dealt with and that all information is correct. 5. Fixtures and fittings: A list of the fitted carpets, curtains, light fittings and other items fixed to the property which are included in the sale (or may be available by separate negotiation) will be provided by the Seller’s Lawyer. Particulars dated 11/06/2026. All information is correct at the time of going to print.

