

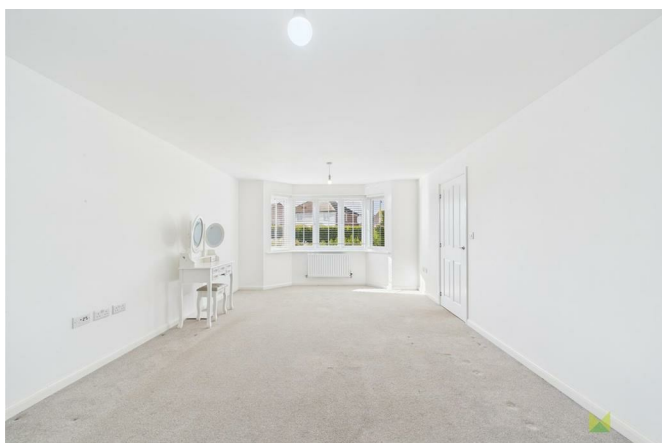
2 Pewit Close Bowbrook Shrewsbury SY5 8QH



5 Bedroom House - Detached
£1,900 PCM

The features

- GAS CENTRAL HEATING AND DOUBLE GLAZING
- LIVING ROOM
- KITCHEN/DINING ROOM
- PRINCIPAL BEDROOM WITH ENSUITE
- GARAGE, DRIVEWAY PARKING AND REAR GARDEN
- ENTRANCE HALL
- STUDY AND CLOAK ROOM
- UTILITY ROOM
- FOUR FURTHER BEDROOMS AND FAMILY BATHROOM
- EPC RATING B



****5 BEDROOM DETACHED HOME****

A recently built five bedroom Detached family home which occupies an enviable position on this sought after development. Ideally placed for access to the Royal Shrewsbury Hospital, A5/M54 motorway network, Shops, Schools and the Town Centre. The accommodation briefly comprises of; Entrance Hall, Living Room, Study, Kitchen/Dining Room, Utility Room. Principal Bedroom with En Suite, four further bedrooms, family bathroom. Garage, rear garden and driveway parking.

Property details

ENTRANCE HALL

With carpet, radiator

STUDY

With carpet, window to front aspect, radiator

LIVING ROOM

With carpet, window to front aspect, radiator

UTILITY/CLOAKROOM

With wood effect tiled flooring, base units with work surface over, plumbing for washing machine, low level WC, pedestal wash hand basin, radiator, obscured window to rear aspect

KITCHEN/DINING ROOM

With a range of shaker style units with wood effect work surface over, integrated oven & gas hob, dish washer, fridge freezer, double sink and drainer set in base units. Window to rear aspect, double doors leading to OUTSIDE

STAIRS AND LANDING

With carpet

PRINCIPAL BEDROOM

With carpet, window to front aspect, fitted double wardrobe along with further single wardrobe, radiator

EN SUITE

With three piece suite to include; low level WC, pedestal wash hand basin, shower cubicle, obscured window to side aspect

BEDROOM 2

With carpet, window to front aspect, radiator

BEDROOM 3

With carpet, window to rear aspect, radiator

BEDROOM 4

With carpets, window to rear aspect, radiator

BEDROOM 5

With carpet, window to rear aspect, radiator

FAMILY BATHROOM

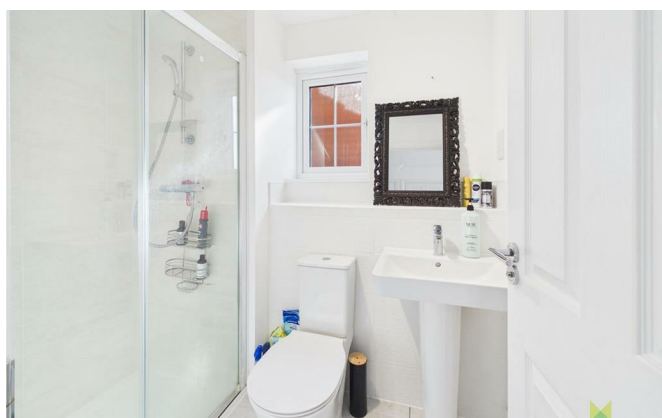
With 3 piece suite to include; low level WC, pedestal wash hand basin, panelled bath with shower over. Complimentary tiling, wall mounted heated towel rail, obscured window to side aspect

GARDEN AND OUTDOORS

The property boasts driveway parking for 2/3 cars. The rear garden is primarily laid to lawn with a small paved area enclosed with wooden fencing. Garage with lights and electric sockets.

2 Pewit Close, Bowbrook, Shrewsbury, SY5 8QH.

5 Bedroom House - Detached
£1,900 PCM





Floor 0



Floor 1

Approximate total area[®]
1461 ft²
135.7 m²

(1) Excluding balconies and terraces

Calculations reference the RICS IPMS 3C standard. Measurements are approximate and not to scale. This floor plan is intended for illustration only.

GIRAFFE360



Judy Bourne

Director at Monks
judy@monks.co.uk

Get in touch

Call. 01743 361422
Email. info@monks.co.uk
Click. www.monks.co.uk

Shrewsbury office

10a-11 Shoplatch,
Shrewsbury, Shropshire, SY1

We're available 7 days a week

HOME – four words that define who,
and what we are:

Honest, Original, Motivated, Empathetic

Energy Efficiency Rating		
	Current	Potential
Very energy efficient - lower running costs		
(92 plus) A		94
(81-91) B	86	
(69-80) C		
(55-68) D		
(39-54) E		
(21-38) F		
(1-20) G		
Not energy efficient - higher running costs		
England & Wales	EU Directive 2002/91/EC	

Environmental Impact (CO ₂) Rating		
	Current	Potential
Very environmentally friendly - lower CO ₂ emissions		
(92 plus) A		
(81-91) B		
(69-80) C		
(55-68) D		
(39-54) E		
(21-38) F		
(1-20) G		
Not environmentally friendly - higher CO ₂ emissions		
England & Wales	EU Directive 2002/91/EC	

Monks for themselves and for the vendors of this property, whose agents they are give notice that:

- These particulars provide a general outline only for the guidance of intended purchasers and do not constitute part of an offer or contract.
- All descriptions, dimensions and distances are approximate, references to state and condition, relevant permissions for use and occupation and other details are provided in good faith and believed to be correct.
- No person in the employment of Monks has any authority to make or give any representation or warranty whatever in relation to this property.
- Electrics and other appliances mentioned in these particulars have not been tested by Monks. Therefore prospective purchasers must satisfy themselves as to their working order.