



SIMPLE LIFE



SIMPLE LIFE



Brookfield Drive, Bradford, BD10

£1,150 PCM

Located immediately next to the Eccleshill Pool & Leisure Centre, Sainsbury's Supermarket, and Matalan store, the site is less than 5 miles to Leeds Bradford Airport with close proximity to Bradford, Leeds, Huddersfield, Harrogate and Wakefield.

Walking into the Tyne you are immediately greeted by a light and spacious open plan kitchen, dining and living area. With French windows directly out to your private back garden, the property allows for functional cooking space as well as an excellent entertaining area.

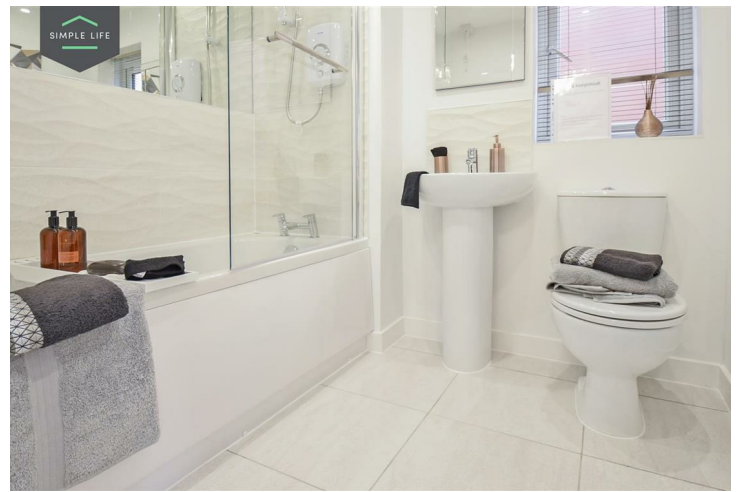
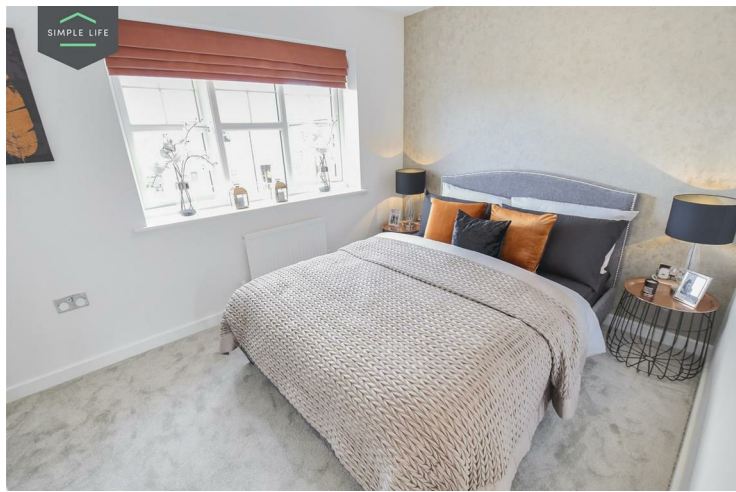
Upstairs there is a family bathroom and two good sized double bedrooms, one of which comes with a storage cupboard perfect to keep linen, clothes and belongings tidy.

The development benefits from being within 3 miles of 60 'Good' or 'Outstanding' primary and secondary schools and colleges, with Holybrook Primary School just 5 minutes' walk away. Less than 2 miles from the city centre, there is access to the new Broadway shopping centre and diverse high street.

SatNav postcode BD10 0EH will bring you onto Romanby Shaw, with the development sited immediately east of the leisure centre.

Deposit: £1320
Unfurnished
Council tax: B
Available 20th January 2026





Key Features

- Car Parking Space
- Dishwasher
- Washing/drying machine
- Carpets up the stairs and in the bedrooms
- Blinds in the bedrooms
- Security Alarm
- Fridge-freezer
- Modern kitchen worktops and units
- Private back garden

Location

