



Roding Lane South, Ilford, IG4 5PD

£2,700 Per Calendar Month





£2,700 Per Calendar Month

# Roding Lane South

Iford, IG4 5PD

- Three Bedrooms
- Private Garden
- Walking Distance to Redbridge Central Line Station
- Separate Kitchen
- Redbridge Primary & Beal School Catchment

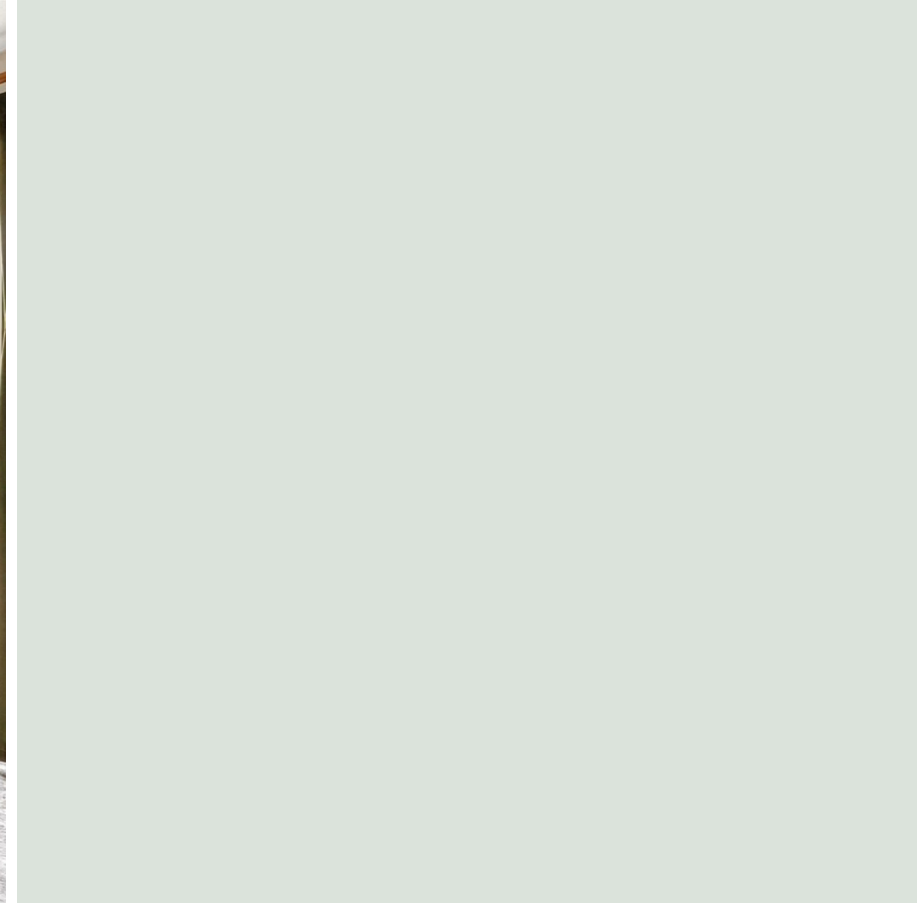
A three bedroom end of terrace family home on the popular Roding Lane South.

Upon entering, the ground floor boasts two spacious reception rooms, a separate fitted kitchen that leads out onto the garden.

Upstairs, are three well-proportioned bedrooms and a family bathroom with separate WC.

This home is ideally situated for easy access to local amenities, Redbridge Central Line Station, and various transportation links. Moreover, the property falls within the catchment areas of the esteemed Redbridge Primary and Beal School.





Directions

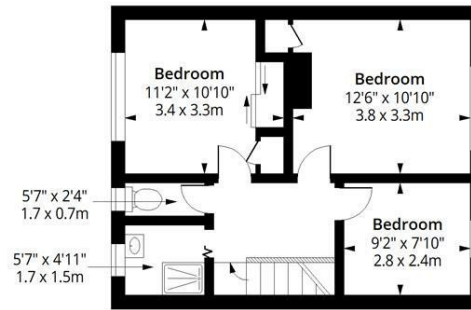
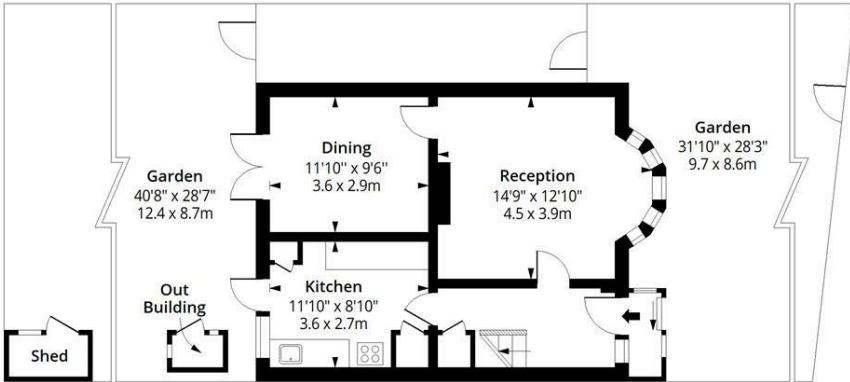




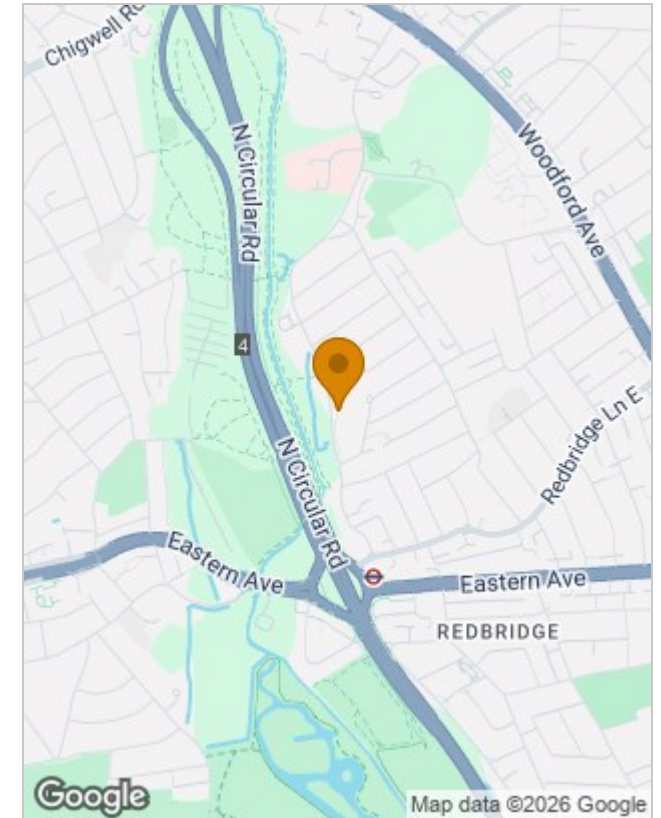
## Floor Plans

### Roding Lane South IG4

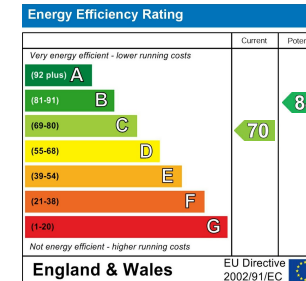
Approx. Gross Internal Area 965 Sq Ft - 89.65 Sq M  
 Approx. Gross Shed/ Out Building Area 26 Sq Ft - 2.42 Sq M



## Location Map



## Energy Performance Graph



## Viewing

Please contact our Redbridge Lettings Office on 020 8551 0211 if you wish to arrange a viewing appointment for this property or require further information.

The particulars are set out as a general outline only for the guidance of intended purchasers or lessees, and do not constitute, any part of a contract. Nothing in these particulars shall be deemed to be a statement that the property is in good structural condition or otherwise nor that any of the services, appliances, equipment or facilities are in good working order. Purchasers should satisfy themselves of this prior to purchasing.

10 Roding Lane South, Essex, IG4 5NX  
 Tel: 020 8551 0211 Email: redbridge@sandradavidson.com <https://www.sandradavidson.com>



Measured according to RICS IPMS2. Floor plan is for illustrative purposes only and is not to scale. Every attempt has been made to ensure the accuracy of the floor plan shown, however all measurements, fixtures, fittings and data shown are an approximate interpretation for illustrative purposes only. 1 sq m = 10.76 sq feet. Date: 10/6/2026

ipaplus.com