



## Windmill Road, W5

£576 Per week

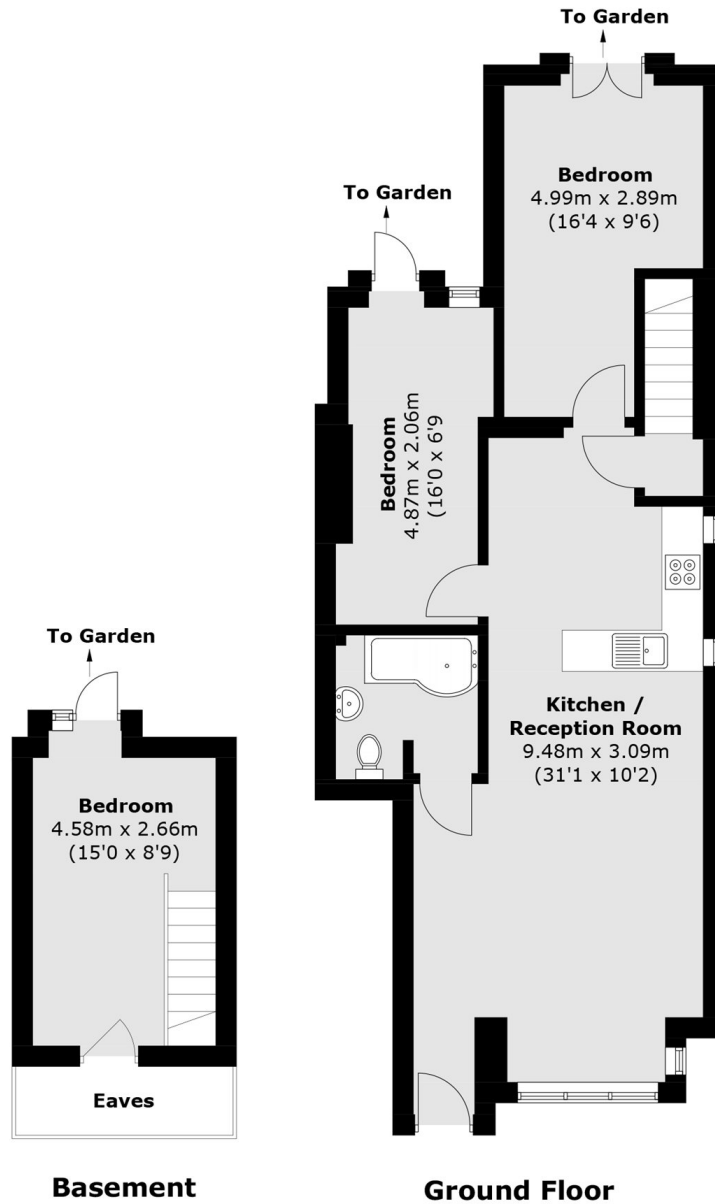
This three bedroom ground floor flat is arranged over split levels, including a basement and offers a spacious reception room, a modern kitchen and well-proportioned bedrooms. It is ideal for professional sharers or a family.

Windmill Road offers easy access to the M4 and is within half a mile from Northfields tube station on the Piccadilly line and all the amenities.

### Features

- Three Bedrooms
- Open Plan Kitchen/Living area
- Wood Floors Throughout
- Close to Tube
- Split Level
- Private Garden

# Windmill Road, London, W5



Total area (approx.): 76.6 sq. m (824.5 sq. ft)  
(Excluding Eaves)