



MADEIRA ROAD, SW16

£295,000

- Victorian conversion
- One double bedroom
- Allocated parking
- Central location
- Off-street parking
- Energy rating: E





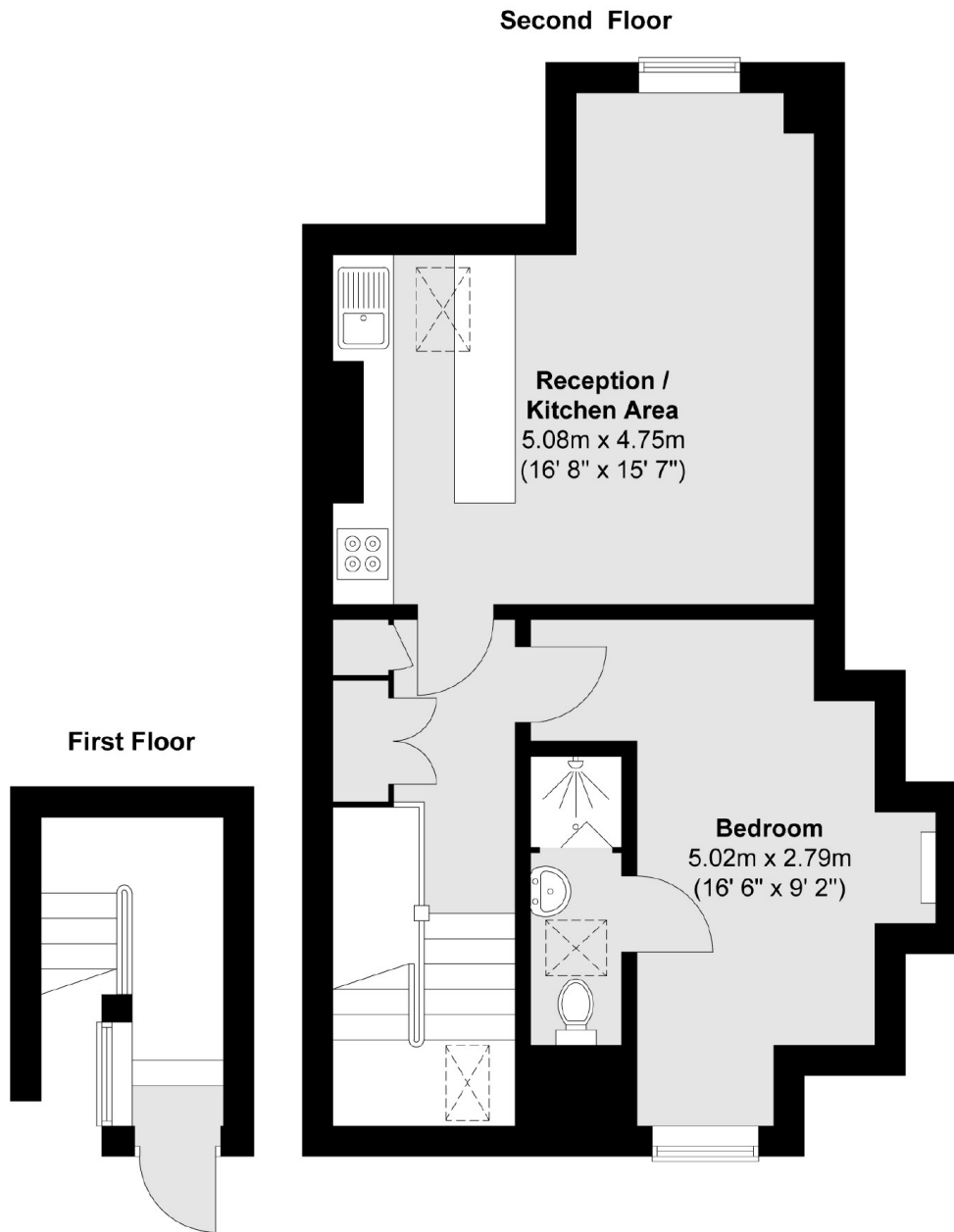
ABOUT THE HOME

A spacious top floor one bedroom conversion flat presented in good condition throughout.

Madeira Road is a popular road in central Streatham near to where continuing development has seen the opening of multiple amenities including; Brickwood Coffee and Marks & Spencer Foodhall. Transport includes; Thames link at Streatham Station and numerous buses on the high road, lead to central London via Brixton.







Total area (approx.) : 50.4 sq. m (542 sq. ft)

JACKSONS STREATHAM

1-3 De Montfort Parade,
Streatham High Road,
Sales: 020 8487 3179
Lettings: 020 8487 3180

Energy Rating: E We aim to make our particulars both accurate and reliable. However they are not guaranteed; nor do they form part of an offer or contract. If you require clarification on any points then please contact us, especially if you're traveling some distance to view. Please note that appliances and heating systems have not been tested and therefore no warranties can be given as to their good working order.