

Boardwalk

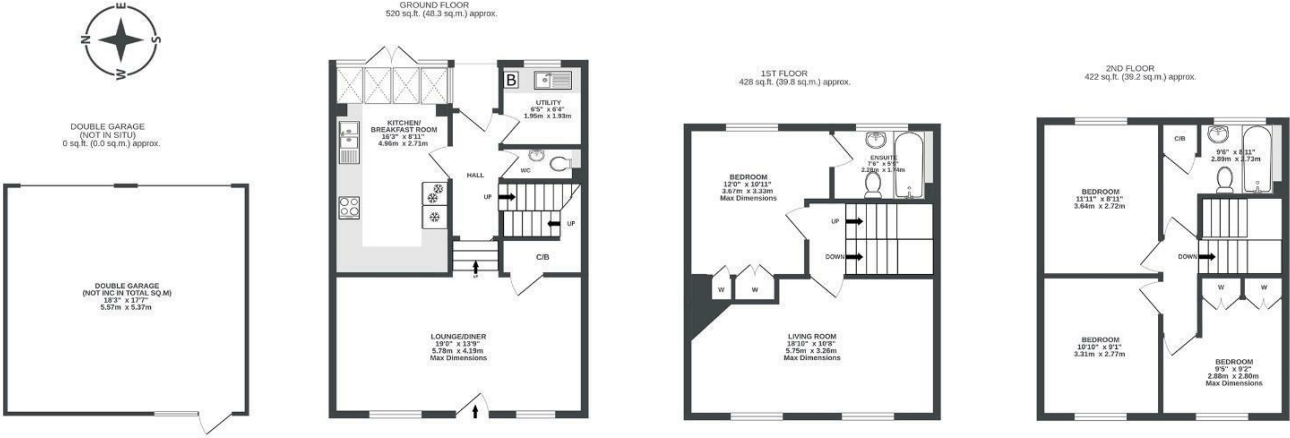
Wapping Road

, BRISTOL

Wapping Road

WAPPING WHARF

APPROXIMATE FLOOR AREA
127.3 SQM / 1370 SQFT



Illustrations are for reference purposes only, measurements are approximate, not to scale.



Boardwalk

Wapping Road , BRISTOL

£

£690,000



BS1 4RH

zzz

4 Bedrooms



3 Bathrooms

"I love the short walk to work and having a wander into town every weekend to browse and check out what's going on. Being able to meet friends who've popped to the centre or to the pub at a moments notice is great too and everything feels so walkable from here. The walk around the harbourside is a particular favourite of ours. Having a double garage at this location feels super lucky and convenient. We also love how quiet it feels despite being so central - you wouldn't know you were!"

