



**Strathleven Road, Brixton, SW2**

3 bedroom house for sale

**£695,000**

Freehold

## Property Details

Unique and rarely available, this three bedroom Victorian half-house is located in a highly sought-after residential pocket equidistant between central Brixton and Clapham High Street. Offering almost 900 square feet of well-appointed space, the property is arranged to maximise both functionality and character. A charming reception room with original floorboards and a feature fireplace sits at the front, while a generous dining room to the rear provides excellent entertaining space. The adjoining kitchen offers modern cabinetry and direct access to the garden, with potential to extend subject to permissions. The private garden is low maintenance, ideal for al fresco dining, and includes a useful shed. All three bedrooms are arranged over the upper floors. The principal bedroom is bright and spacious, a further large bedroom occupies the top floor with skylights and eaves storage, and a versatile third bedroom sits alongside a contemporary family bathroom.

## Features

- Rarely available Victorian half-house
- Three bedrooms
- Private garden
- Charming features
- Potential to extend STNP
- Local eateries, supermarkets and bars in moments
- Both Brixton and Clapham in under ten minutes
- Abbeville Village a ten-minute stroll
- Victoria and Northern Lines
- Freehold. Chain-free

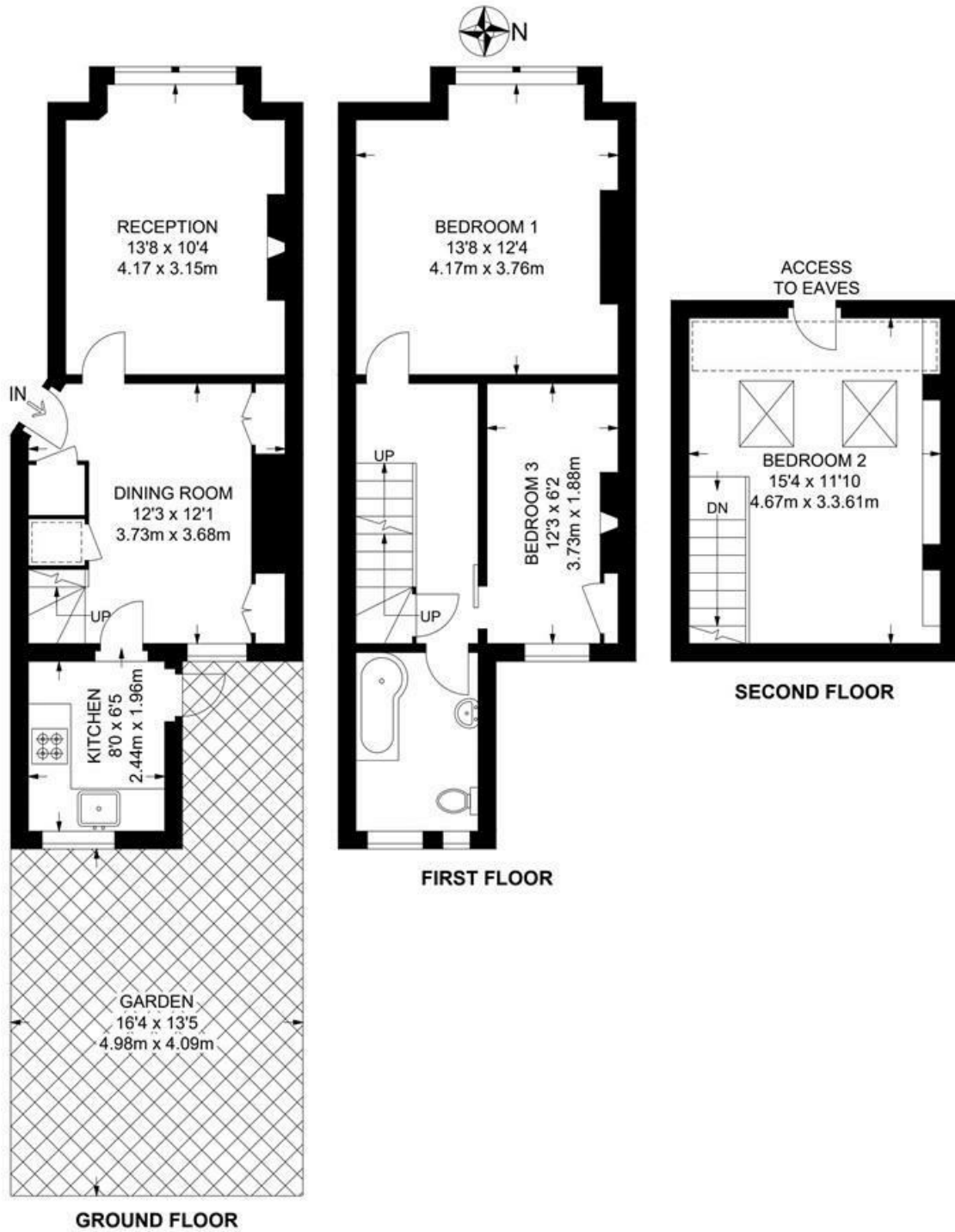
Council tax band D    EPC rating D (58)



Strathleven Road, Brixton, SW2

**Strathleven Road, SW2**  
**3 Bedroom House**

APPROXIMATE GROSS INTERNAL AREA: 889 SQ FT / 82.6 SQ M



While we try our very best, floor plans are produced as a guide only and we take no responsibility for the precise accuracy with which any property is represented.

Strathleven Road, Brixton, SW2

