

30 Ranelagh Gardens
Mansions Ranelagh
Gardens
London



30 Ranelagh Gardens

Mansions Ranelagh Gardens

£2,600 PCM
Full Description

The flat is well presented and features an open-plan living area, spacious master bedroom with good storage and en-suite bathroom, second bedroom with fitted wardrobes and a separate shower room. The flat also opens directly onto to a south-facing communal patio area.

Ranelagh Gardens is nestled between New King's Road and the river in Fulham, with its range of cafes, convenience stores, Putney Bridge station and bus terminal. A broader range of shops and restaurants can be found a short stroll away in Putney High Steet.

All measurements have been taken as a guide to prospective tenants only, and are not precise. Photographs are provided for general information, and it cannot be inferred that any item shown is included in any letting. Some images have been virtually staged to better showcase the true potential of rooms. If you require clarification or further information on any points, please contact us, especially if you are traveling some distance to view.

Local Authority

London Borough of Hammersmith and Fulham

Council Tax Band D

EPC Rating D



Contact

0208 994 5164

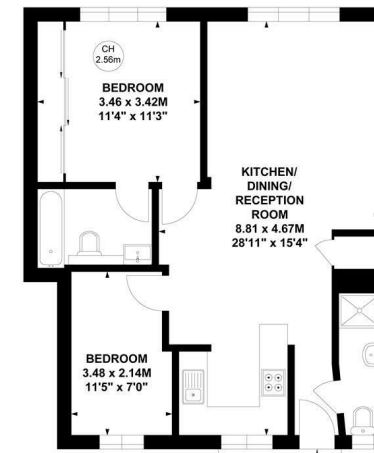
karen@xppm.co.uk

xppm.co.uk

Ranelagh Gardens Mansions, SW6

Approximate gross internal area
61.67 sq m / 664 sq ft

Key:
CH - Ceiling Height



Ground Floor

Not to scale, for guidance only and must not be relied upon as a statement of fact.
All measurements and areas are approximate only