



## North Road, SW19

**£2,100** Per calendar month

This two double bedroom house is set over 3 floors is nestled back from the main road, situated in a quiet mews style development. The property further boasts a private garden and off-street parking.

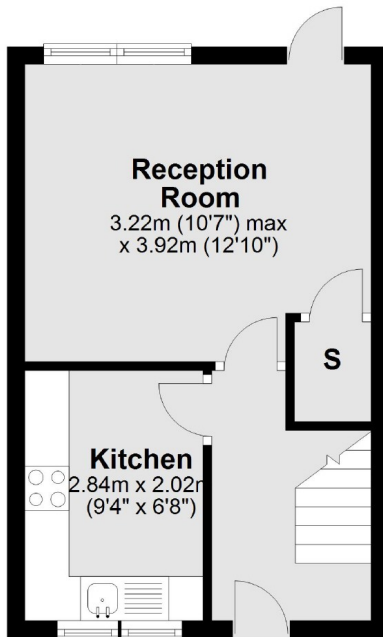
North Road is ideally located for Haydons Road rail station and South Wimbledon tube station whilst allowing good access to Wimbledon Mainline station, Wimbledon Village & Wimbledon Park.

### Features

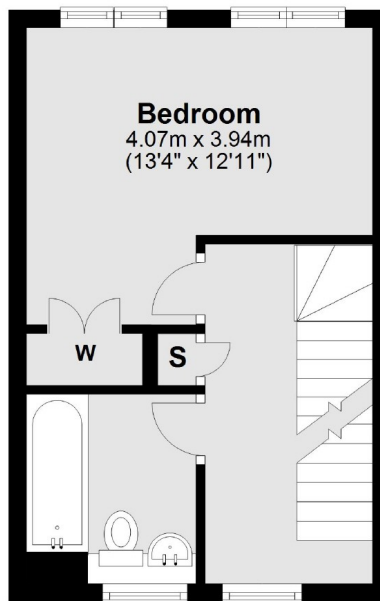
- Two Double Bedrooms
- Three Floors
- Private Garden
- Separate Kitchen
- Parking
- Close to Transport

# North Road, London, SW19

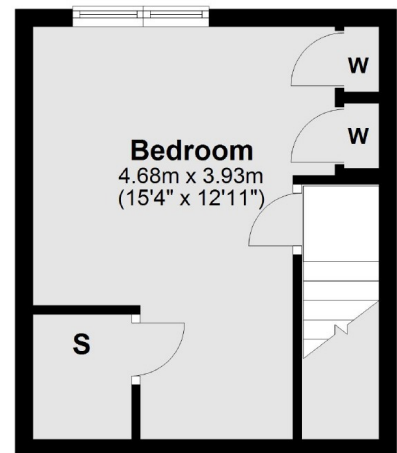
**Ground Floor**



**First Floor**



**Second Floor**



Total area: approx. 68.0 sq. metres (731.7 sq. feet)