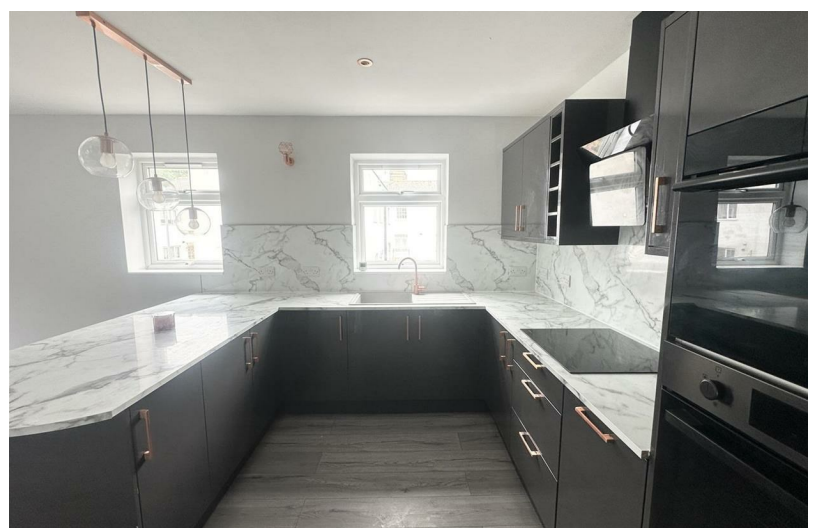
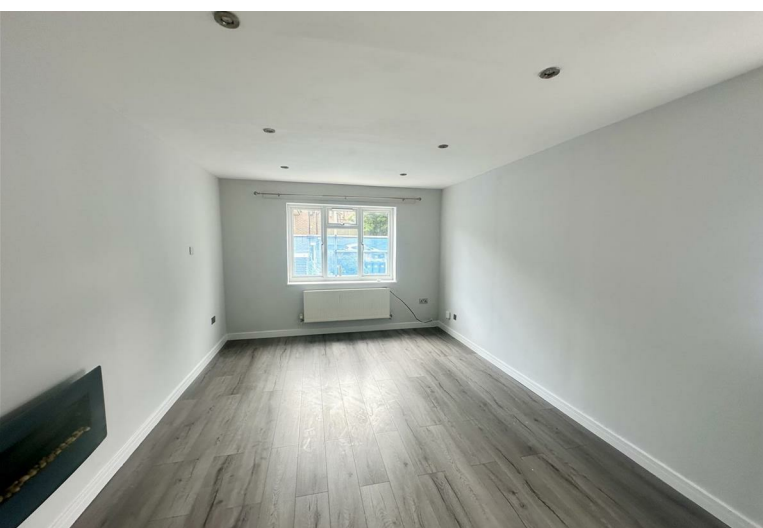


2  
BED

# Spacious 2 Bedroom Flat - communal garden

18, Rectory Close, Newhaven, BN9 9HL



£1,250 Per Calendar Month

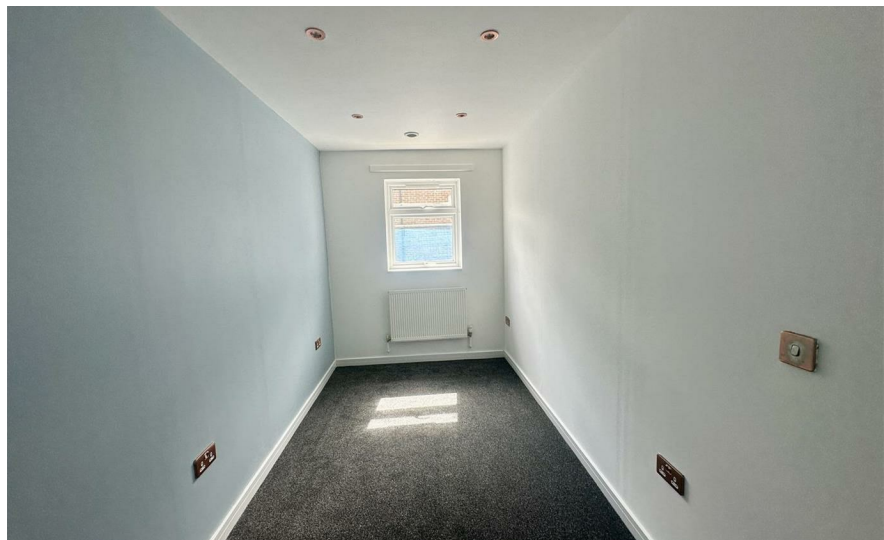
**phillipmann**  
we do more

[www.phillipmann.com](http://www.phillipmann.com)



## inbrief...

Spacious 2 Bedroom Flat situated in a favoured location close to local shops and within easy reach of bus routes etc. Accommodation comprises Communal Entrance, Flat Front Door, Spacious Open Plan Lounge/Kitchen with good range of wall and base units/working surfaces, intergrated fridge/freezer, slim line dishwasher, good size Lounge area with large window, 2 Bedroom both being spacious, main bedroom with built-in wardrobes, Modern Bathroom suite. Access to communal garden. Must be Viewed. Unfurnished.



## moreinfo...

Phillip Mann Lettings Office  
16 Bridge Street, Newhaven, East Sussex, BN9 9PJ  
01273 517 517



To see more details on this & all our homes go to  
[www.phillipmann.com](http://www.phillipmann.com)